

# Parts manual

## Genesis 3





Page 02-05

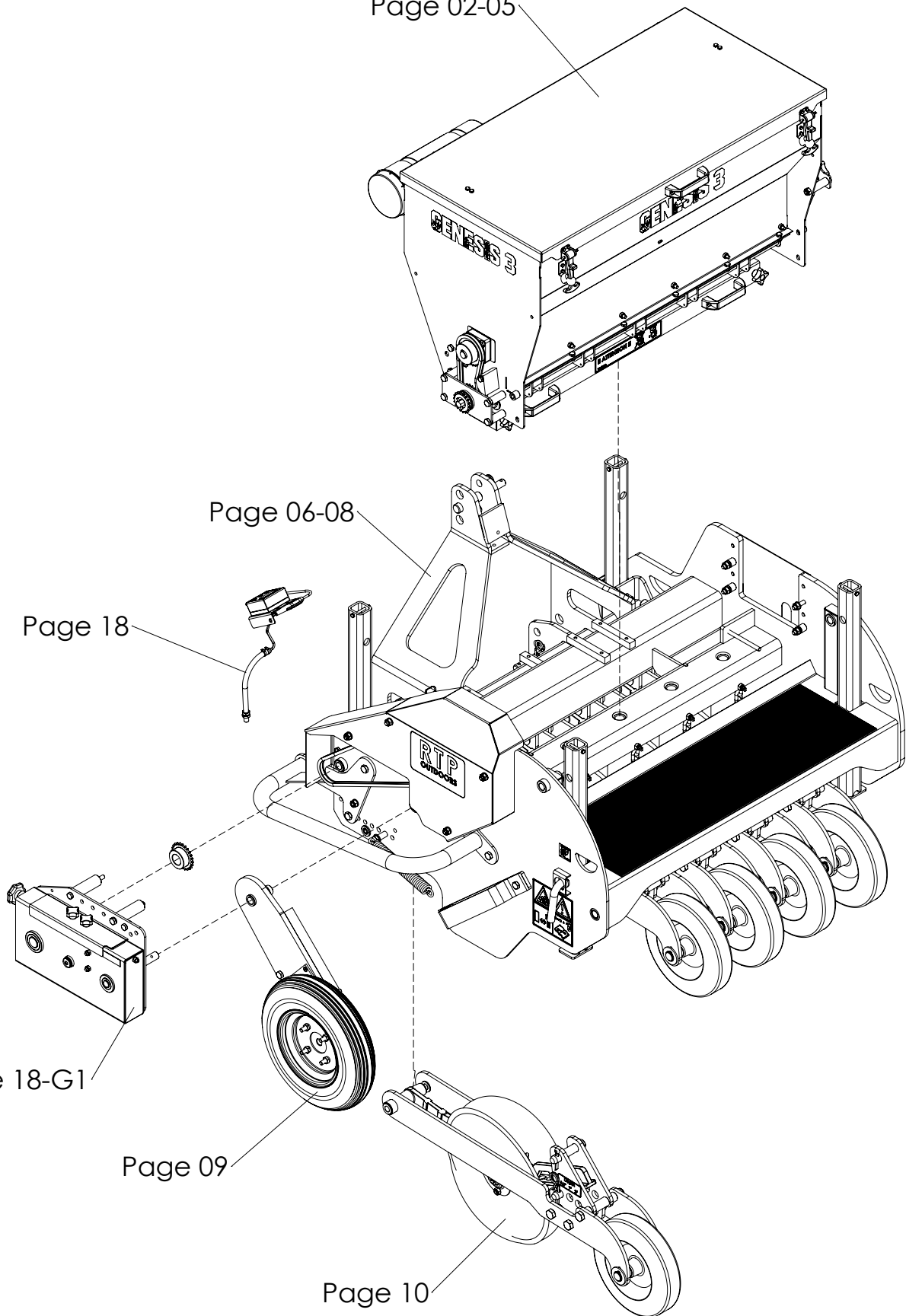
Page 06-08

Page 18

Page 18-G1

Page 09

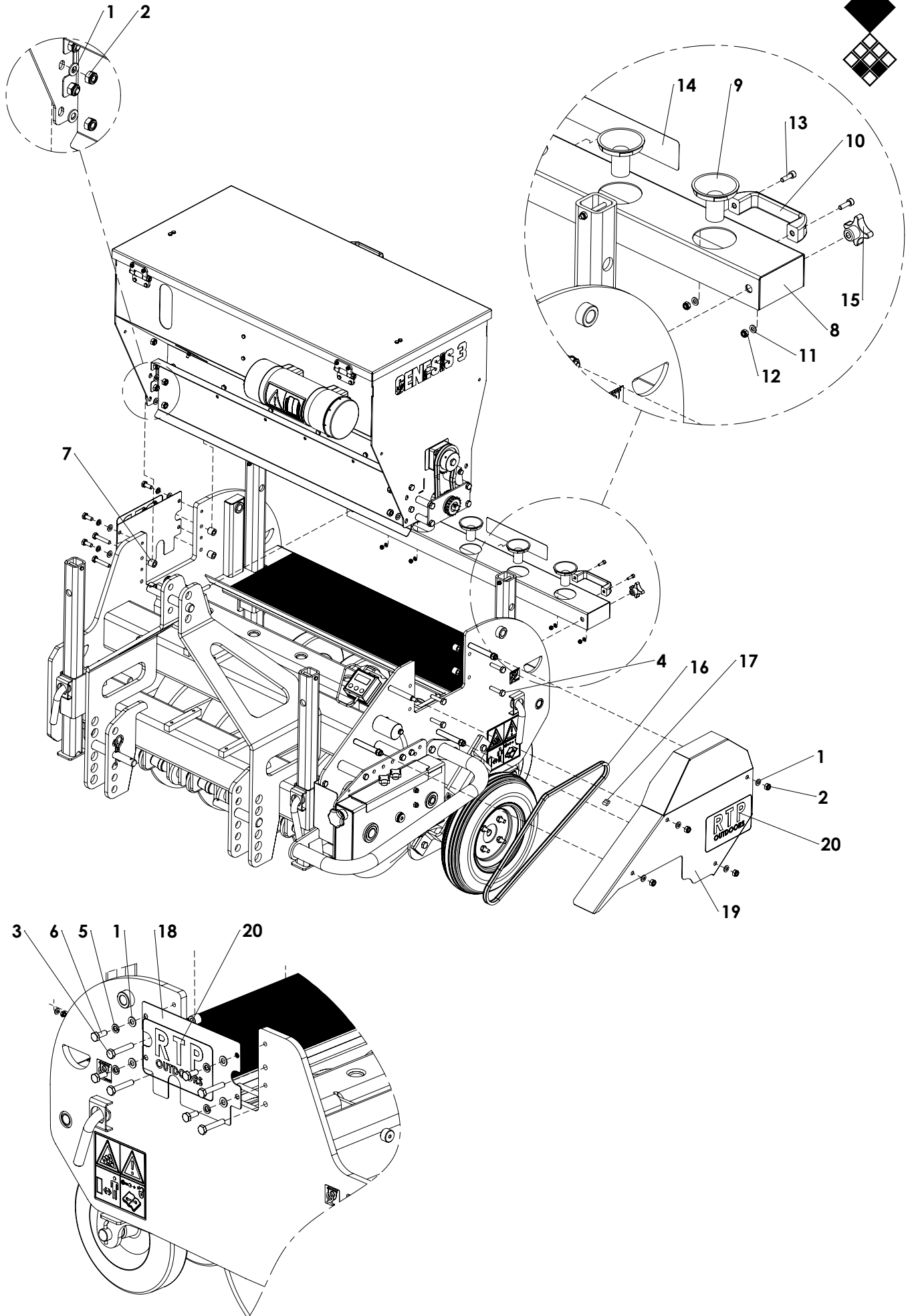
Page 10



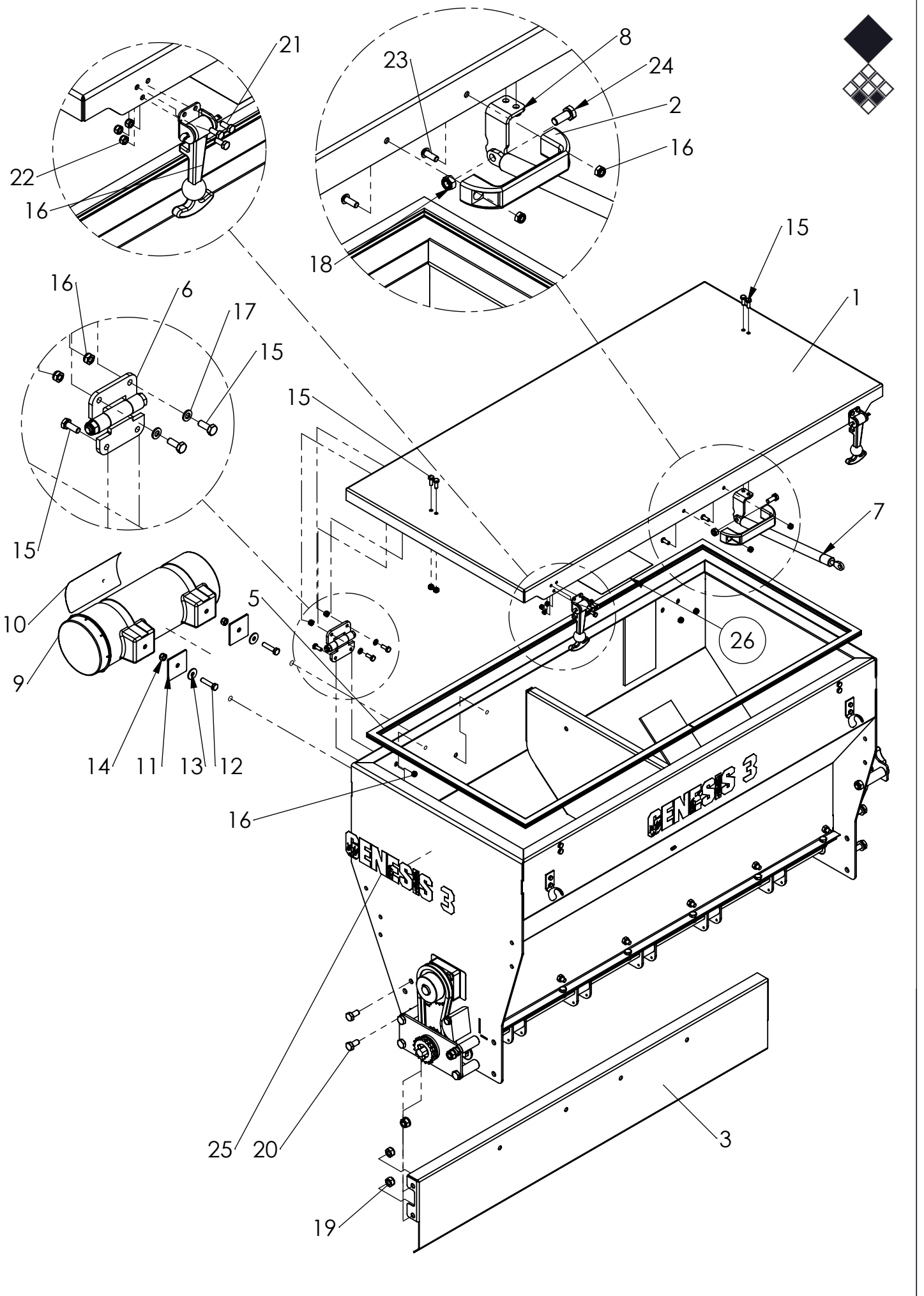
Options:

- Coultter kit : Page 11
- Bogy kit : Page 12-14
- Hydraulic pump kit : Page 15-17

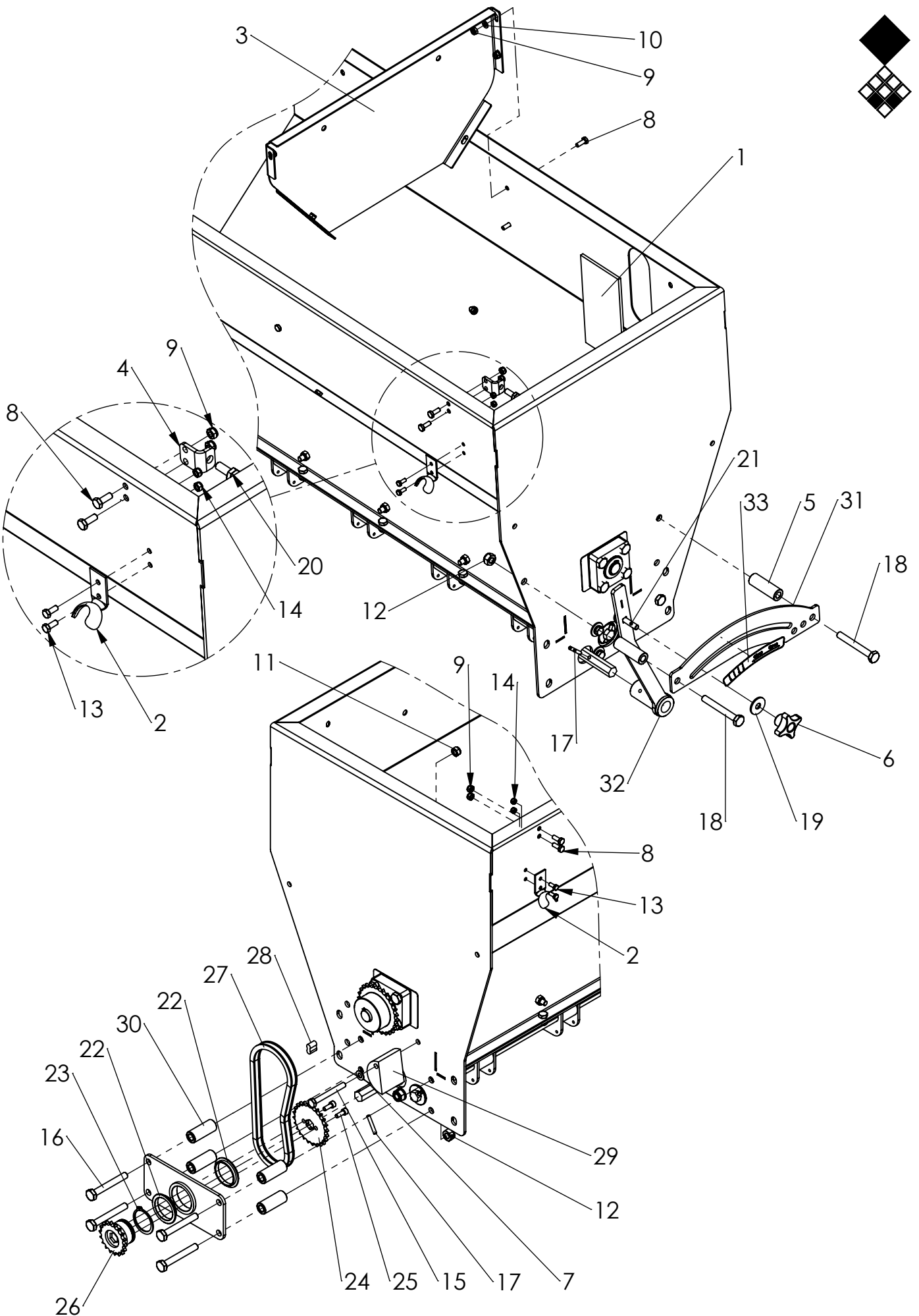






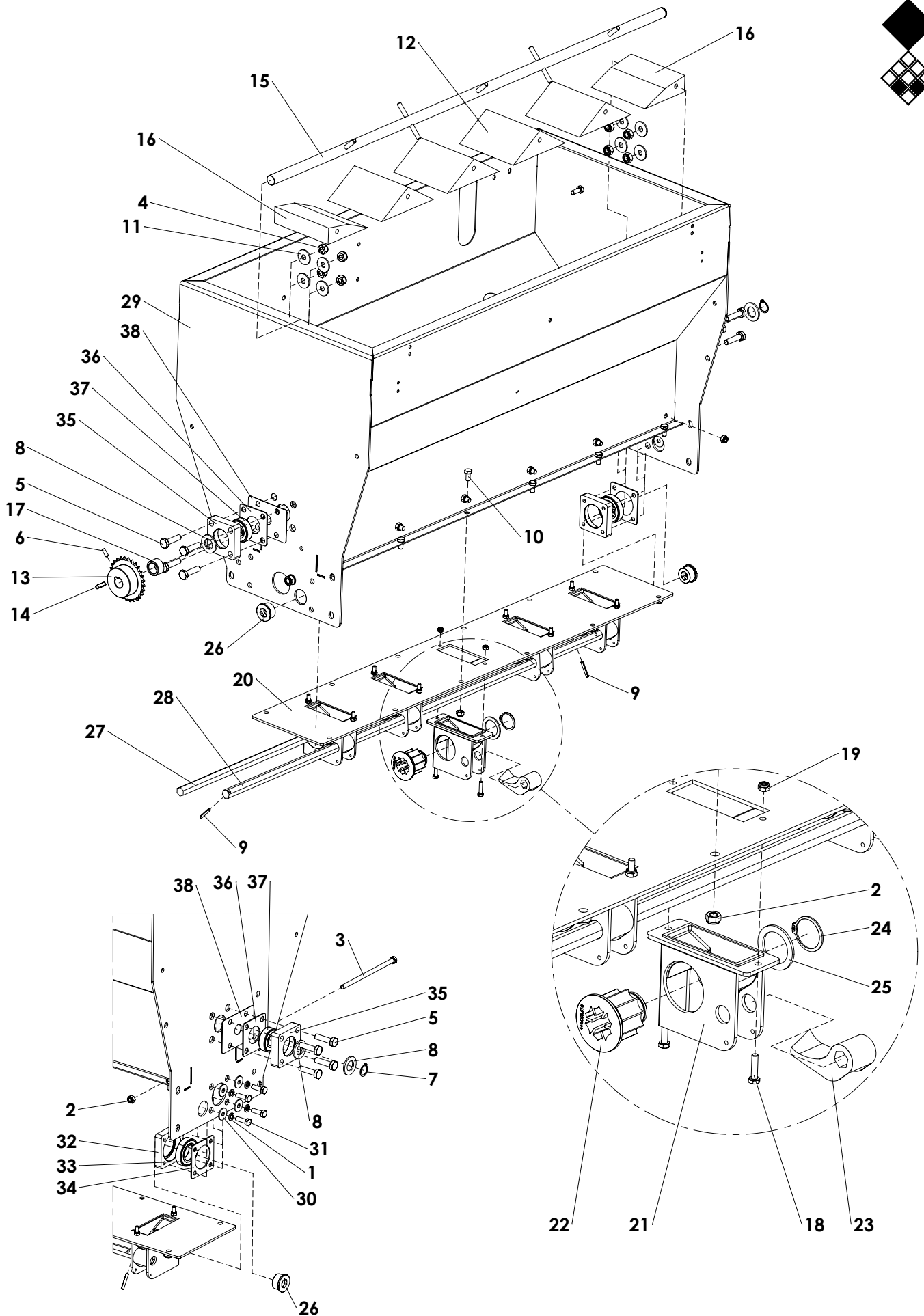




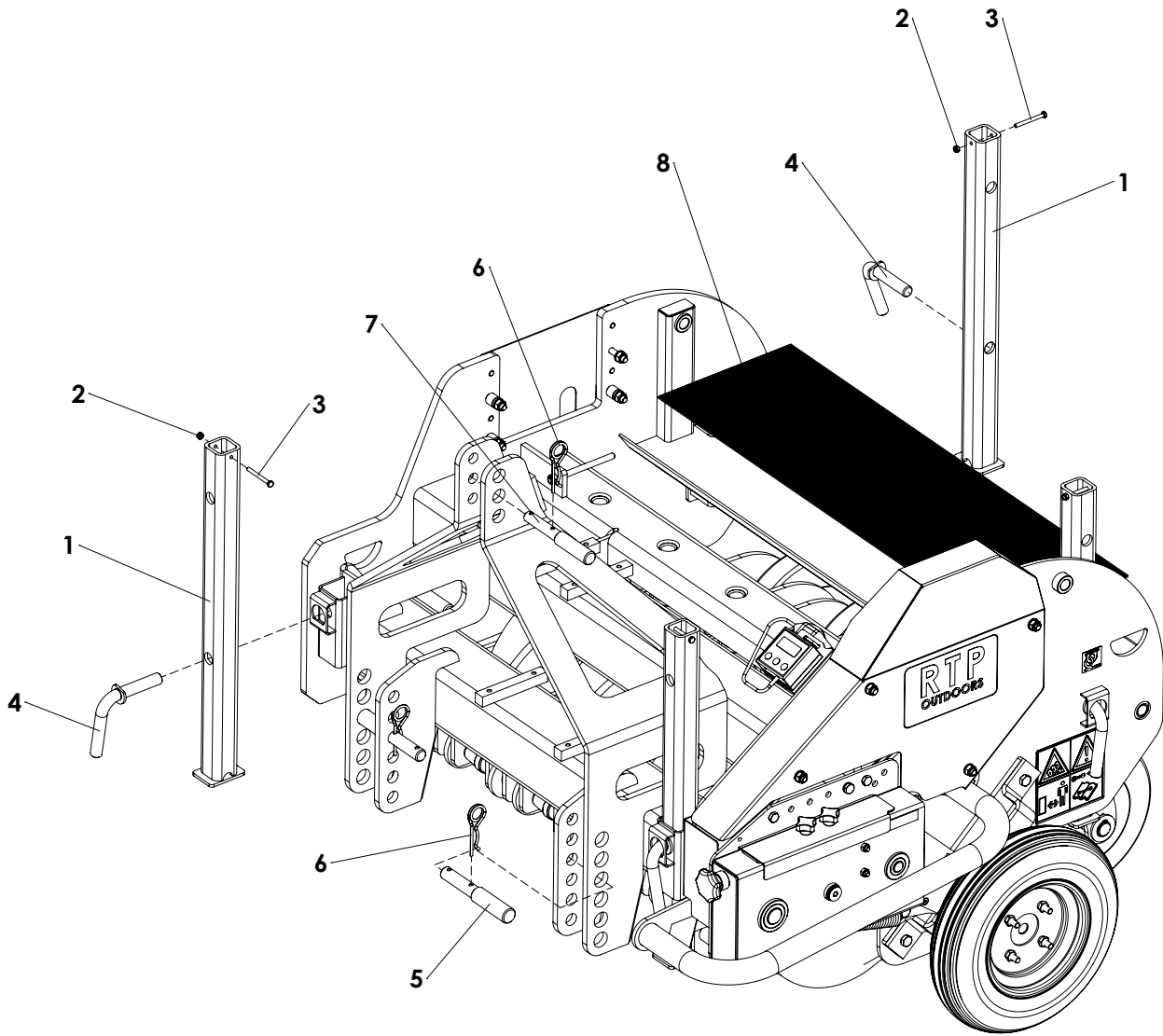




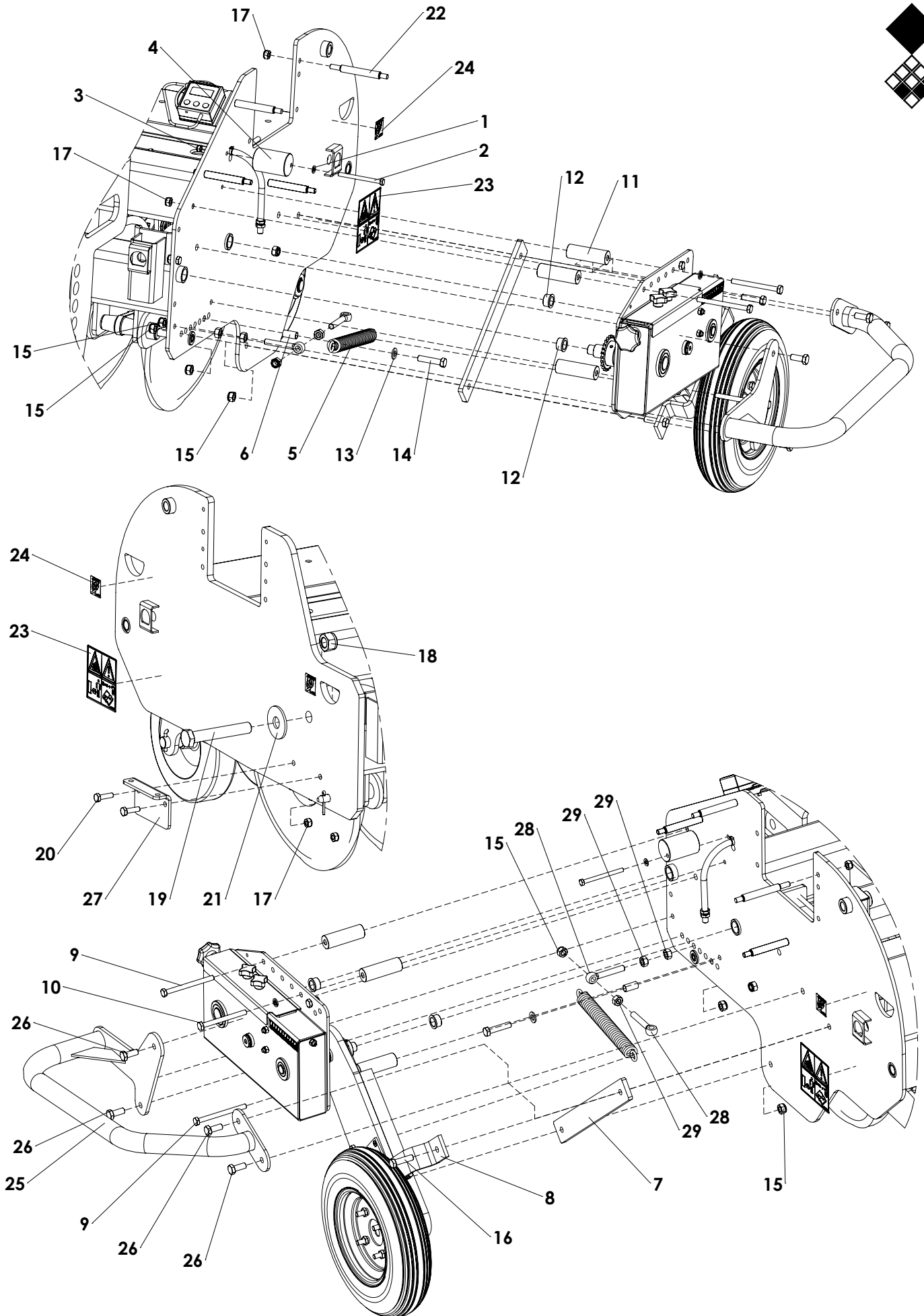




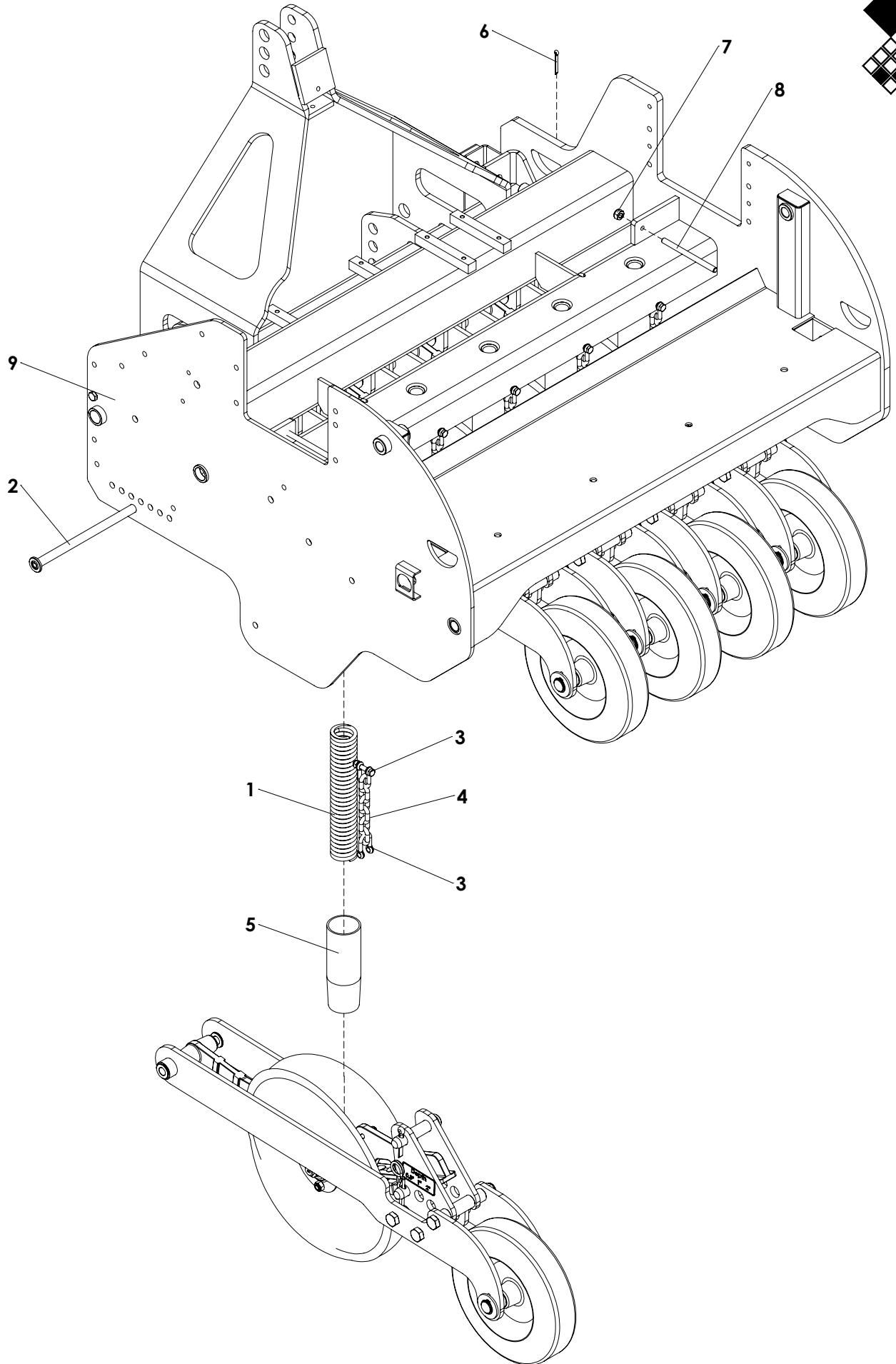




ITEM	PART NUMBER	DESCRIPTION	REMARKS	QUA
1	462.050.655	Leg Overseeder		4
2	830.060.060	Self Lock Nut M6 - ISO 10511		4
3	802.060.600	Bolt M6 x 60 - ISO 4014		4
4	474.201.320	Lock pin		4
5	521.221.600	3-point pin		2
6	523.051.000	R-clip Round 5, DIN 11024		3
7	521.191.600	Top link pin OS		1
8	446.039.400	Rubber grip plate		1

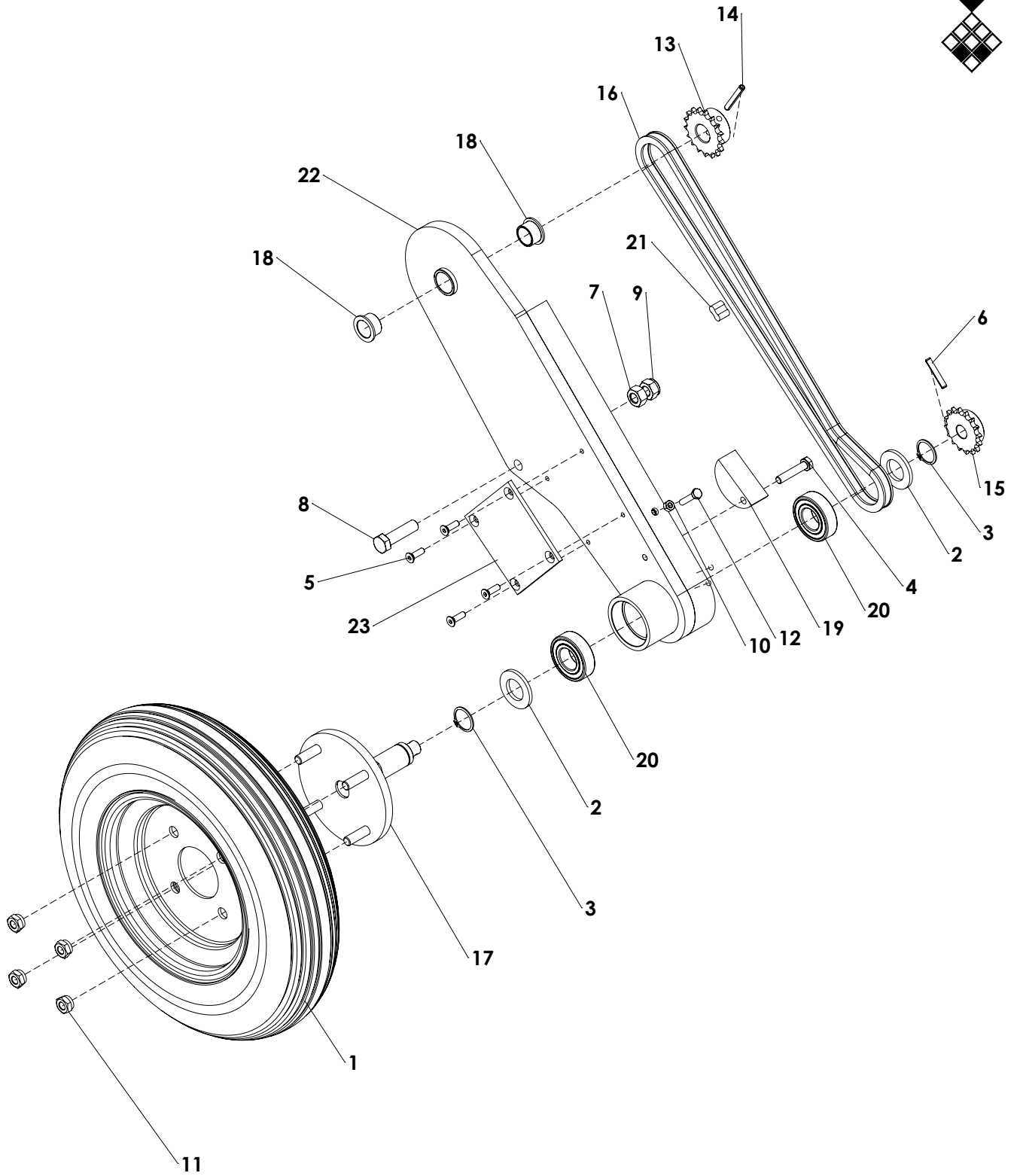




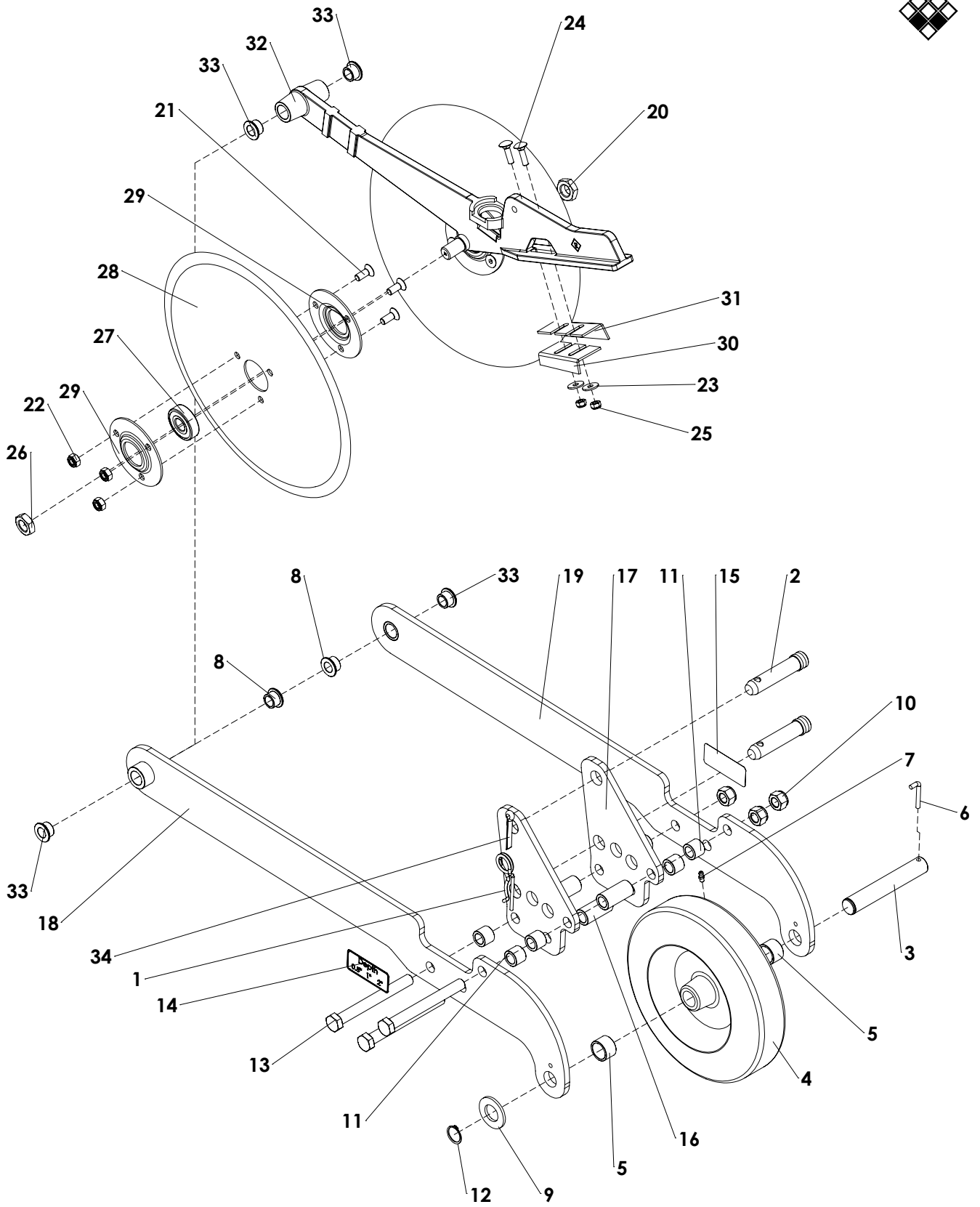




ITEM	PART NUMBER	DESCRIPTION	REMARKS	QUA
1	438.503.960	Compresion spring disc assembly		5
2	474.169.110	Seeding element shaft		1
3	846.080.250	D-Shackle d=8mm		10
4	899.081.520	Chain seeding element 6-links D=8mm L=152 (±6")	Check chain length on machine	5
	899.082.000	Chain seeding element 8-links D=8mm L=200	Check chain length on machine	5
5	444.631.800	Seed guide		5
6	882.050.400	Cotter Pin 5 x 40 - DIN 94		1
7	830.100.100	Self Lock Nut M10 - ISO 10511		2
8	852.101.170	Threaded rod M10		2
9	494.108.115	Frame genesis 3		1





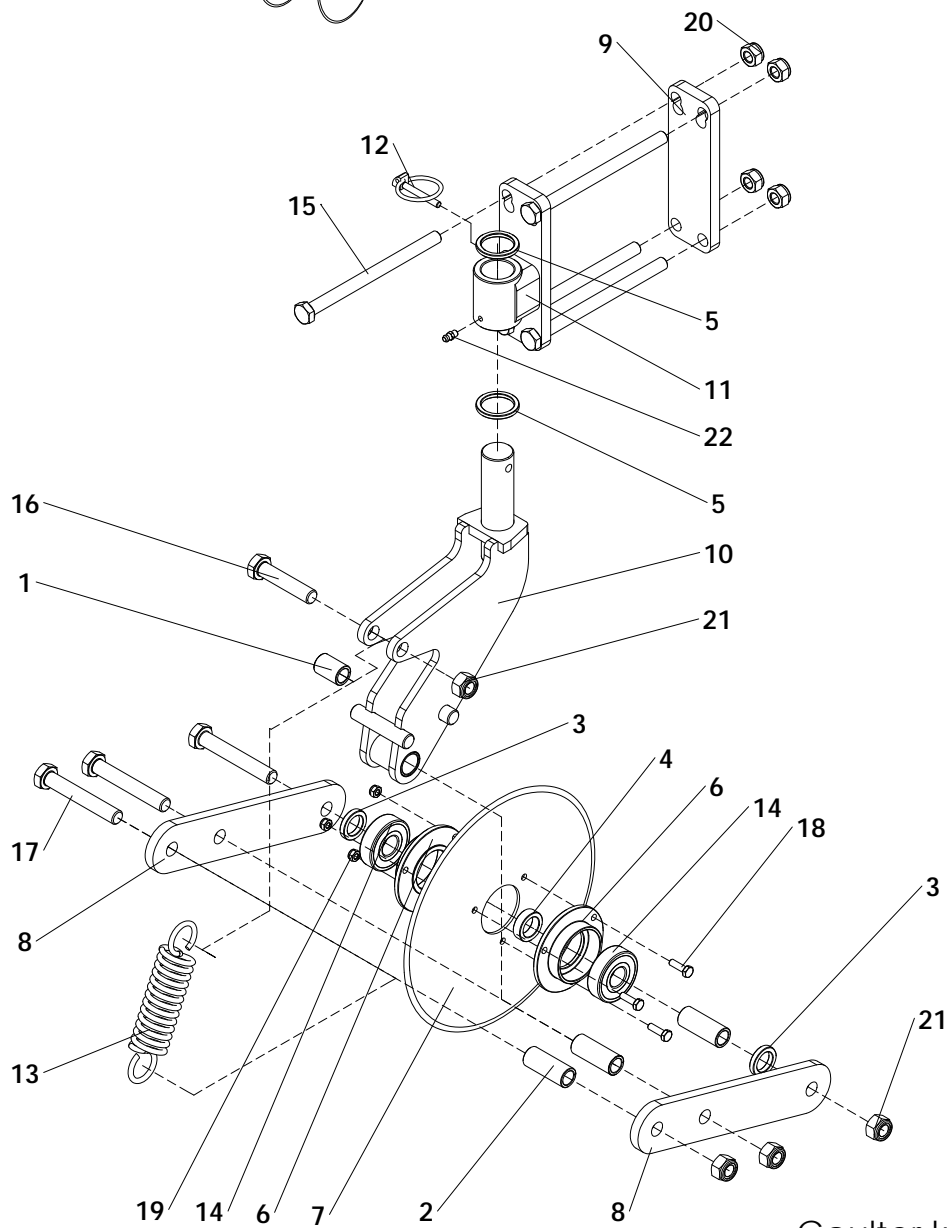
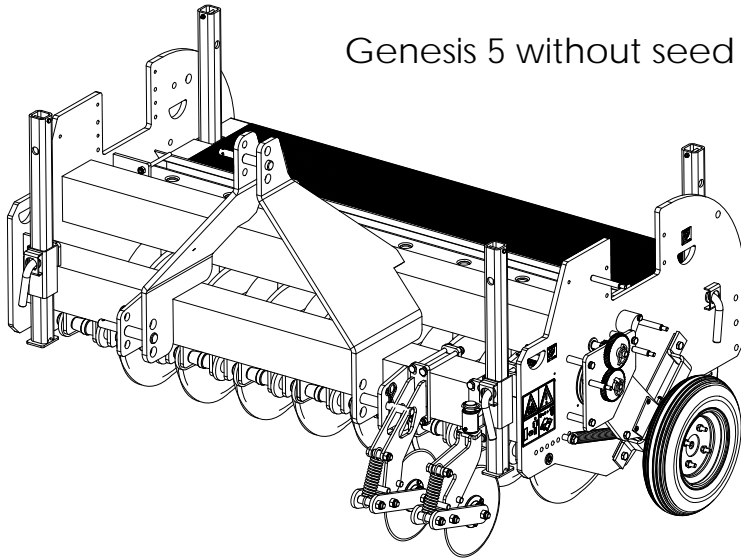


**Elements**  
Genesis 3 - 5 pieces





Genesis 5 without seed hopper

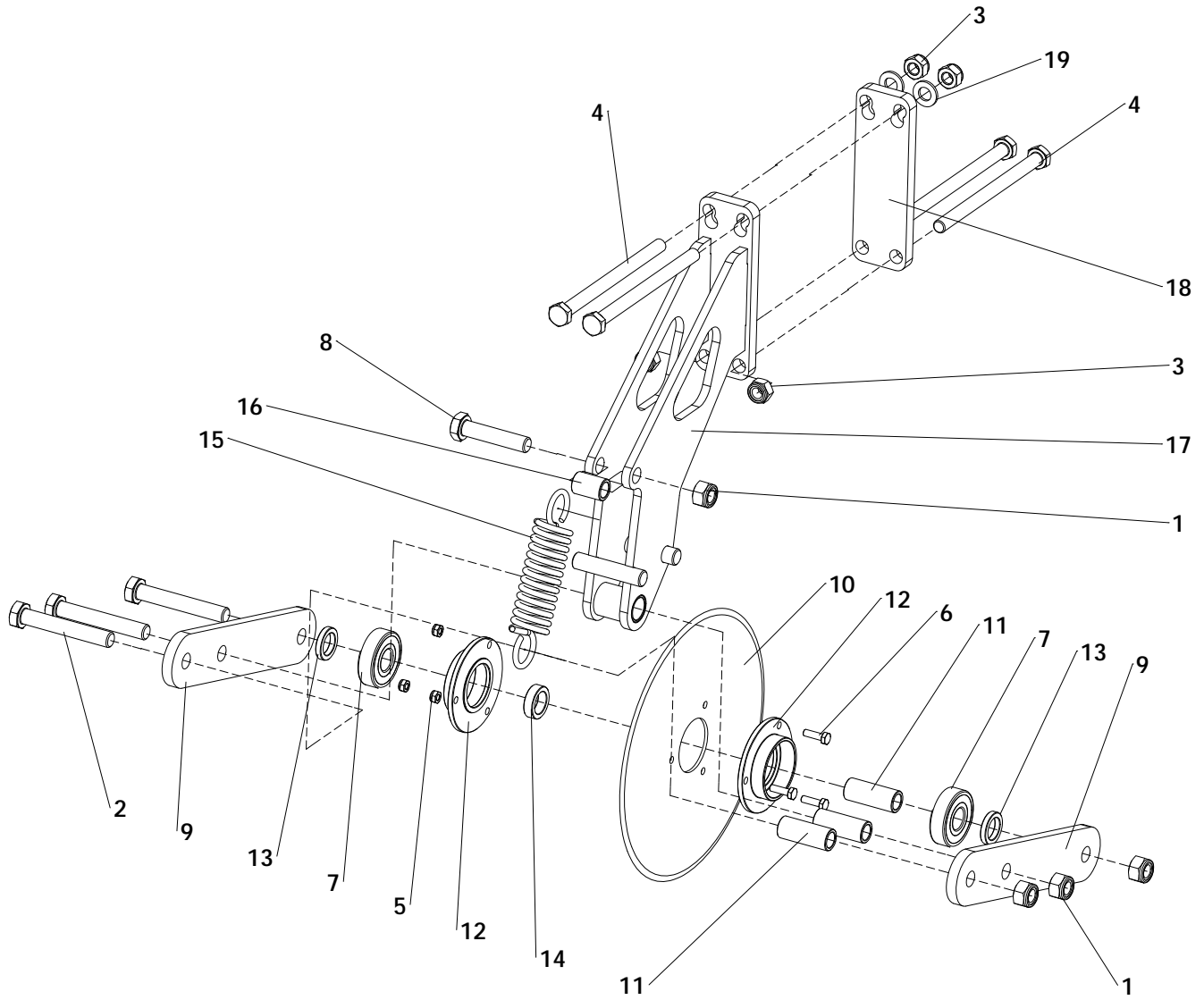


Coultter knife element

- Genesis 3 : 5 pieces
- Genesis 5 : 8 pieces
- Genesis 8 : 13 pieces
- Genesis 10 : 15 pieces

ITEM	PART NUMBER	DESCRIPTION	REMARKS	QUA
1	402.140.290	Distance bush Ø20/Ø14.2 L=29		1
2	402.140.500	Distance bush Ø20/Ø14.2 L=50		3
3	406.210.055	Distance bush Ø30/Ø20.5 L=5.5		2
4	406.210.090	Distance bush Ø30/Ø20.5 L=9		1
5	406.310.040	Ring		2
6	410.520.190	Bearing block		2
7	468.032.502	Disc Ø250/ 3mm		1
8	468.102.600	Arm		2
9	468.121.700	Lock plate		1
10	470.083.100	Pivot frame coulter		1
11	472.451.700	Support bracket		1
12	523.060.320	Linch pin Ø6		1
13	575.041.270	Spring		1
14	713.200.150	Bearing 6304-LLU		2
15	802.121.700	Bolt M12 x 170 - ISO 4014		4
16	802.140.650	Bolt M14 x 65 - ISO 4014		1
17	802.140.900	Bolt M14 x 90 - ISO 4014		3
18	804.060.200	Bolt M6 x 20 - ISO 4017		3
19	830.060.060	Self Lock Nut M6 - ISO 10511		3
20	830.120.120	Self Lock Nut M12 - ISO 10511		4
21	830.140.140	Self Lock Nut M14 - ISO 10511		4
22	880.060.100	Grease nipple M6 DIN 71412A		1
	222.153.000	Coulter kit	Amount for 1 piece	

Quantity per coulter knife element



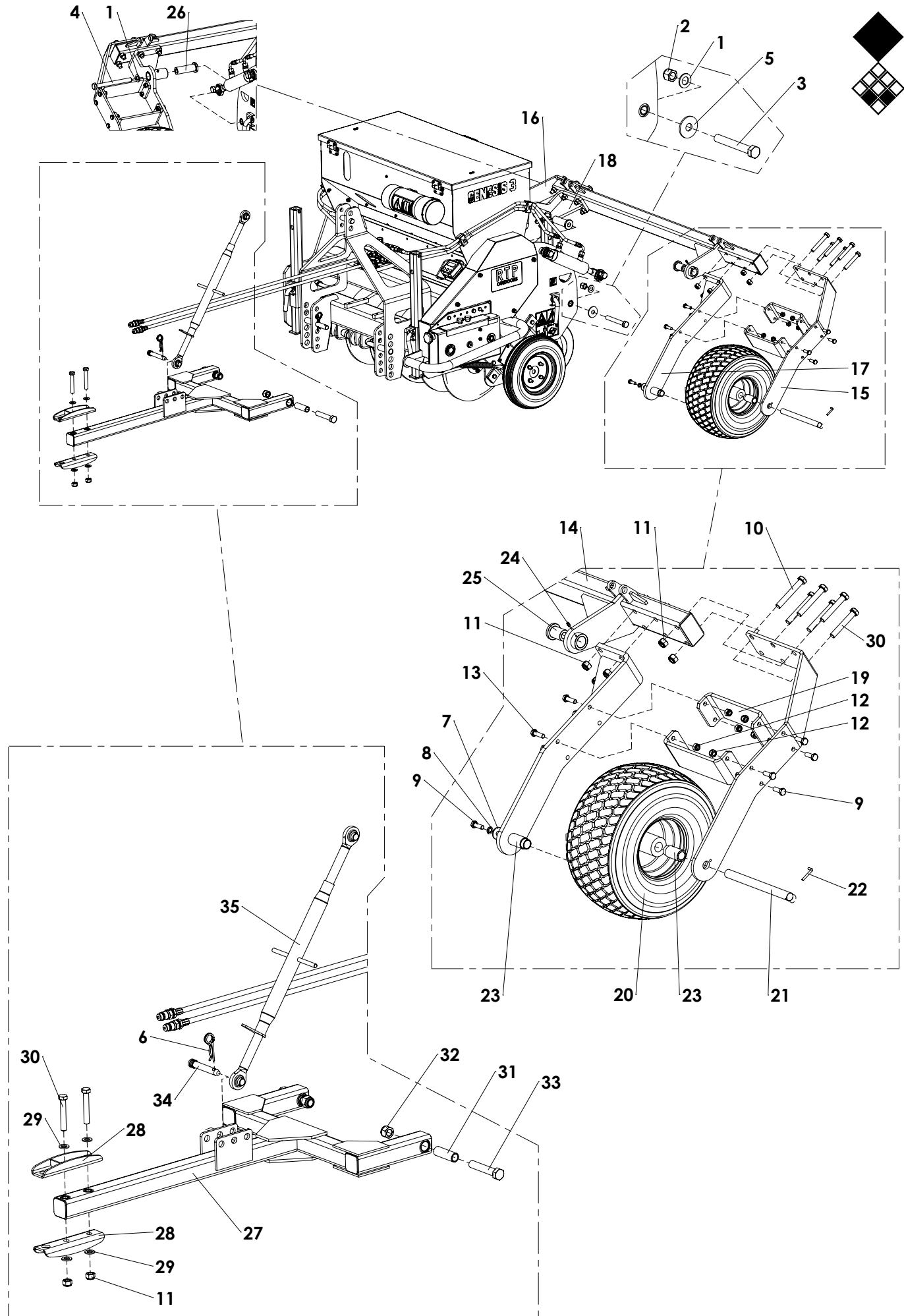
Coultter knife element

- Genesis 3 : 5 pieces
- Genesis 5 : 8 pieces
- Genesis 8 : 13 pieces
- Genesis 10 : 15 pieces

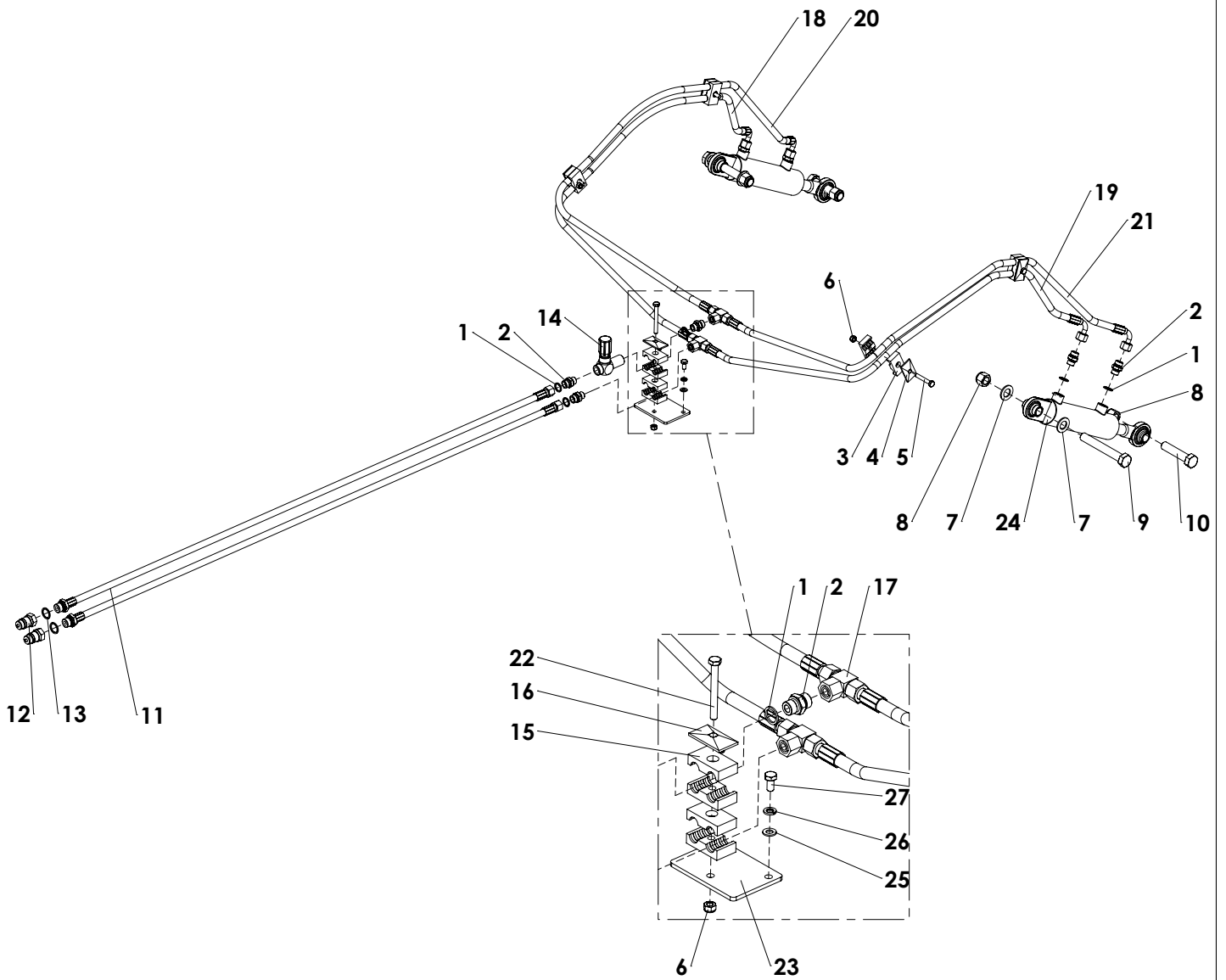
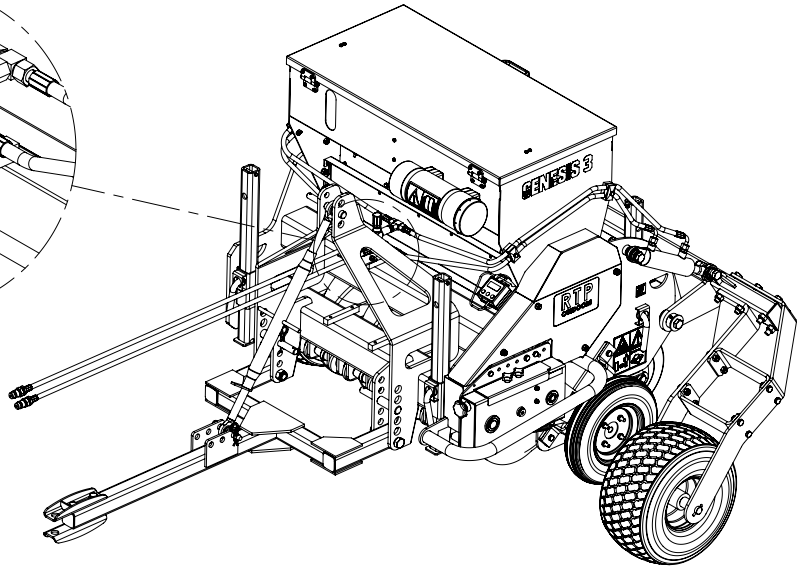
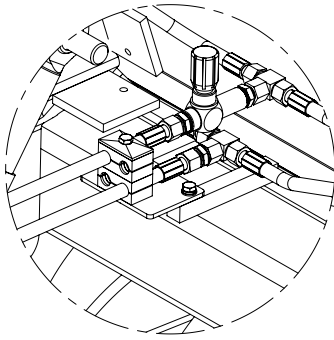


ITEM	PART NUMBER	DESCRIPTION	REMARKS	QUA
1	830.140.140	Self Lock Nut M14 - ISO 10511		4
2	802.140.900	Bolt M14 x 90 - ISO 4014		3
3	830.120.120	Self Lock Nut M12 - ISO 10511		4
4	802.121.700	Bolt M12 x 170 - ISO 4014		4
5	830.060.060	Self Lock Nut M6 - ISO 10511		3
6	804.060.200	Bolt M6 x 20 - ISO 4017		3
7	713.200.150	Bearing 6304-LLU		2
8	802.140.650	Bolt M14 x 65 - ISO 4014		1
9	468.102.600	Arm		2
10	468.032.502	Disc Ø250/ 3mm		1
11	402.140.500	Distance bush Ø20/Ø14.2 L=50		3
12	410.520.190	Bearing block		2
13	406.210.055	Distance bush Ø30/Ø20.5 L=5.5		2
14	406.210.090	Distance bush Ø30/Ø20.5 L=9		1
15	575.041.270	Spring		1
16	402.140.290	Distance bush Ø20/Ø14.2 L=29		1
17	470.083.450	Support bracket		1
18	468.121.700	Lock plate		1
19	864.120.030	Washer M12 - ISO 7089		2
	222.153.010	Fixed coultter kit	Amount for 1 piece	

Quantity per coultter knife element

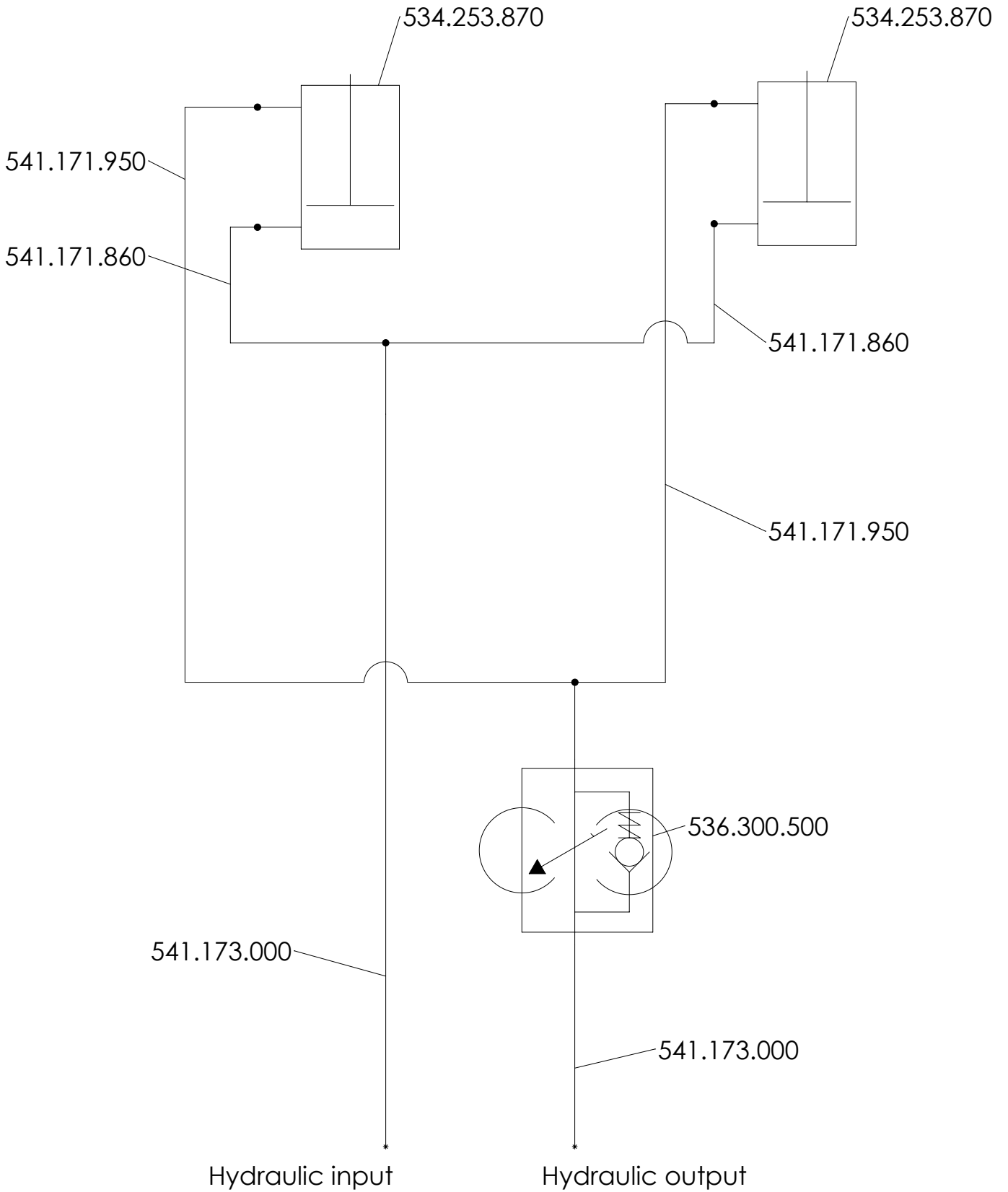


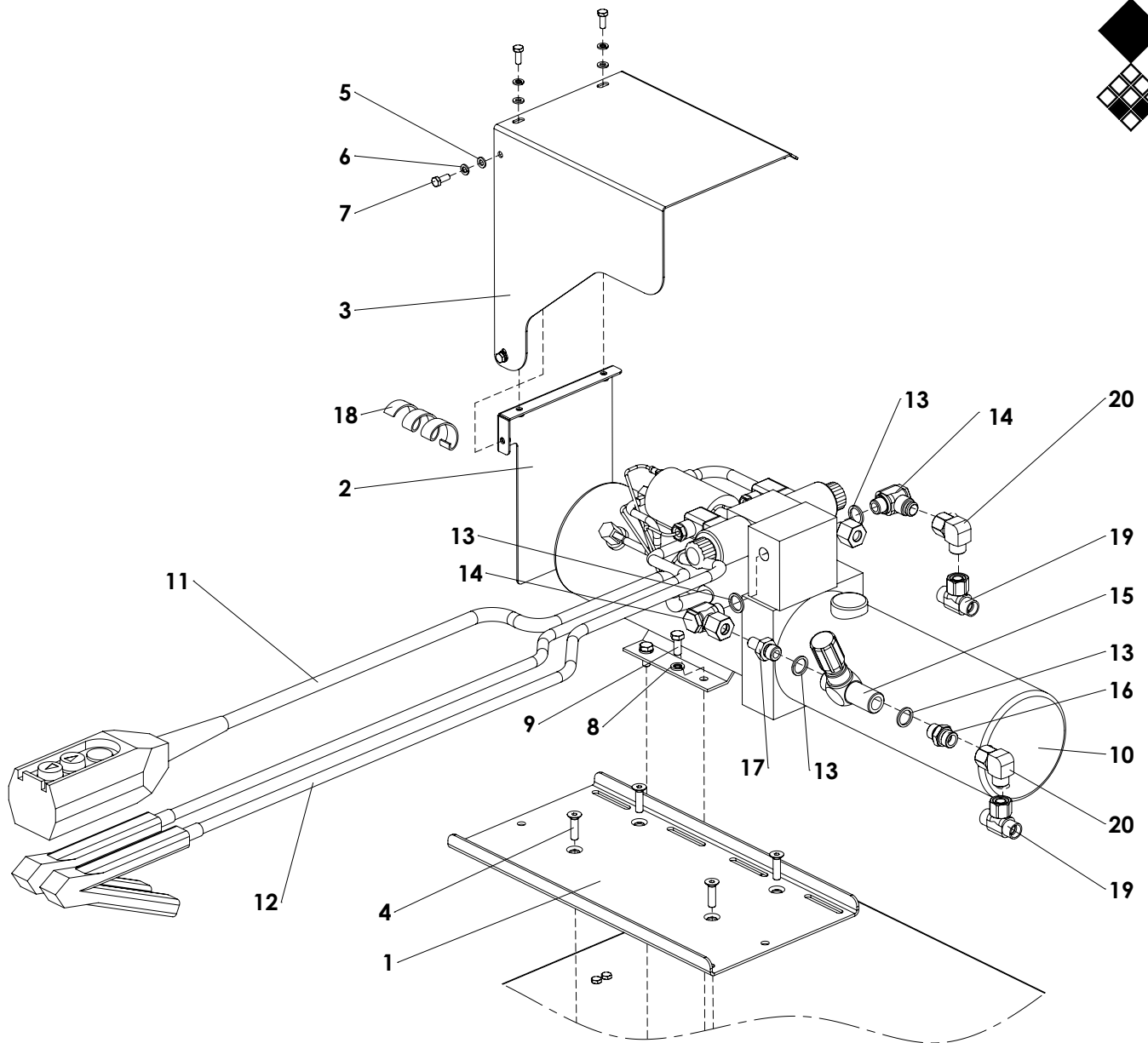
ITEM	PART NUMBER	DESCRIPTION	REMARKS	QUA
1	864.200.030	Washer M20 - ISO 7089		2
2	840.190.230	SL Nut 3/4"-16 UNF		2
3	808.191.400	HFBOLT 0.75-16x5.5x1.75-UNF		1
4	808.192.000	Hex. Bolt 3/4"-16 x 8" UNF		1
5	864.200.041	Large washer M20 - DIN 9021		1
6	523.051.000	R-clip Round 5, DIN 11024		1
7	864.120.031	Large washer M12 - DIN 9021		2
8	866.120.020	Spring Washer M12 - DIN 127		2
9	804.120.350	Bolt M12 x 35 - ISO 4017		10
10	802.161.100	Bolt M16 x 110 - ISO 4014		8
11	830.160.160	Self Lock Nut M16 - ISO 10511		14
12	830.120.120	Self Lock Nut M12 - ISO 10511		16
13	804.120.400	Bolt M12 x 40 - ISO 4017		8
14	494.137.028	Main beam		1
15	468.109.100	Wheel support long		1
16	468.109.102	Wheel support long		1
17	470.156.170	Inner support wheel boggy		1
18	470.156.172	Inner support wheel boggy		1
19	464.102.652	U-Bridge		4
20	511.542.238	Wheel 18x9.5x8 Block profile		2
21	416.252.940	Wheel Shaft		2
22	424.060.480	Lock Pin		2
23	404.250.700	Distance Bush Wheel		4
24	880.060.100	Grease nipple M6 DIN 71412A		2
25	404.190.550	Collar bush Ø50/Ø34.8 Ø19.5 L=102		1
26	404.191.020	Collar bush		1
27	494.063.103	Drawbar		1
28	470.062.302	Tow eye		2
29	864.160.030	Washer M16 - ISO 7089		4
30	802.161.000	Bolt M16 x 100 - ISO 4014		6
31	406.220.850	Distance bush Ø28/Ø22 L=85		2
32	830.220.220	Self Lock Nut M22 - ISO 10511		2
33	802.221.200	Bolt M22 x 120 - ISO 4014		2
34	521.191.120	Top Link Pin		1
35	478.257.970	Toplink		1



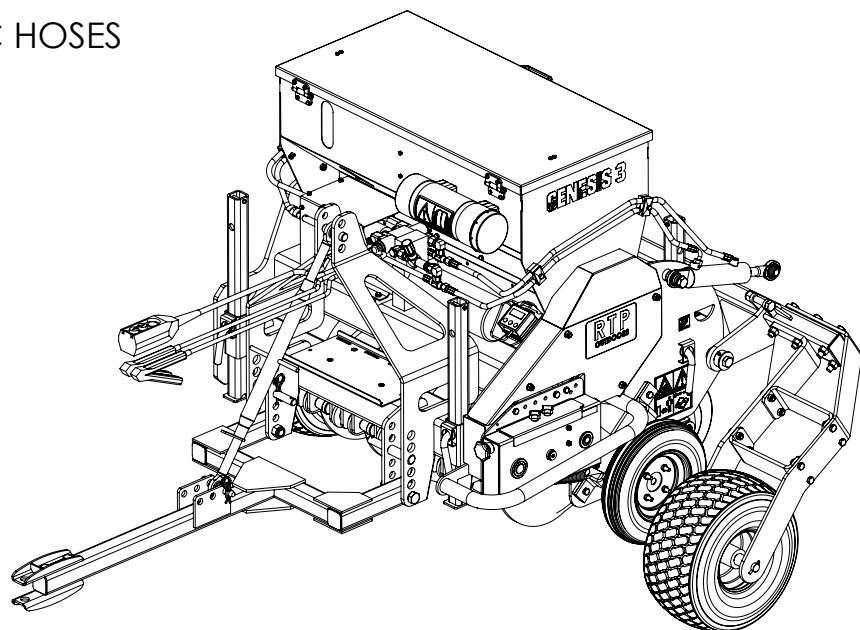






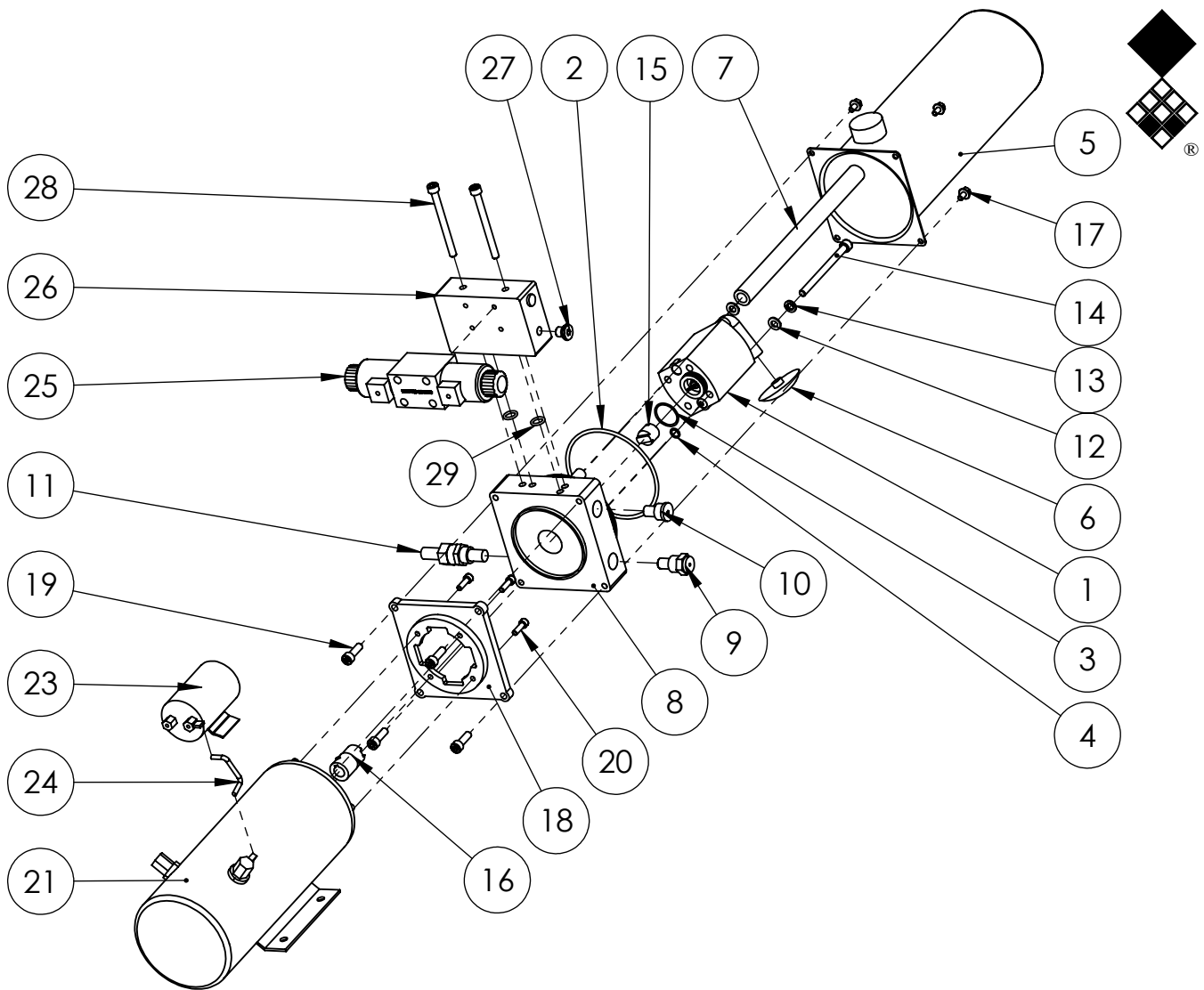


RE-USE HYDRAULIC HOSES  
FROM BOGY KIT



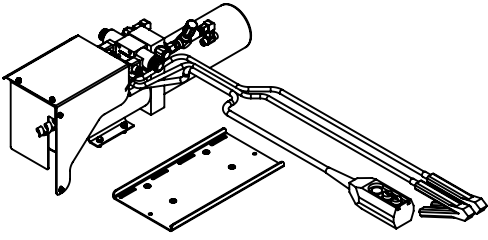


ITEM	PART NUMBER	DESCRIPTION	REMARKS	QUA
1	470.034.200	Accu tray		1
2	456.022.017	Cover		1
3	456.027.021	Cover		1
4	816.080.300	Bolt M8 x 30 - DIN 7991		4
5	864.060.030	Washer M6 - ISO 7089		4
6	866.060.020	Spring Washer M6 - DIN 127		4
7	804.060.160	Bolt M6 x 16 - ISO 4017		4
8	866.080.020	Spring Washer M8 - DIN 127		4
9	804.080.200	Bolt M8 x 20 - ISO 4017		4
10	539.130.680	Hydraulic pump + oil tank		1
11	569.184.000	Electric control unit		1
12	563.164.500	Cable set 4.5mtr		1
13	874.170.020	Copper washer 3_8		4
14	544.173.430	L-connector G3/8-12mm		2
15	536.300.500	Flow reducer 3/8" FPU05001		1
16	544.170.120	Nipple BSP 3_8" x pipe 12 (M18)		1
17	549.120.400	Pipe nipple		1
18	569.305.000	Protection sleeve L=500mm		1
19	544.124.126	T_Connector PM, Pipe 12-M18		2
20	544.123.180	L-Connector PM, Pipe 12-M18		2
	222.095.202	Complete set hydraulic pump assembly		
		Use 0.92 Gallon (3.5L) hydraulic oil 32 cST		

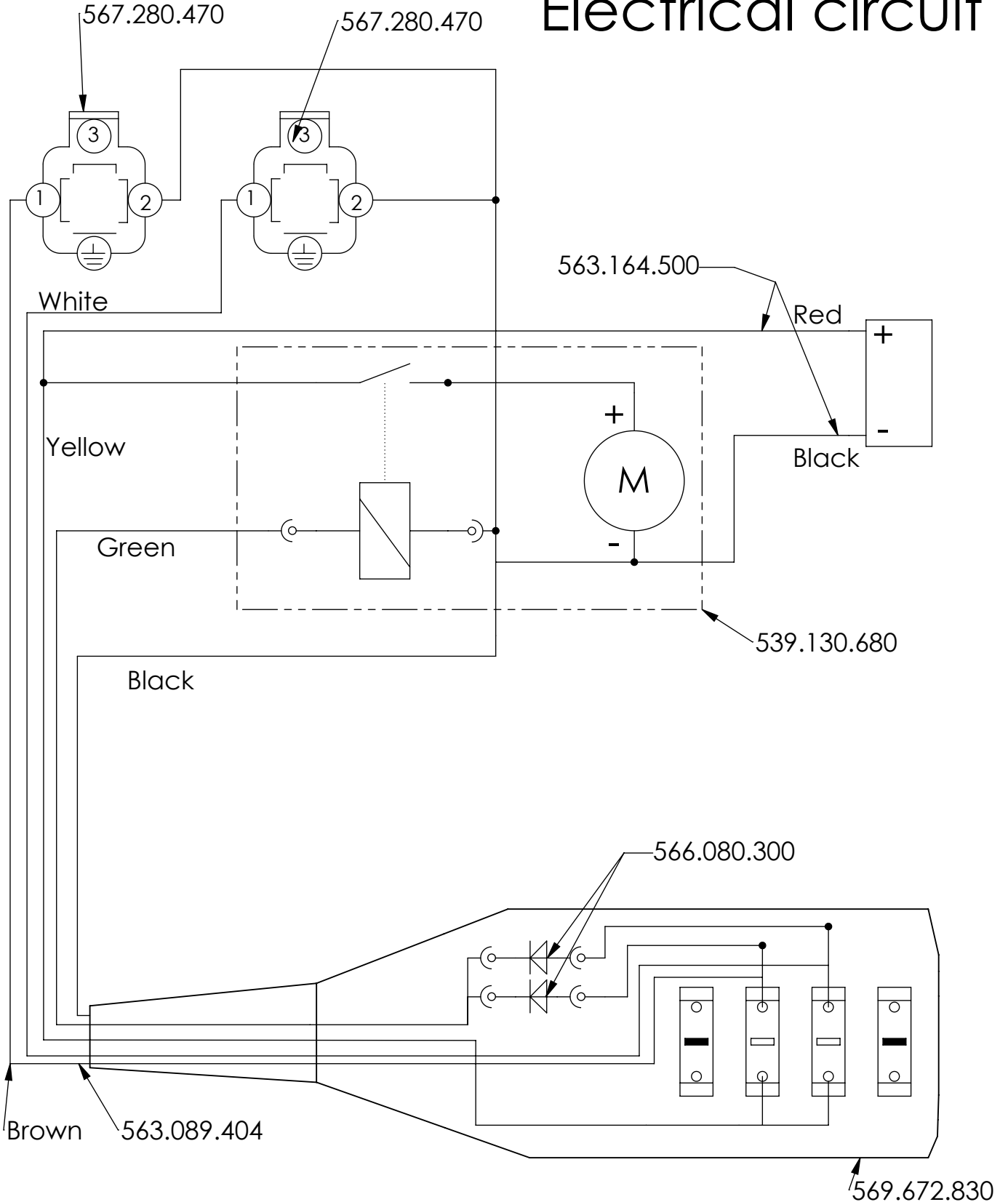


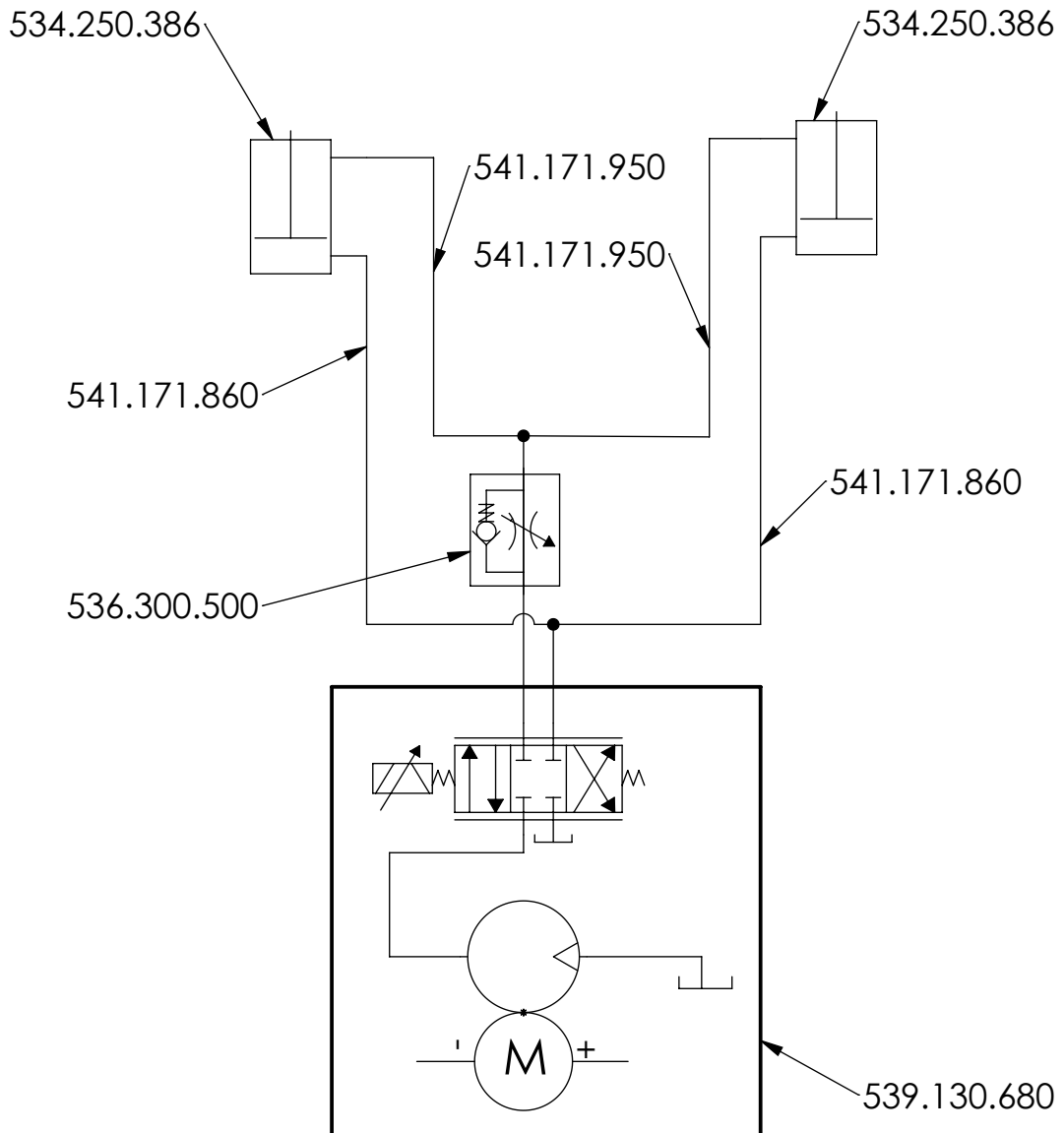
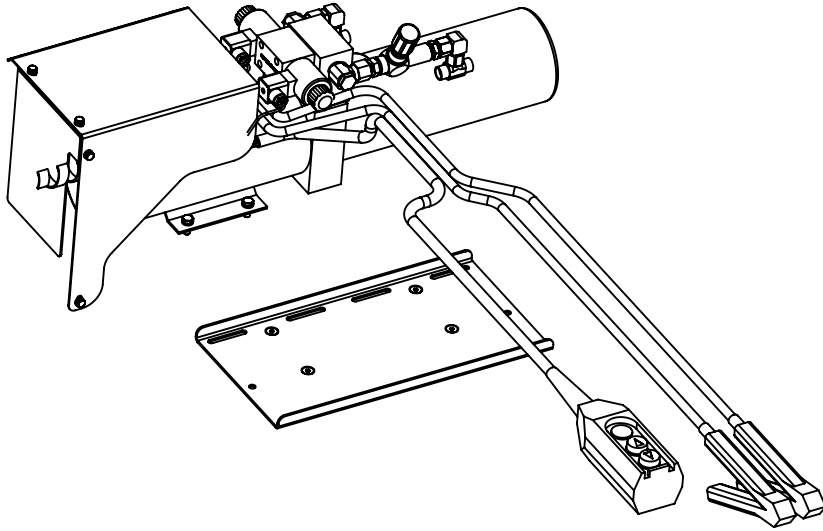
ITEM	PART NUMBER	DESCRIPTION	REMARKS	QUA
1	539.130.680-S02	Hydro pump 4.3cc		1
2	766.129.040	O-ring 117x4mm		1
3	766.028.020	O-ring 28x2.5mm		1
4	766.009.020	O-ring 9.25x1.78mm		1
5	539.130.680-S01	Oil tank		1
6	539.130.680-S03	Filter		1
7	541.210.280	Hose		1
8	539.130.680-S04	Central Flange		1
9	539.130.680-S05	Non return valve		1
10	539.130.680-S06	Cavityplug		1
11	539.130.680-S07	Safety valve		1
12	864.080.030	Washer M8 - ISO 7089		2
13	866.080.020	Spring Washer M8 - DIN 127		2
14	814.081.202	Bolt M8 x 120 class 12.9 reworked - DIN 912		2
15	539.130.680-S08	Pump coupling		1
16	539.130.680-S09	Coupling EM71B14HD		1
17	805.060.100	DIN 6921 - M6 x 10 x 10 - C		4
18	539.130.680-S10	Flange		1
19	814.080.251	Bolt M8 x 25 - DIN 912		4
20	814.060.200	Bolt M6 x 20 - DIN 912		4
21	539.130.680-S11	DC motor		1
23	539.130.680-S12	DC motor relais		1
24	539.130.680-S13	DC cable		1
25	564.452.150	Electric valve		1
26	539.130.680-S14	Manifold I section		1
27	549.130.170	Blind plug G1/4		1
28	814.080.900	Bolt M8 x 90 class 12.9 - DIN 912		2
29	766.012.020	O-ring 12.37x2.62mm		2

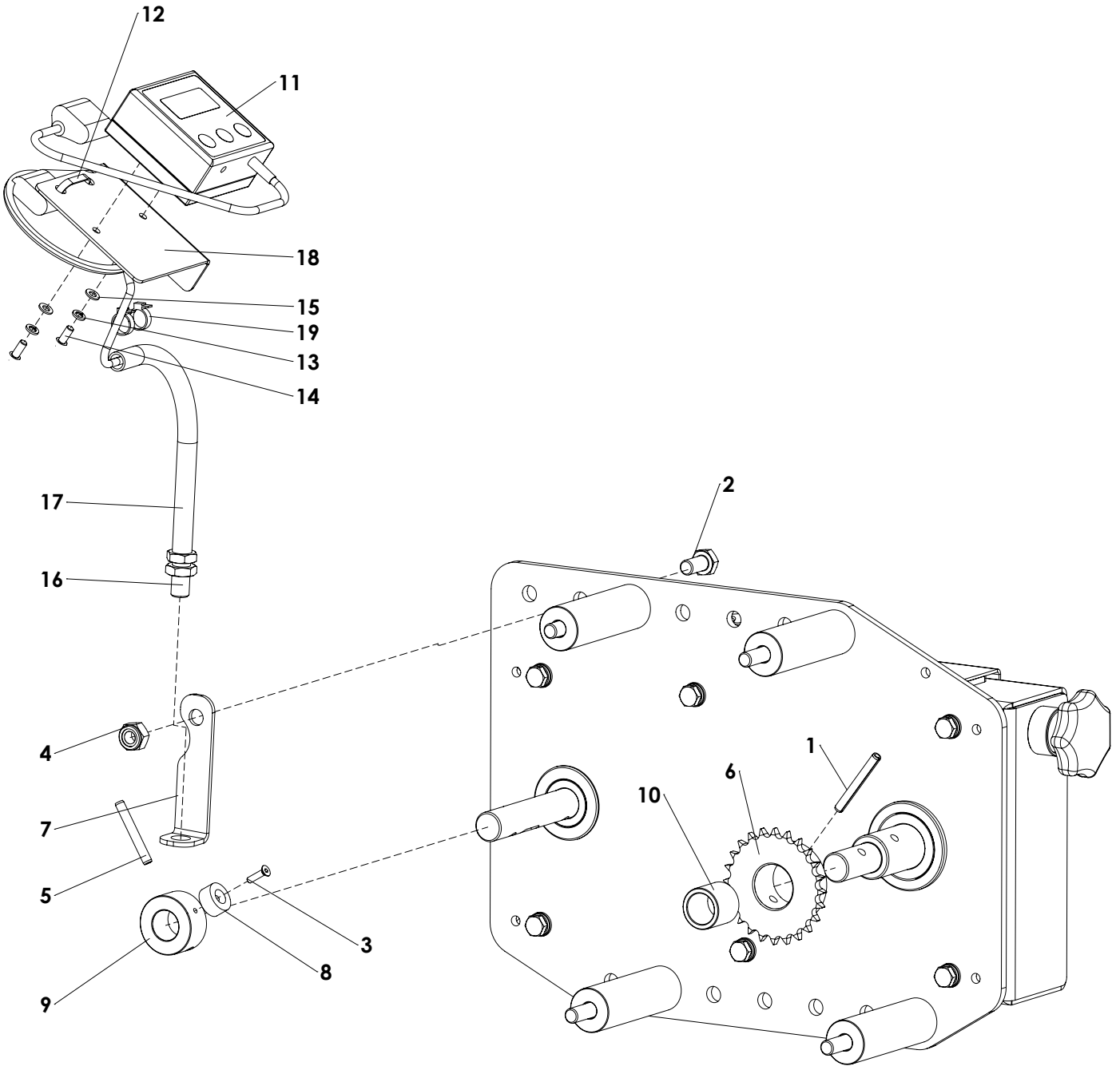




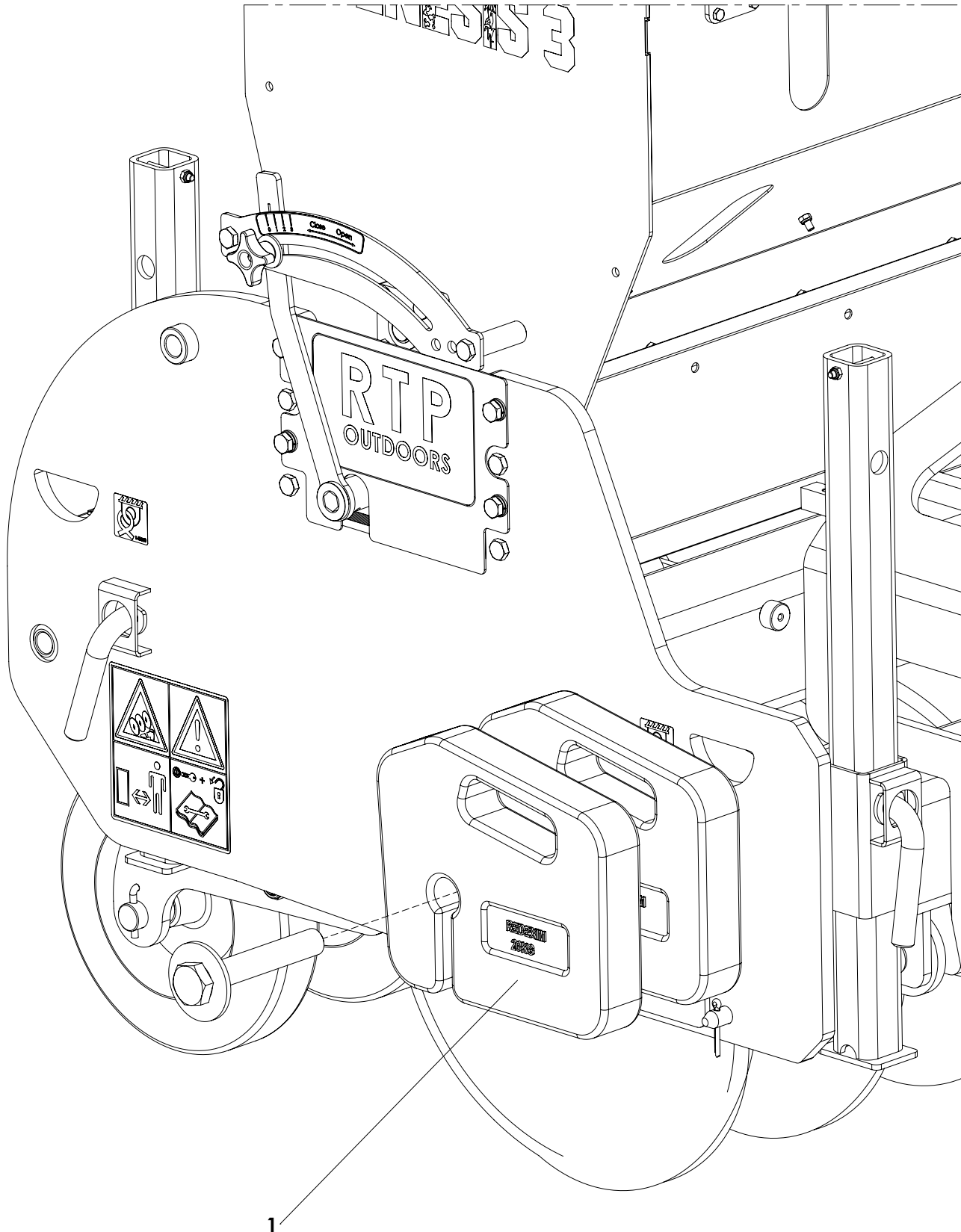
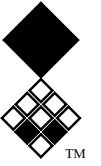
# Electrical circuit







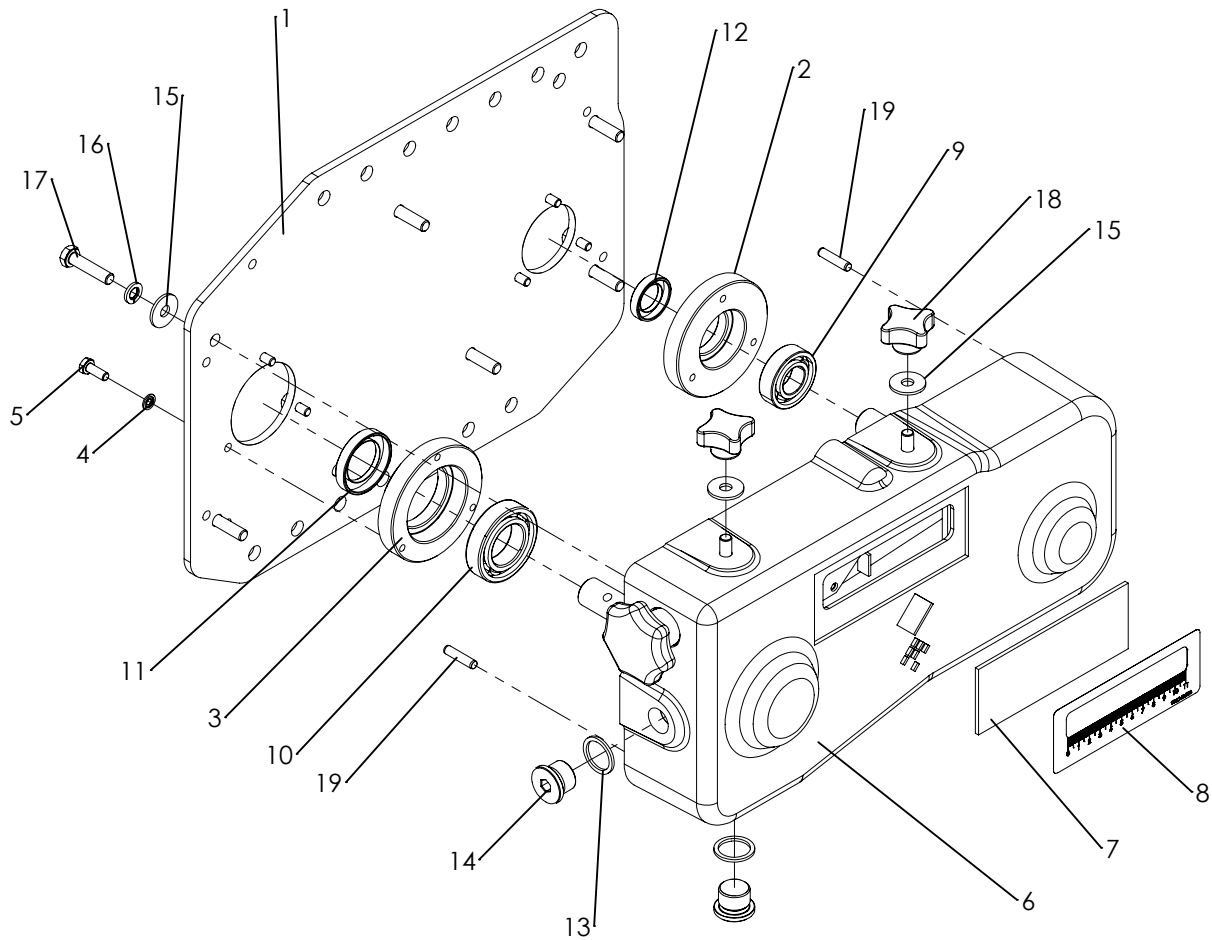




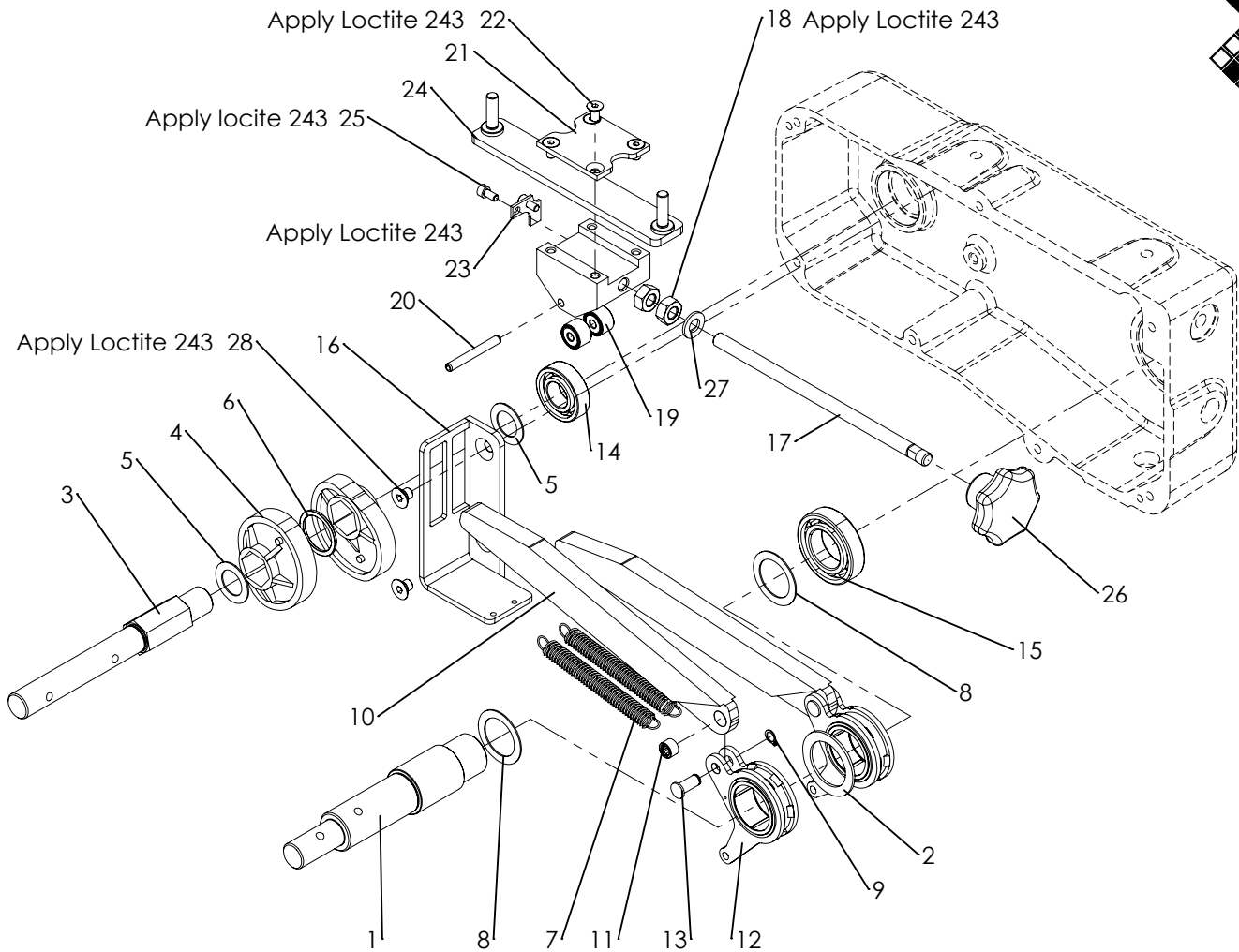
1  
Optional weight to compensate oblique entry.  
Maximum amount of weights to be used is 2 pieces.



ITEM	PART NUMBER	DESCRIPTION	REMARKS	QUA
1	492.502.800	Weight 20kg		2

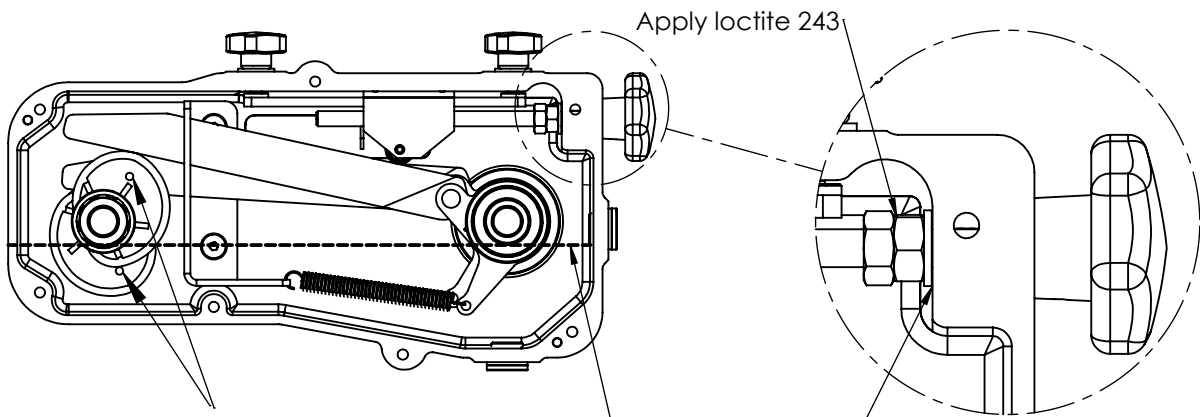


ITEM	PART NUMBER	DESCRIPTION	REMARKS	QUA
1	468.064.060	Lid plate		1
2	434.210.850	Bearing hub Ø42		1
3	434.230.850	Bearing hub Ø55		1
4	874.060.020	Bonded seal ring M6		6
5	804.060.160	Bolt M6 x 16 - ISO 4017		6
6	448.380.800	Casted gearbox housing		1
7	444.021.380	Window		1
8	934.140.510	Gauge decall		1
9	711.200.120	Bearing 6004		2
10	711.300.132	Bearing 6006		2
11	762.300.080	Oil seal 30-45-8		1
12	762.200.070	Oil seal 20-32-7		1
13	874.210.020	Copper washer 1_2		2
14	549.210.200	Blind plug G1/2		2
15	864.080.024	Large washer M8 - DIN 9021		9
16	866.080.020	Spring Washer M8 - DIN 127		7
17	804.080.350	Bolt M8 x 35 - ISO 4017		7
18	836.080.402	Closed Knob M8 - Din 6335		2
19	876.060.260	Parallel pin ISO 8734 - 6 x 26		2
	623.200.400	Gearbox complete		



ITEM	PART NUMBER	DESCRIPTION	REMARKS	QUA
1	422.351.382	Shaft		1
2	444.020.500	Washer		1
3	422.242.020	Shaft		1
4	444.200.730	Excenter		2
5	868.032.100	Shim Ø20xØ32x1.0 DIN988	Quantity depending on clearance	
6	406.280.030	Spacer		1
7	575.010.800	Spring		2
8	868.042.100	Shim Ø30xØ42x1.0 DIN988	Quantity depending on clearance	
9	870.008.080	Circlip d=8 - DIN 471		2
10	464.152.702	Rocker strip		2
11	721.080.080	Bearing HK0808		2
12	442.200.980	Rocker arm assembly		2
13	418.080.200	Pin		2
14	711.200.120	Bearing 6004		1
15	711.300.132	Bearing 6006		1
16	470.120.550	Guide		1
17	852.102.100	Threaded rod M10x210		1
18	826.100.100	Nut M10 - DIN 934		2
19	721.060.120	Roller bearing		2
20	878.060.500	Roll Pin 6 x 50 - ISO 8752		1
21	468.040.530	Lock plate		1
22	816.060.122	Bolt M6 x 12 - DIN 7991		4
23	468.020.490	Indicator		1
24	468.061.620	Slider bracket		1
25	814.050.100	DIN 912 M5 x 10 --- 10C		2
26	836.100.630	Knob M10 with set screw		1
27	864.100.030	Washer M10 - ISO 7089		1
28	816.080.100	Bolt M8 x 10 - DIN 7991		2

**Timing, Spindle adjustment and Oil level**



Warning! Make sure the excenters are positioned correct:

- The nodge has to be faced outwards.
- Timing: 180° shifted from each other

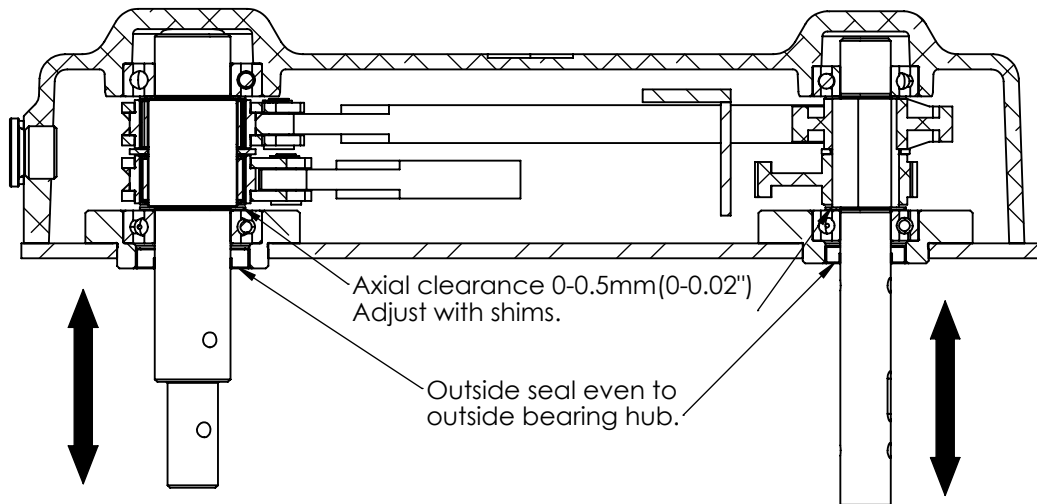
If not correctly installed a shocked rotation will occur at the output shaft.

Apply loctite 243

Keep  $\pm 2\text{mm}$  (0.08") clearance distance between washer and casing! Adjustment must rotate smooth.

Fill gearbox with  $\pm 1,4\text{L}$  (0.37gal.) 80W90 oil  
Fill till oil level line (Bottom level plug)

**Axial clearance**

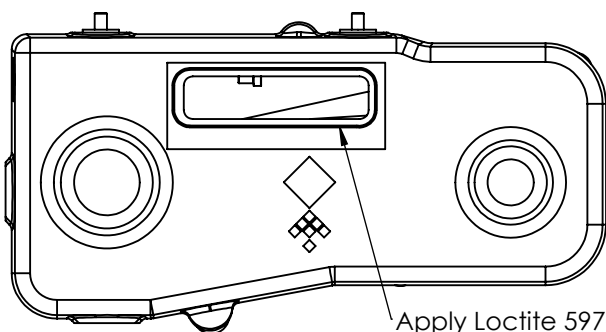


Axial clearance 0-0.5mm (0-0.02")  
Adjust with shims.

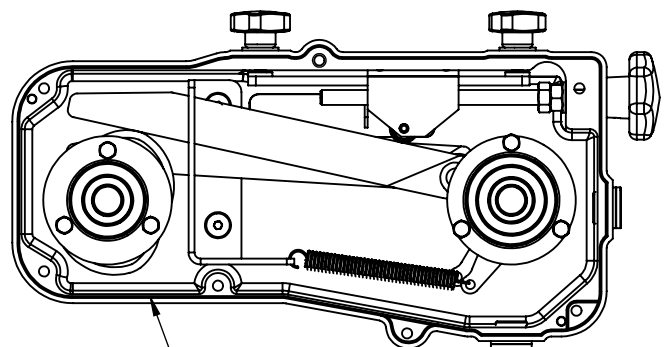
Outside seal even to outside bearing hub.

**Sealing plan**

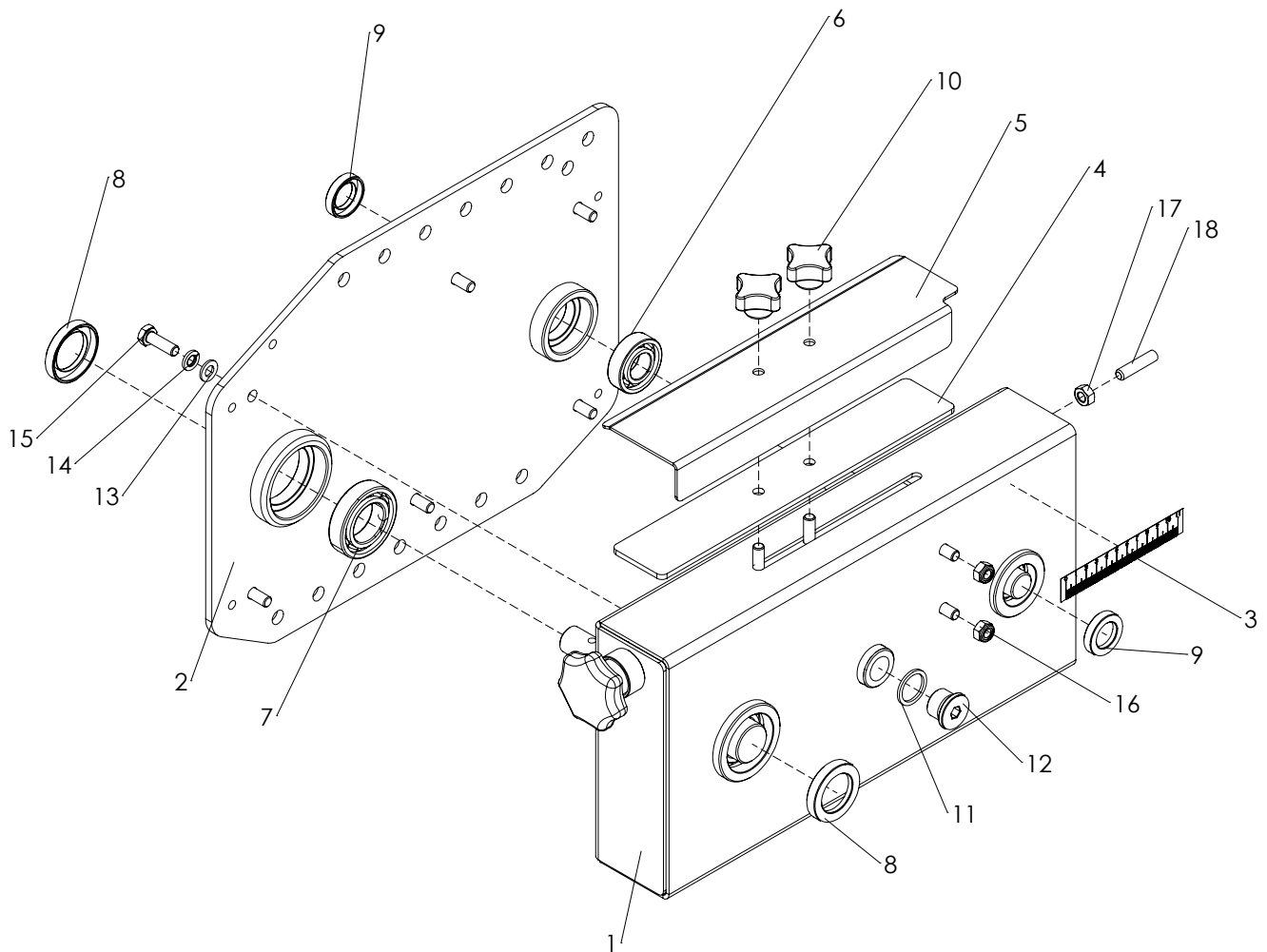
1. Put sealing paste (Loctite 5970) on the gearbox housing according to the closed line as shown on the pictures below.
2. Make sure to put sealing paste around the threaded holes.
3. Make sure to clean the edges from excess sealant.



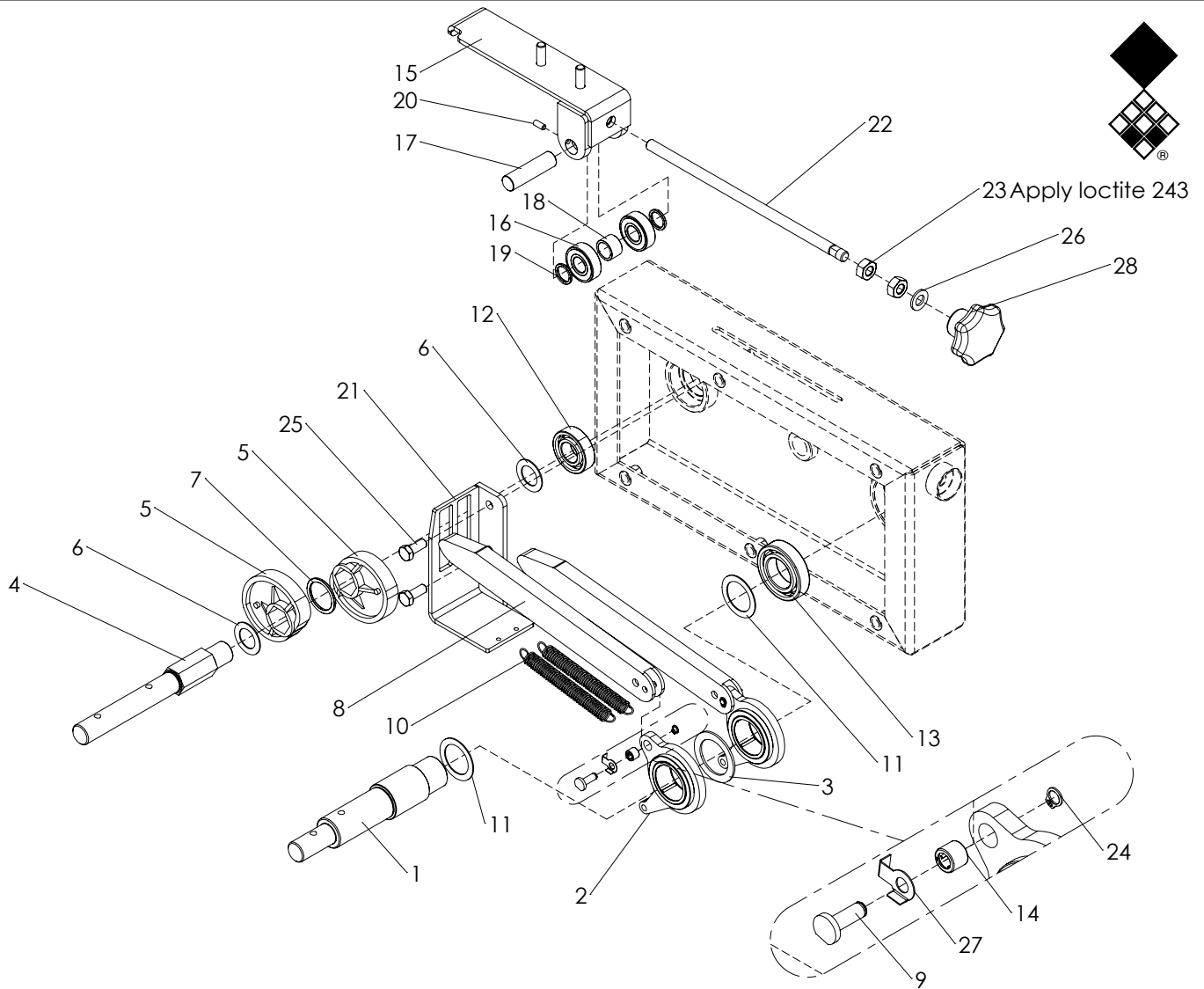
Apply Loctite 5970 (acid free sealing paste)



Apply Loctite 5970 (acid free sealing paste)



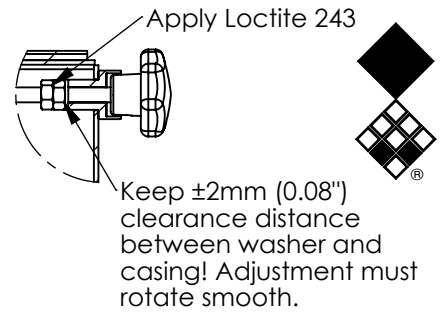
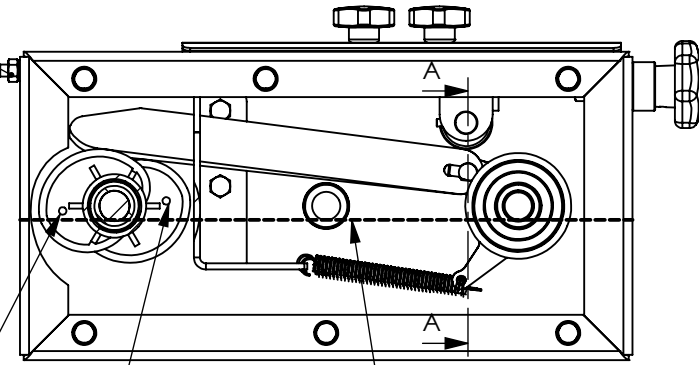
ITEM	PART NUMBER	DESCRIPTION	REMARKS	QUA
1	470.034.052	Gearbox housing		1
2	470.064.004	Gearbox lid		1
3	922.340.014	Gauge decall		1
4	444.032.900	Slider seal		1
5	468.022.900	Indicator		1
6	711.200.120	Bearing 6004		1
7	711.300.132	Bearing 6006		1
8	762.300.080	Oil seal 30-45-8		2
9	762.200.070	Oil seal 20-32-7		2
10	836.080.402	Closed Knob M8 - Din 6335		2
11	874.210.020	Copper washer 1_2		1
12	549.210.200	Blind plug G1/2		1
13	864.080.030	Washer M8 - ISO 7089		6
14	866.080.020	Spring Washer M8 - DIN 127		6
15	804.080.250	Bolt M8 x 25 - ISO 4017		6
16	830.080.080	Self Lock Nut M8 - ISO 10511		2
17	826.080.080	Nut M8 - DIN 934		1
18	818.080.350	Set screw M8x35 - DIN 913		1
	623.246.405	Gearbox complete		



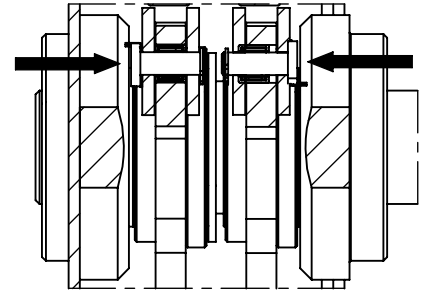
ITEM	PART NUMBER	DESCRIPTION	REMARKS	QUA
1	422.351.382	Shaft		1
2	498.083.101	Lever with bearing		2
3	444.020.500	Washer		1
4	422.242.020	Shaft		1
5	444.200.730	Excenter		2
6	868.032.100	Shim Ø20xØ32x1.0 DIN988	Quantity depending on clearance	
7	406.280.030	Spacer		1
8	464.152.600	Swing arm		2
9	418.060.190	Pin		2
10	575.010.800	Spring		2
11	868.042.100	Shim Ø30xØ42x1.0 DIN988	Quantity depending on clearance	
12	711.200.120	Bearing 6004		1
13	711.300.132	Bearing 6006		1
14	721.060.080	Bearing HK0608		2
15	470.041.980	Slider bracket		1
16	713.150.110	Bearing 6202-LLU		2
17	414.150.550	Shaft		1
18	406.150.132	Bush		1
19	406.150.020	Bush		2
20	818.050.120	Set screw M5 x 12 - DIN 913		2
21	470.041.190	Guide		1
22	852.102.500	Threaded rod M10x250		1
23	826.100.100	Nut M10 - DIN 934		2
24	870.006.070	Circlip d=6 - DIN 471		2
25	804.080.200	Bolt M8 x 20 - ISO 4017		2
26	864.100.030	Washer M10 - ISO 7089		1
27	874.060.240	Lock washer		2
28	836.100.630	Knob M10 with set screw		1

**Timing, Spindle adjustment and Grease level**

Adjust till max. output is 4:1



**SECTION A-A**  
Place pins from correct side and fold lock plate.

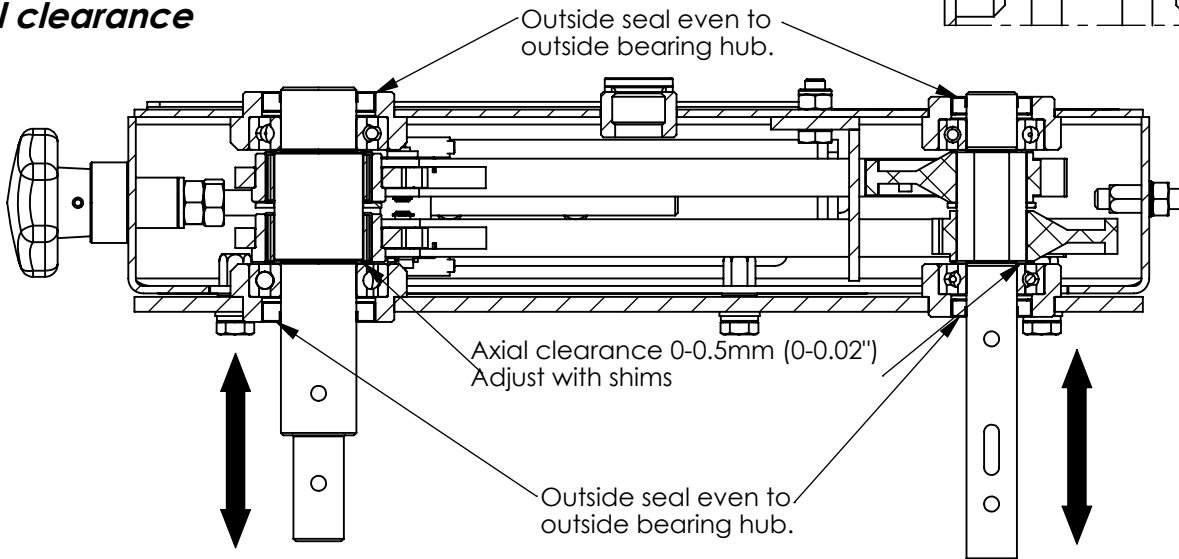


Warning! Make sure the excenters are positioned correct: Fill gearbox with ±2.8kg (6.17lbs.) EP0 grease Fill till level line (Bottom level plug)

- The nodge has to be faced outwards.
- Timing: 180° shifted from each other.

If not correctly installed a shocked rotation will occur at the output shaft.

**Axial clearance**



**Sealing plan**

1. Place sealing paste (Loctite 5970) on gearbox housing as shown in the pictures below. When the guide (1) is removed also apply sealant to the bolts.
2. Place gearbox lid on gearbox housing.
3. Fill bolt holes with silicone sealing before mounting the bolts of the gearbox lid.
4. Make sure to clean the edges of excess sealant.

