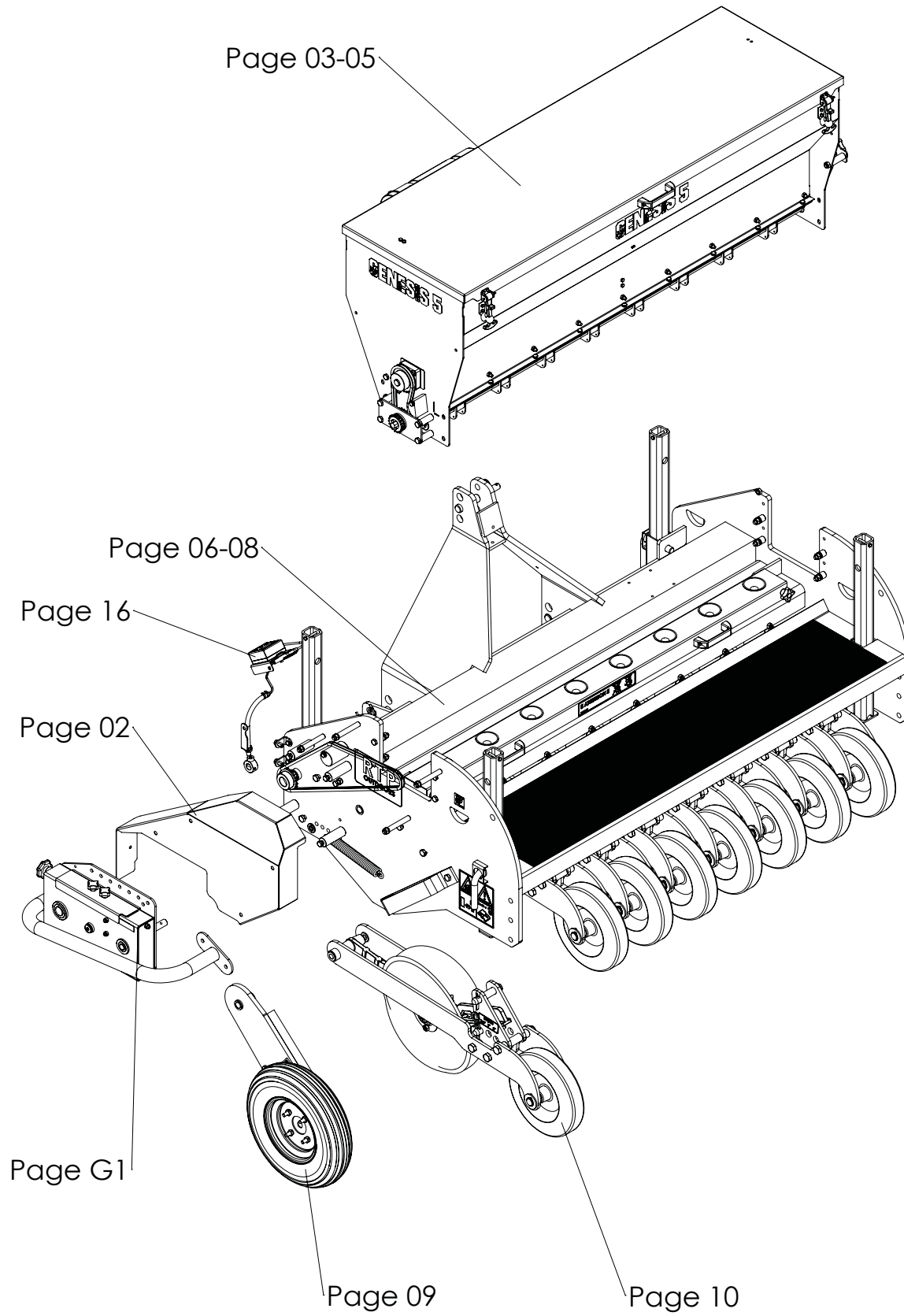


# Parts manual

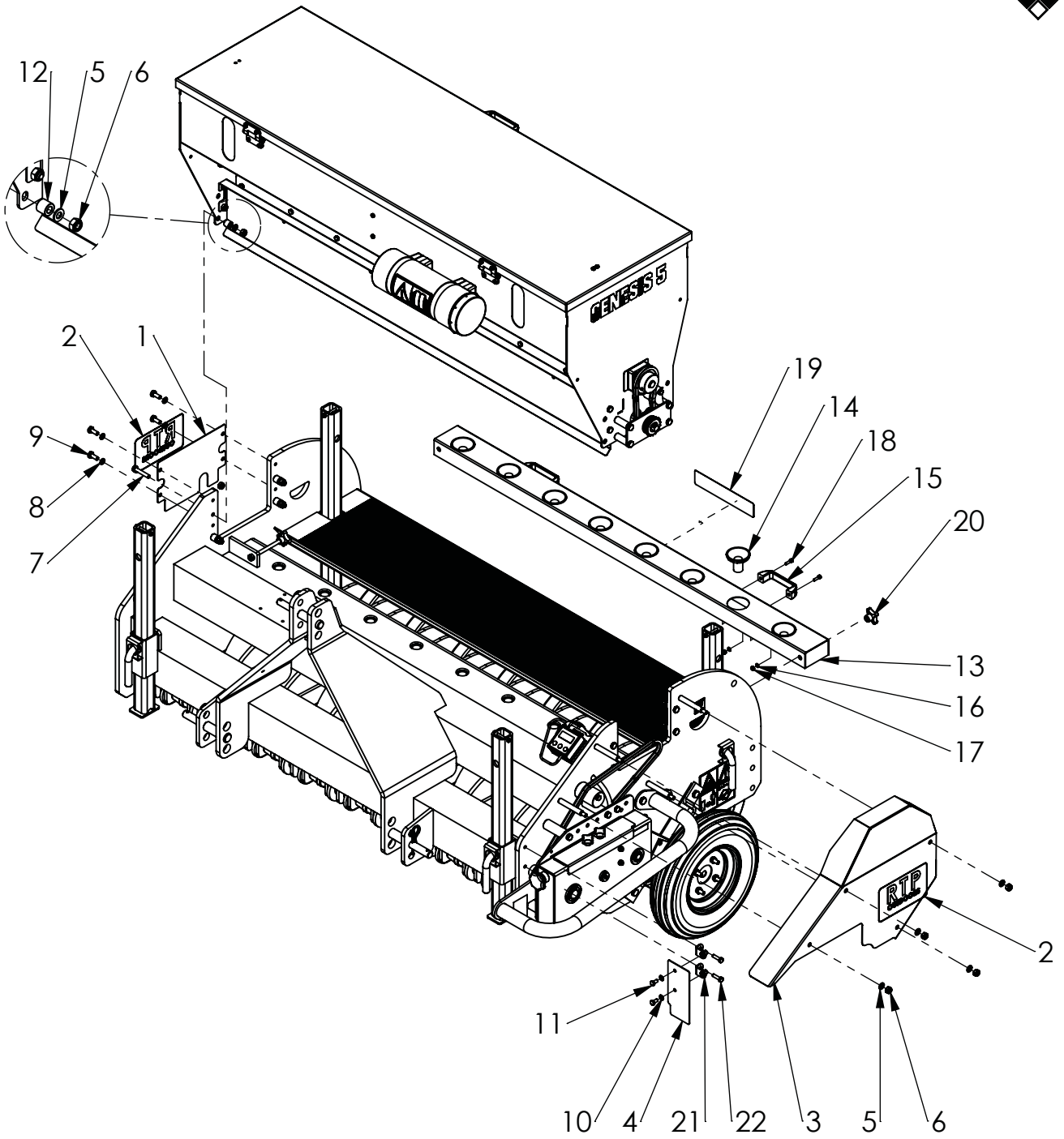
Genesis 5-8



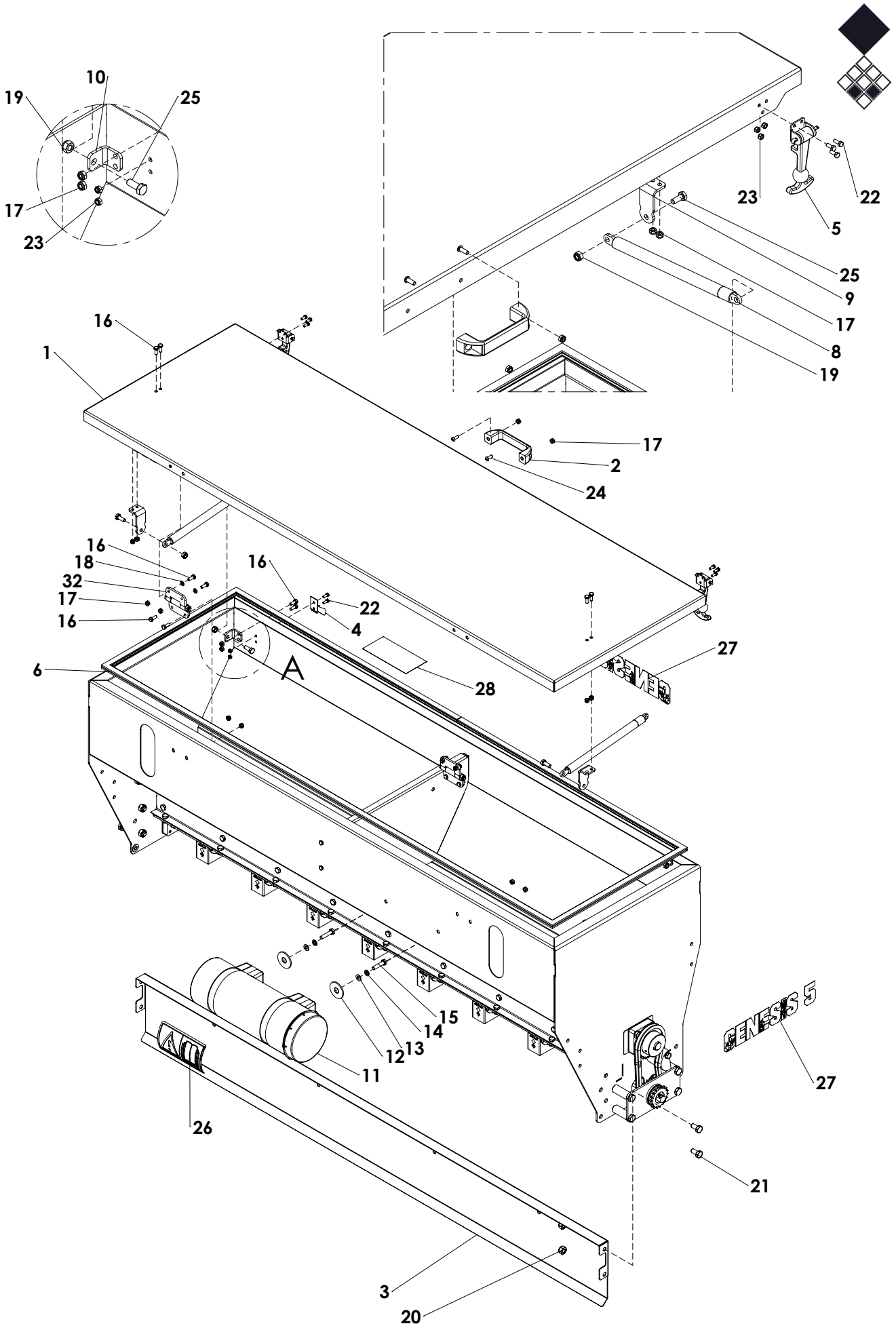




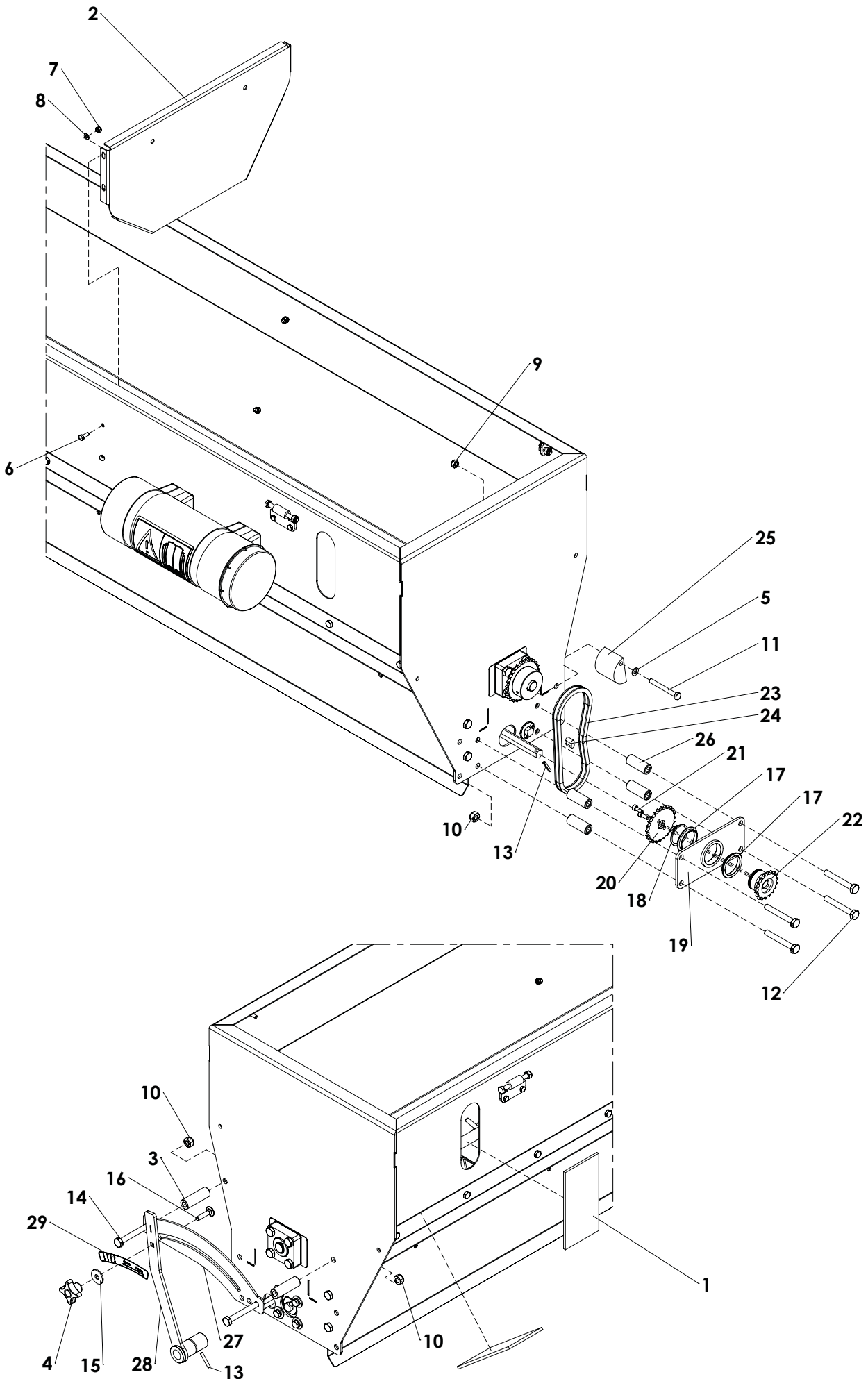
Optional:  
Coulter knife kit : Page 11  
Bogy kit : Page 12-15



ITEM	PART NUMBER	DESCRIPTION	REMARKS	Genesis 5	Genesis 8
1	468.022.604	Cover plate		1	1
2	922.260.414	Label RTP Outdoors white		2	2
3	456.068.010	Cover genesis		1	1
4	468.021.906	Cover plate		1	1
5	864.100.030	Washer M10 - ISO 7089		12	12
6	830.100.100	Self Lock Nut M10 - ISO 10511		12	12
7	802.100.550	Bolt M10 x 55 - ISO 4014		8	8
8	866.100.020	Spring Washer M10 - DIN 127		4	4
9	804.100.250	Bolt M10 x 25 - ISO 4017		4	4
10	864.080.030	Washer M8 - ISO 7089		2	2
11	804.080.160	Bolt M8 x 16 - ISO 4017		2	2
12	402.100.182	Distance bush		8	8
13	478.080.915	Funnel frame	Genesis 5	1	0
	478.080.923	Funnel frame	Genesis 8	0	1
14	444.650.560	Funnel		8	13
15	444.151.250	Handle		2	2
16	864.060.030	Washer M6 - ISO 7089		4	4
17	830.060.060	Self Lock Nut M6 - ISO 10511		4	4
18	814.060.200	Bolt M6 x 20 - DIN 912		4	4
19	922.280.000	Decall funnel		1	1
20	836.100.260	Knop M10 - Din 6335		2	2
21	464.040.430	Bracket		2	2
22	804.080.300	Bolt M8 x 30 - ISO 4017		2	2



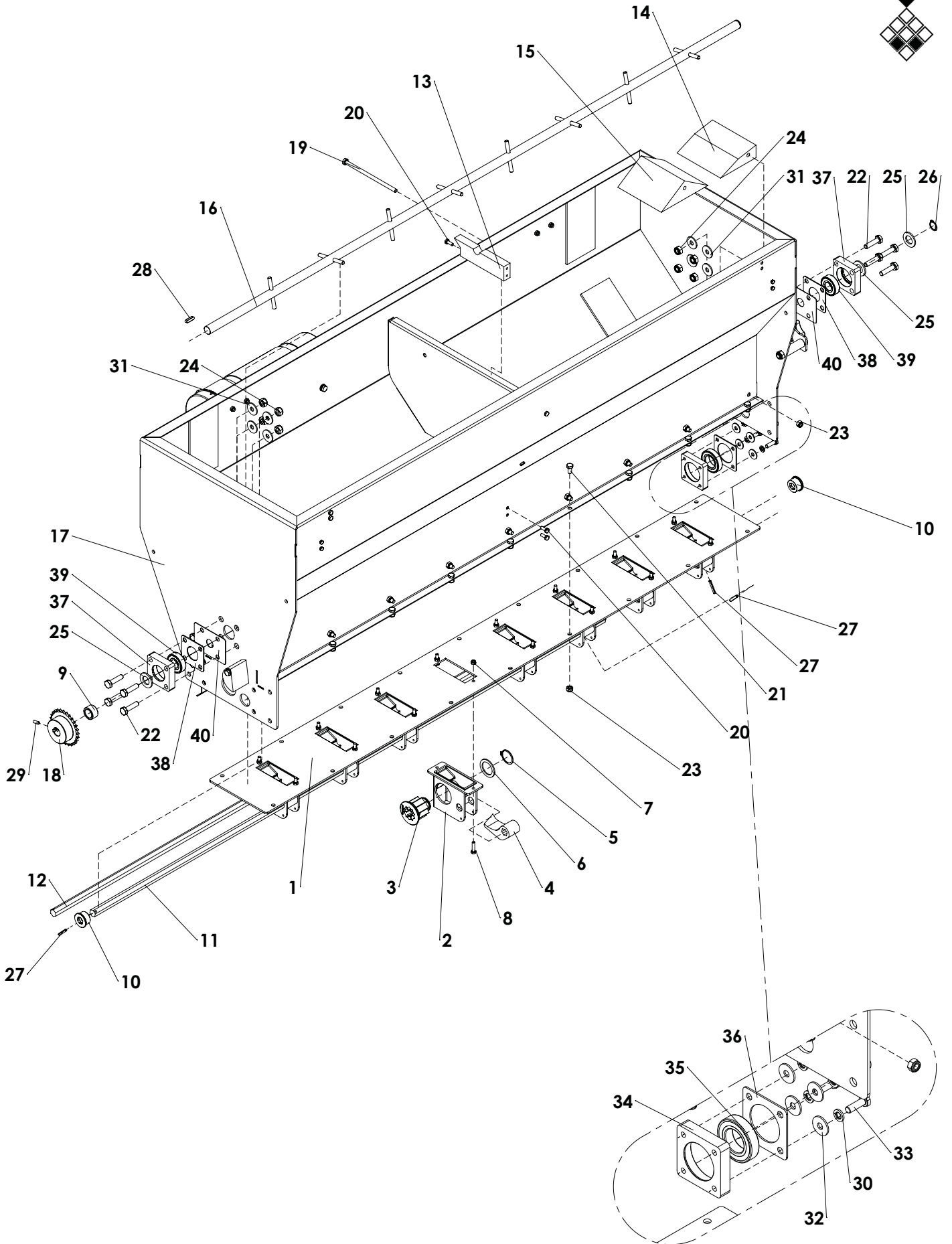
ITEM	PART NUMBER	DESCRIPTION	REMARKS	Genesis 5	Genesis 8
1	456.163.052	Top cover	Genesis 5	1	0
	456.238.052	Top cover	Genesis 8	0	1
2	444.151.250	Handle		1	0
3	469.029.160	Cover plate	Genesis 5	1	0
	468.029.240	Cover plate	Genesis 8	0	1
4	590.650.000	Bracket for latch	Set with lock	2	2
5	590.650.000	Rubber lock assy	Set with bracket	2	2
6	446.109.400	Rubber U-seal 1-4mm L=4030	Genesis 5	1	0
	446.109.550	Rubber U-seal 1-4mm L=5560	Genesis 8	0	1
7	899.100.634	Hinge		2	3
8	571.224.852	Gas strut L=485/stroke=200 F=500		2	2
9	468.040.654	Support L=65mm		2	2
10	468.040.302	Support L=30mm		2	2
11	444.803.100	Toolbox Complete		1	1
12	864.140.031	Large washer M14 - DIN 9021		2	2
13	864.080.030	Washer M8 - ISO 7089		2	2
14	866.080.020	Spring Washer M8 - DIN 127		2	2
15	804.080.350	Bolt M8 x 35 - ISO 4017		2	2
16	804.060.160	Bolt M6 x 16 - ISO 4017		16	20
17	830.060.060	Self Lock Nut M6 - ISO 10511		18	22
18	864.060.030	Washer M6 - ISO 7089		4	6
19	830.080.080	Self Lock Nut M8 - ISO 10511		4	4
20	830.100.100	Self Lock Nut M10 - ISO 10511		4	4
21	804.100.200	Bolt M10 x 20 - ISO 4017		4	4
22	804.050.120	Bolt M5 x 12 - ISO 4017		8	8
23	830.050.050	Self Lock Nut M5 - ISO 10511		8	8
24	814.060.160	Bolt M6 x 16 - ISO 7380		2	2
25	804.080.200	Bolt M8 x 20 - ISO 4017		4	4
26	900.280.402	Safety decall manual		1	1
27	922.260.505	Label Genesis 5	Genesis 5	3	0
	922.260.418	Label Genesis 8	Genesis 8	0	3
28	924.280.000	Decal seed hopper		1	1



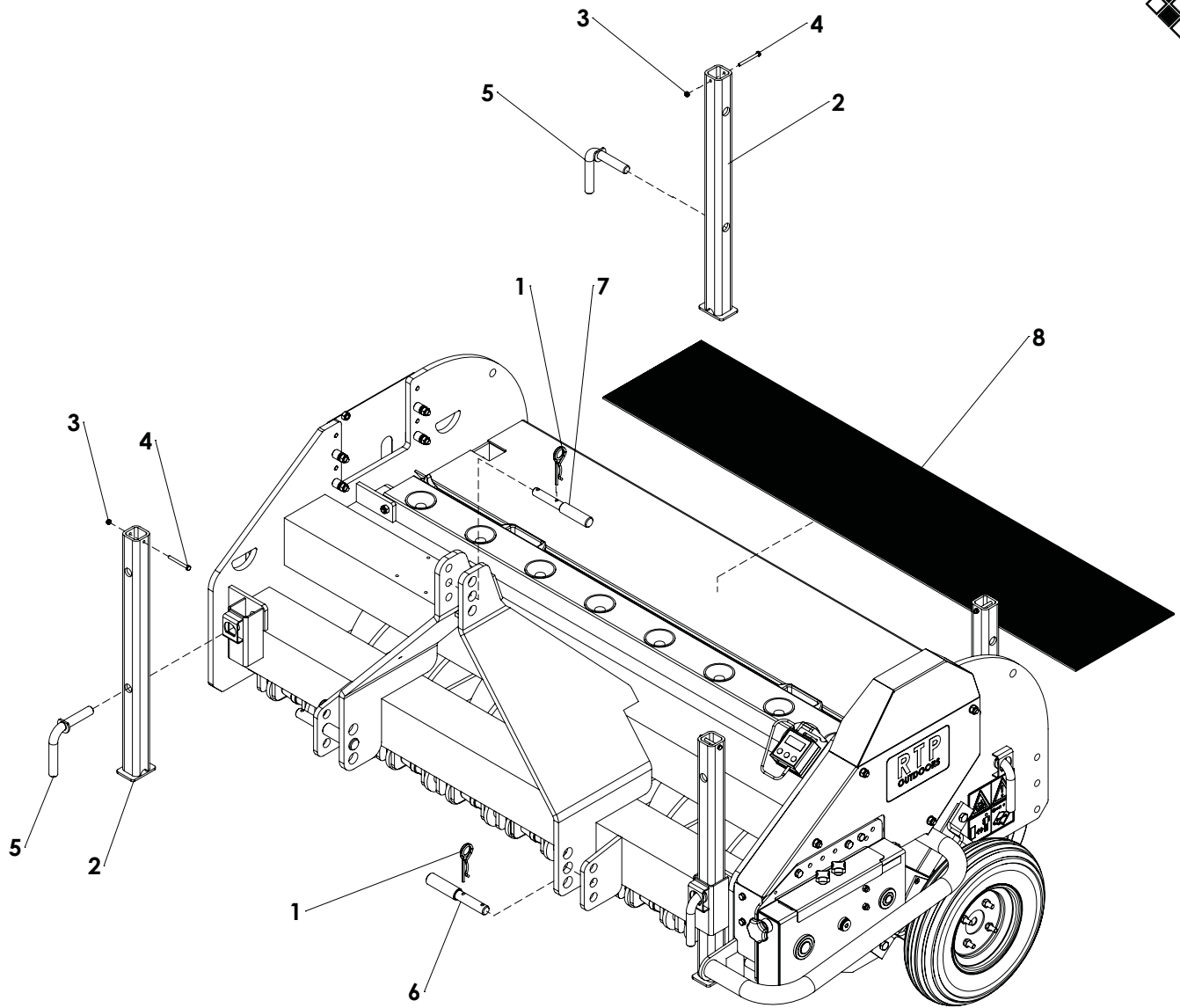


ITEM	PART NUMBER	DESCRIPTION	REMARKS	Genesis 5	Genesis 8
1	444.051.802	Window		4	4
2	468.024.950	Center plate		1	1
3	406.110.600	Distance bush Ø20/Ø10.5 L=60		2	2
4	836.080.260	Knop M8 - Din 6335		1	1
5	864.080.030	Washer M8 - ISO 7089		1	1
6	804.060.160	Bolt M6 x 16 - ISO 4017		5	5
7	830.060.060	Self Lock Nut M6 - ISO 10511		5	5
8	864.060.030	Washer M6 - ISO 7089		5	5
9	830.080.080	Self Lock Nut M8 - ISO 10511		1	1
10	830.100.100	Self Lock Nut M10 - ISO 10511		6	6
11	802.080.700	Bolt M8 x 70 - ISO 4014		1	1
12	802.100.750	Bolt M10 x 75 - ISO 4014		4	4
13	878.050.320	Roll pin Ø5x32		2	2
14	804.100.800	Bolt M10 x 80 - ISO 4017		2	2
15	864.100.031	Large washer M10 - DIN 9021		1	1
16	820.080.350	MH Bolt M8 x 35 ISO 8677		1	1
17	732.400.070	Bearing bush		1	1
18	870.040.180	Circlip d=40 - DIN 471		1	1
19	470.121.500	Gear base		1	1
20	635.000.774	Sprocket 3/8" (06B) simplex 24Z flat		1	1
21	814.060.150	Bolt M6 x 16 - DIN 912		2	2
22	635.000.602	Sprocket 3/8"(06B) simplex 18Z special		1	1
23	631.000.605	Chain 3/8" 06B L=605		1	1
24	638.090.090	Chain connector 3_8 inch 6B Simplex		1	1
25	444.500.600	Chain Tensioner		1	1
26	406.110.500	Distance bush Ø20/Ø10.5 L=50		4	4
27	464.041.752	Guide strip		1	1
28	464.063.134	Valve adjustment		1	1
29	924.340.001	Decall adjustment valve		1	1

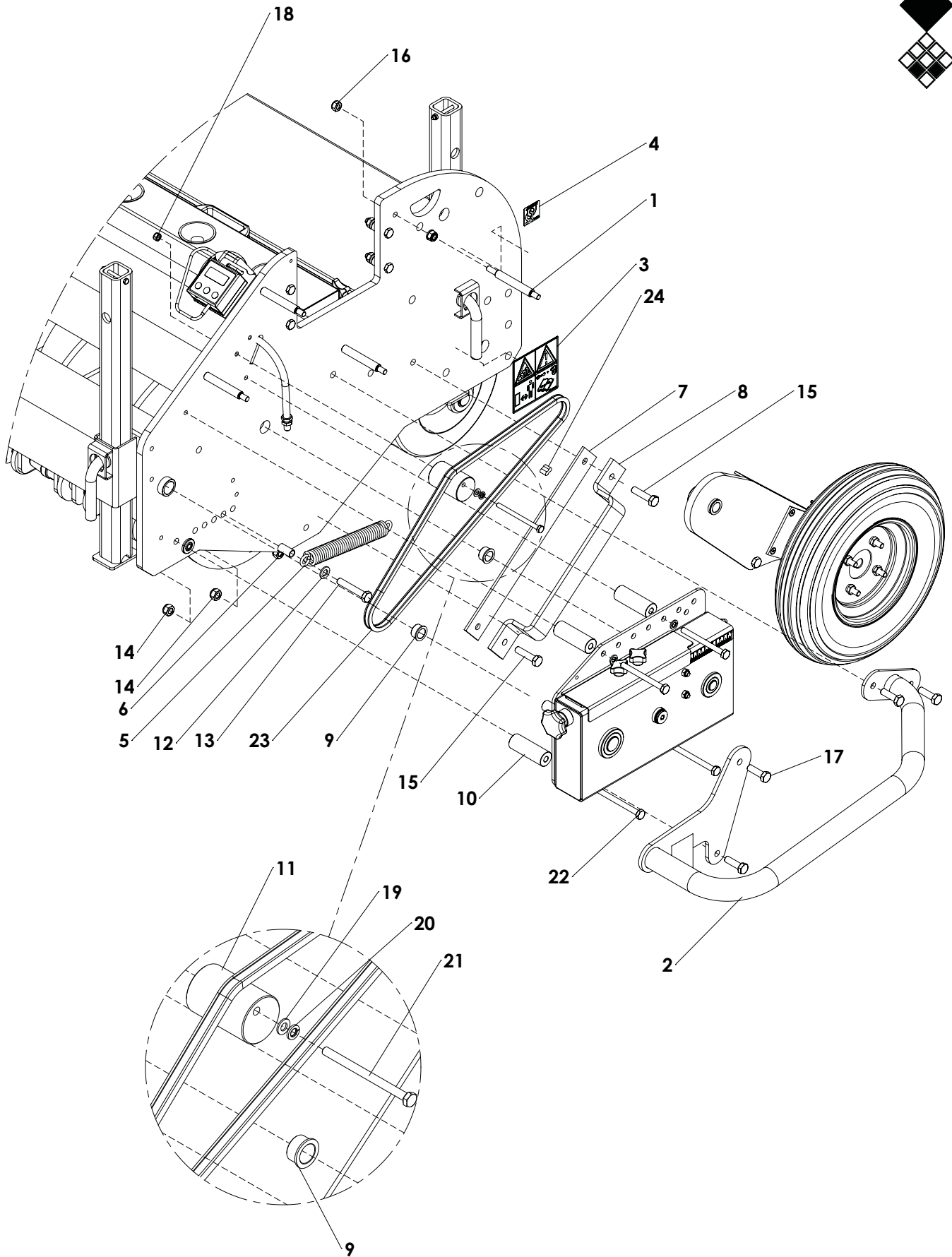
1:1



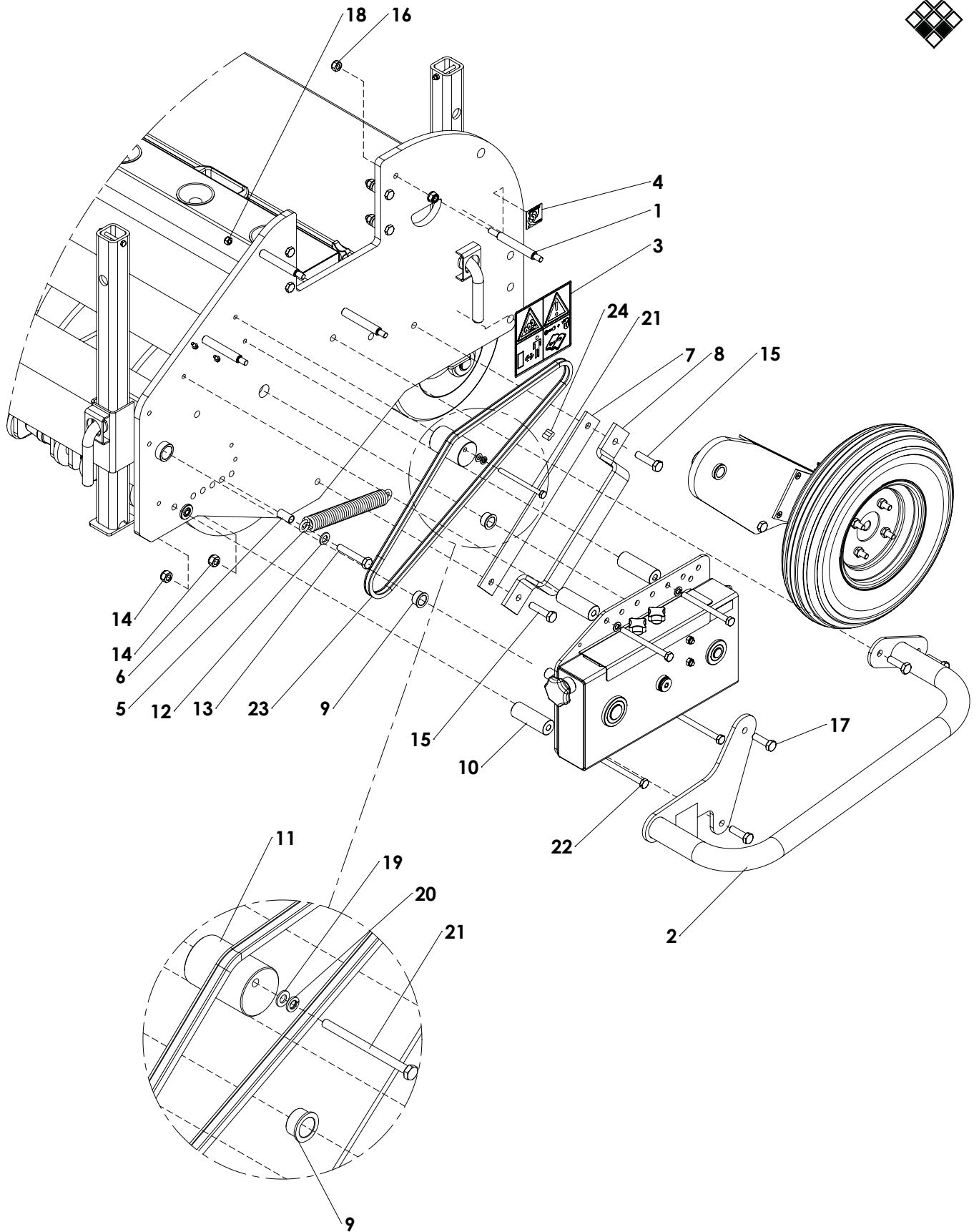
ITEM	PART NUMBER	DESCRIPTION	REMARKS	Genesis 5	Genesis 8
1	468.049.163	Plate	Genesis 5	1	0
	468.049.235	Plate	Genesis 8	0	1
2	444.050.133	Seed element casing	Qua per element	1	1
3	444.058.510	Seed element rotor	Qua per element	1	1
4	444.034.760	Seed element valve	Qua per element	1	1
5	870.032.160	Circlip d=32 - DIN 471	Qua per element	1	1
6	412.020.450	Washer	Qua per element	1	1
7	830.060.060	Self Lock Nut M6 - ISO 10511		16	26
8	804.060.250	Bolt M6 x 25 - ISO 4017		16	26
9	406.210.180	Distance bush D30/D21 L=17.5		1	1
10	410.160.180	Bush		2	2
11	422.169.164	Valveshaft L=1641	Genesis 5	1	0
	422.169.240	Shaft	Genesis 8	0	1
12	422.169.170	Hexagon Shaft	Genesis 5	1	0
	422.169.246	Haxagon Shaft	Genesis 8	0	1
13	444.201.170	Guide Block		1	1
14	444.600.870	Divider side		2	2
15	444.601.100	Divider block		7	12
16	474.809.168	Agitator shaft	Genesis 5	1	0
	474.809.240	Agitator shaft	Genesis 8	0	1
17	494.161.050	Seed hopper	Genesis 5	1	0
	494.237.050	Seed hopper	Genesis 8	0	1
18	635.000.900	Sprocket 3/8" (06B) simplex 28Z Ø15		1	1
19	802.081.600	Bolt M8 x 160 - ISO 4014		9	14
20	804.060.160	Bolt M6 x 16 - ISO 4017		3	3
21	804.080.160	Bolt M8 x 16 - ISO 4017		18	28
22	804.100.400	Bolt M10 x 40 - ISO 4017		8	8
23	830.080.080	Self Lock Nut M8 - ISO 10511		27	42
24	830.100.100	Self Lock Nut M10 - ISO 10511		8	8
25	864.200.030	Washer M20 - ISO 7089		3	3
26	870.020.120	Circlip d=20 - DIN 471		1	1
27	878.050.320	Roll pin Ø5x32		3	3
28	884.060.250	Key 6x6x25 - DIN 6885		1	1
29	818.060.160	Set screw M6 x 16 Din 913Spring		1	1
30	866.080.020	Washer M8 - DIN 127 Large washer		4	4
31	864.100.031	M10 - DIN 9021W		8	8
32	864.080.043	Washer M8 - DIN 7349		4	4
33	804.080.250	Bolt M8 x 25 - ISO 4017		4	4
34	468.150.702	Bearing block		1	1
35	713.300.130	Bearing 6006 LLU		1	1
36	468.020.708	Cover plate large hole		1	1
37	468.180.700	Bearing block		2	2
38	468.020.704	Cover plate		2	2
39	713.200.140	Bearing 6204-C-2HRS		2	2
40	468.011.004	Cover plate		2	2



ITEM	PART NUMBER	DESCRIPTION	REMARKS	Genesis 5	Genesis 8
1	523.051.000	R-clip Round 5, DIN 11024		3	3
2	462.050.655	Leg overseeder		4	4
3	830.060.060	Self Lock Nut M6 - ISO 10511		4	4
4	802.060.600	Bolt M6 x 60 - ISO 4014		4	4
5	474.201.320	Lock pin		4	4
6	521.221.600	3-point pin		2	2
7	521.191.600	Top link pin OS		1	1
8	446.039.162	Rubber grip plate	Genesis 5	1	0
	446.039.230	Rubber grip plate	Genesis 8	0	1



ITEM	PART NUMBER	DESCRIPTION	REMARKS	Genesis 5	Genesis 8
1	416.151.350	Stud Ø15 L=134		4	4
2	478.241.741	Gearbox protection		1	1
3	921.280.402	Safety decall VS		2	2
4	922.340.008	Decall fixation point		3	3
5	575.302.250	Spring wheelaxle		1	1
6	406.150.300	Distance bush spring wheel		1	1
7	444.053.802	Guide bar sideplate		1	1
8	466.083.952	Guide swingarm		1	1
9	442.200.150	Bearing bush gearaxle		2	2
10	406.110.840	Spacer		4	4
11	444.500.750	Spanner		1	1
12	864.120.030	Washer M12 - ISO 7089		1	1
13	802.120.700	Bolt M12 x 70 - ISO 4014		1	1
14	830.120.120	Self Lock Nut M12 - ISO 10511 Class 10.9		7	7
15	802.120.500	Bolt M12 x 50 - ISO 4014 - 10.9		2	2
16	830.100.100	Self Lock Nut M10 - ISO 10511		6	6
17	804.120.400	Bolt M12 x 40 - ISO 4017		4	4
18	830.080.080	Self Lock Nut M8 - ISO 10511		1	1
19	864.080.030	Washer M8 - ISO 7089		1	1
20	866.080.020	Spring Washer M8 - DIN 127		1	1
21	802.081.100	Bolt M8 x 110 - ISO 4014		1	1
22	802.101.100	Bolt M10 x 110 - ISO 4014		4	4
23	631.011.257	Chain 3/8" L=1257.3mm		1	1
24	638.090.090	Chain connector 3_8 inch 6B Simplex		1	1

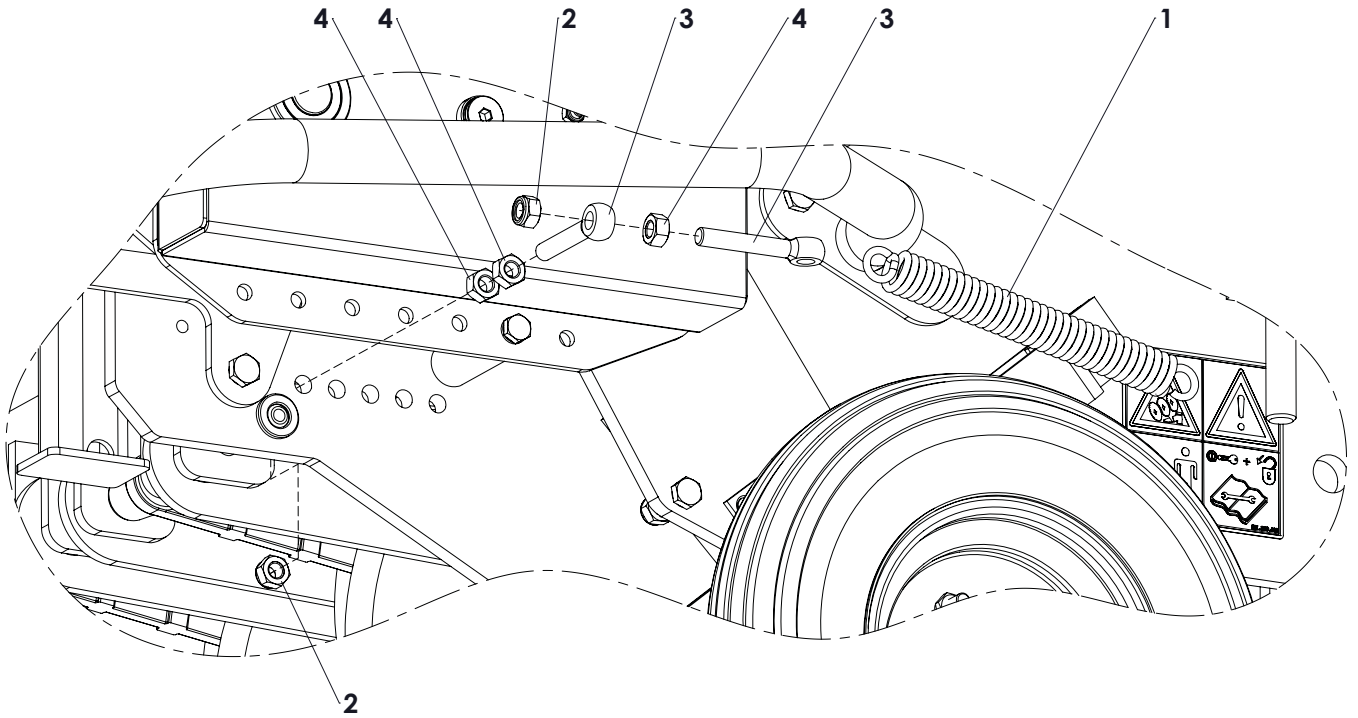




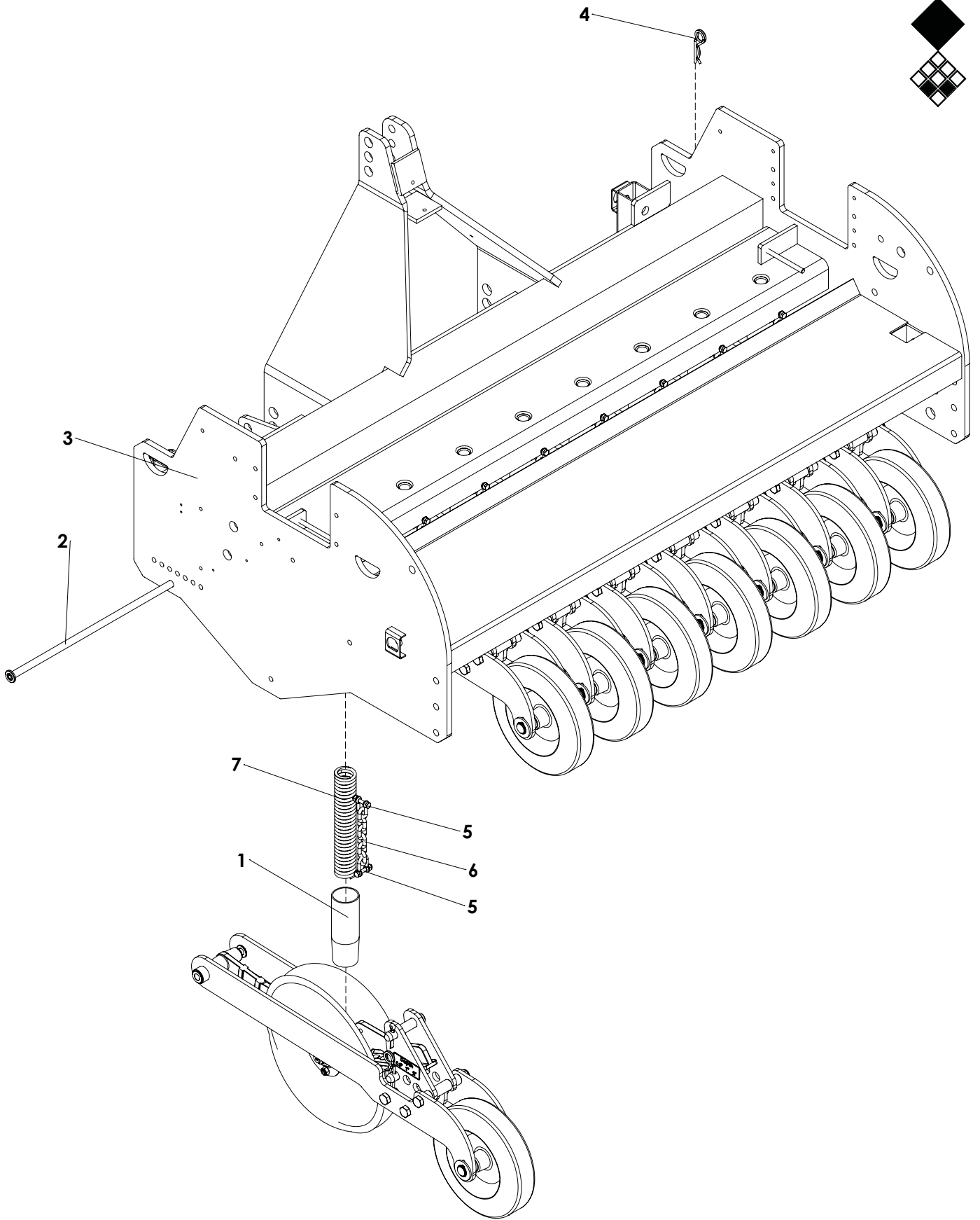
ITEM	PART NUMBER	DESCRIPTION	REMARKS	Genesis 5	Genesis 8
1	416.151.350	Stud Ø15 L=134		4	4
2	478.241.741	Gearbox protection		1	1
3	921.280.402	Safety decall VS		2	2
4	922.340.008	Decall fixation point		3	3
5	575.302.250	Spring wheelaxle		1	1
6	406.150.300	Distance bush spring wheel		1	1
7	444.053.800	Guide bar sideplate		1	1
8	466.083.950	Guide swingarm		1	1
9	442.200.150	Bearing bush gearaxle		2	2
10	406.110.840	Spacer		4	4
11	444.500.750	Spanner		1	1
12	864.120.030	Washer M12 - ISO 7089		1	1
13	802.120.750	Bolt M12 x 75 - ISO 4014		1	1
14	830.120.120	Self Lock Nut M12 - ISO 10511		6	6
15	802.120.500	Bolt M12 x 50 - ISO 4014		2	2
16	830.100.100	Self Lock Nut M10 - ISO 10511		8	8
17	804.120.400	Bolt M12 x 40 - ISO 4017		4	4
18	830.080.080	Self Lock Nut M8 - ISO 10511		1	1
19	864.080.030	Washer M8 - ISO 7089		1	1
20	866.080.020	Spring Washer M8 - DIN 127		1	1
21	802.081.100	Bolt M8 x 110 - ISO 4014		1	1
22	802.101.200	Bolt M10 x 120 - ISO 4014		4	4
23	631.011.257	Chain 3/8" L=1257.3mm		1	1
24	638.090.090	Chain connector 3_8 inch 6B Simplex		1	1



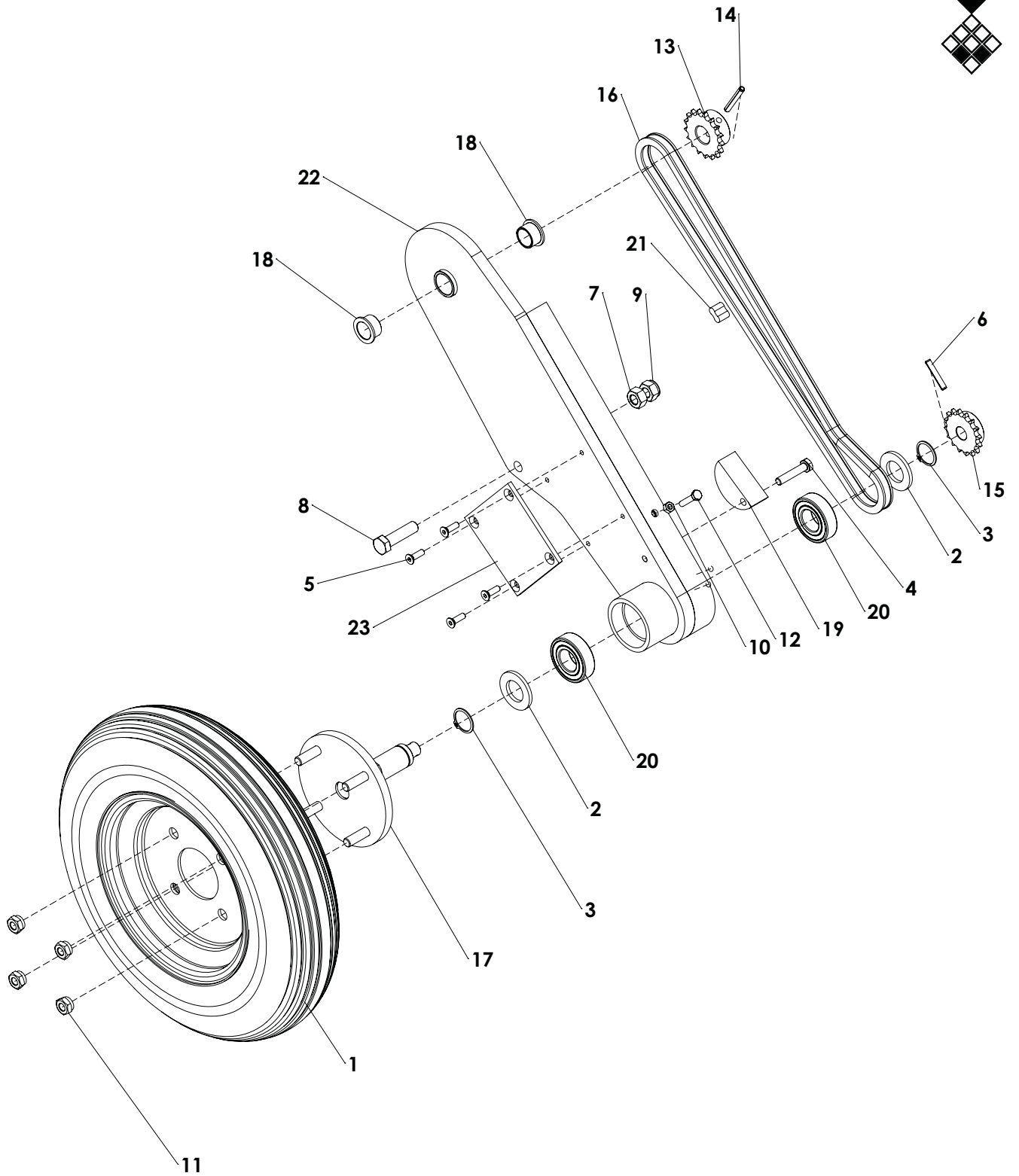
check your machine which spring tensioner has been used



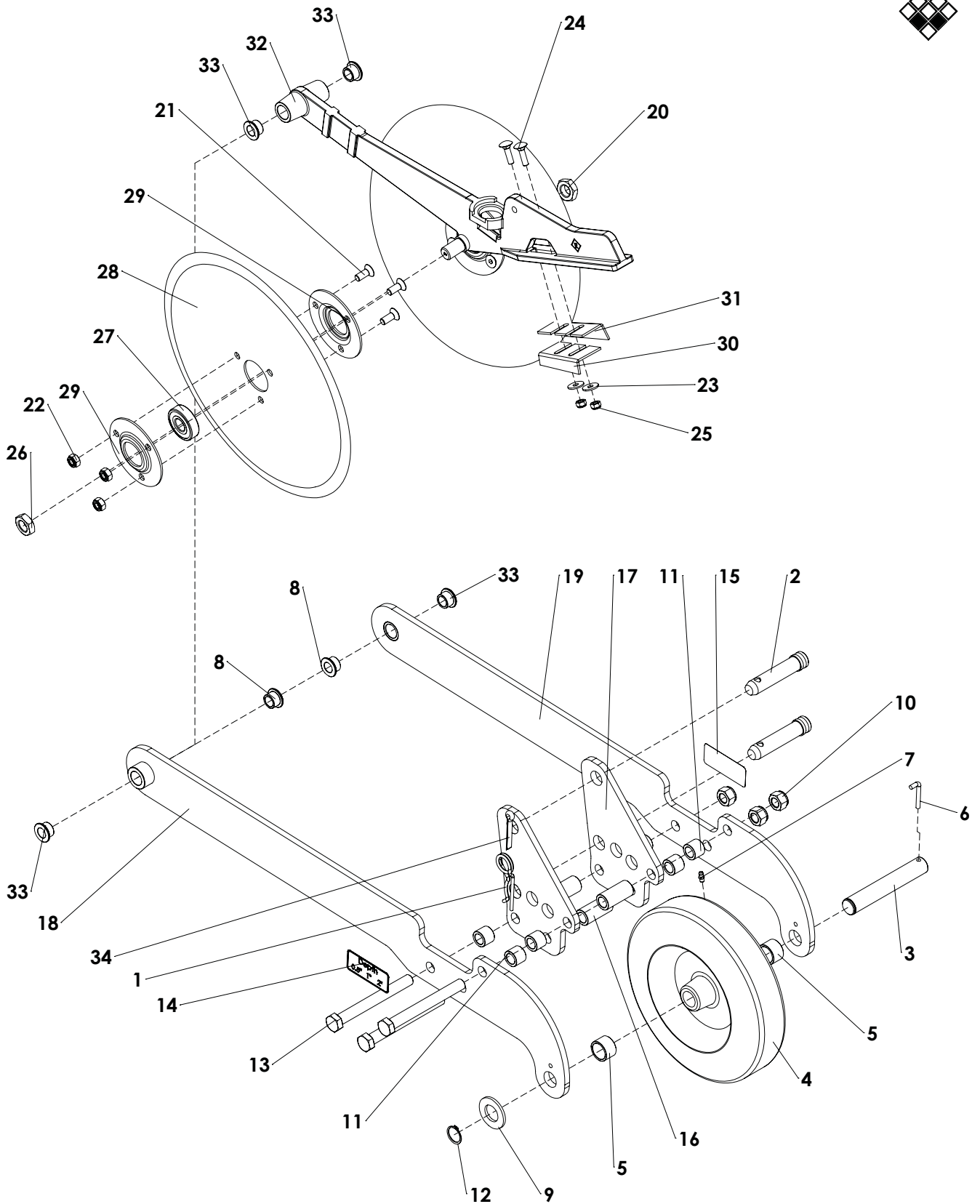
ITEM	PART NUMBER	DESCRIPTION	REMARKS	QUA
1	575.302.250	Spring wheelaxle		1
2	830.120.120	Self Lock Nut M12 - ISO 10511 Class 10.9		8
3	822.120.800	Eye Bolt M12x80 DIN 444LB (full thread)		2
4	826.120.120	Nut M12 - DIN 934		3



ITEM	PART NUMBER	DESCRIPTION	REMARKS	Genesis 5	Genesis 8
1	444.631.800	Seed guide		8	13
2	474.169.170	Seeding element shaft	Genesis 5	1	0
	474.169.240	Seeding element shaft	Genesis 8	0	1
3	494.106.168	Frame	Genesis 5	1	0
	494.108.244	Frame	Genesis 8	0	1
4	523.051.000	R-clip Round 5, DIN 11024		1	1
5	846.080.250	D-Shackle d=8mm		16	26
6	899.081.520	Chain seeding element 6-links D=8mm L=152 (±6")	Check chain length on machine	8	13
	899.082.000	Chain seeding element 8-links D=8mm L=200 (±7.9")	Check chain length on machine	8	13
7	438.503.960	Compression spring disc assembly		8	13



ITEM	PART NUMBER	DESCRIPTION	REMARKS	QUA
1	511.400.108	Tire 4.00-8/4PU full rubber		1
2	864.240.044	Washer M24 - ISO 7089		2
3	870.025.120	Circlip d=25 - DIN 471		2
4	802.080.400	Bolt M8 x 40 - ISO 4014		1
5	816.060.200	Bolt M6 x 20 - DIN 7991		4
6	878.060.350	Roll Pin 6 x 35 - ISO 8752		1
7	826.120.120	Nut M12 - DIN 934		1
8	802.120.450	Bolt M12 x 45 ISO 4014		1
9	830.120.120	Self Lock Nut M12 - ISO 10511		1
10	826.060.060	Nut M6 - DIN 934		1
11	844.100.100	Wheel nut M10x1.25		4
12	804.060.300	Bolt M6 x 30 - ISO 4017		1
13	635.000.572	Sprocket 3/8" (06B) simplex 17Z		1
14	878.060.450	Roll Pin 6 x 45 - ISO 8752		1
15	635.000.540	Sprocket 3/8" (06B) simplex 16Z		1
16	631.000.978	Chain 3/8" Simplex L=978		1
17	474.251.400	Wheel hub		1
18	442.200.152	Bearing bush swingarm		2
19	444.250.600	Chain tensioner		1
20	713.250.150	Bearing 6205-LLU		2
21	638.090.090	Chain connector 3_8 inch 6B Simplex		1
22	466.155.000	Frame swingarm		1
23	444.051.000	Guide plate swingarm		1



**Elements**

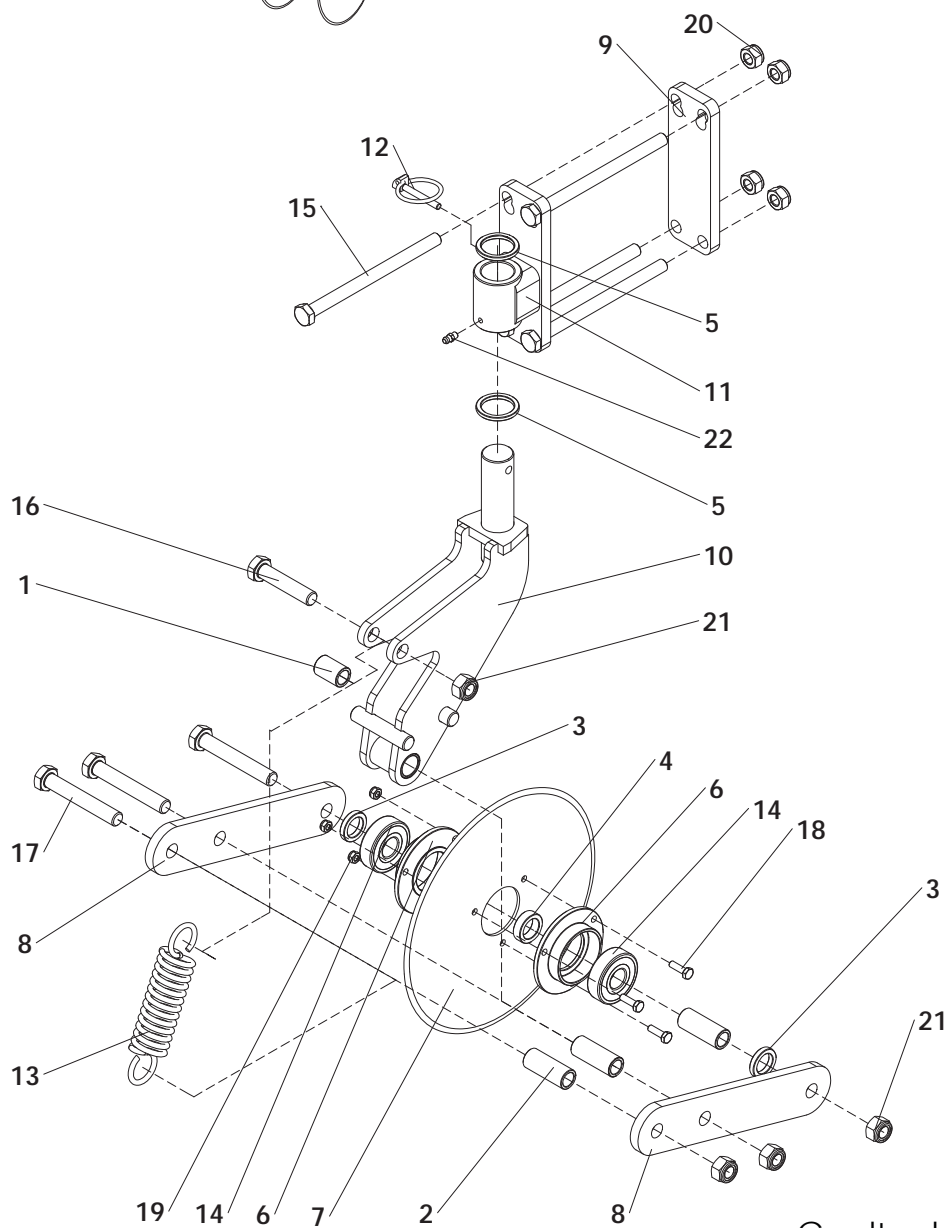
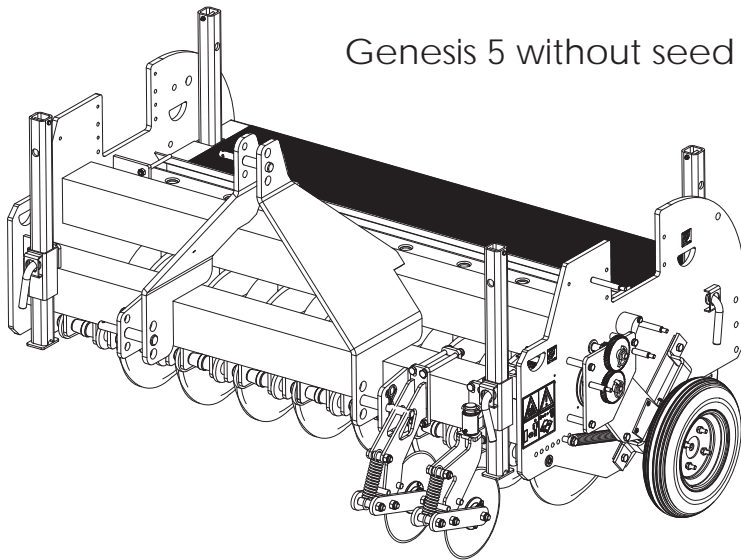
Genesis 5 : 8 pieces  
Genesis 8 : 13 pieces







Genesis 5 without seed hopper

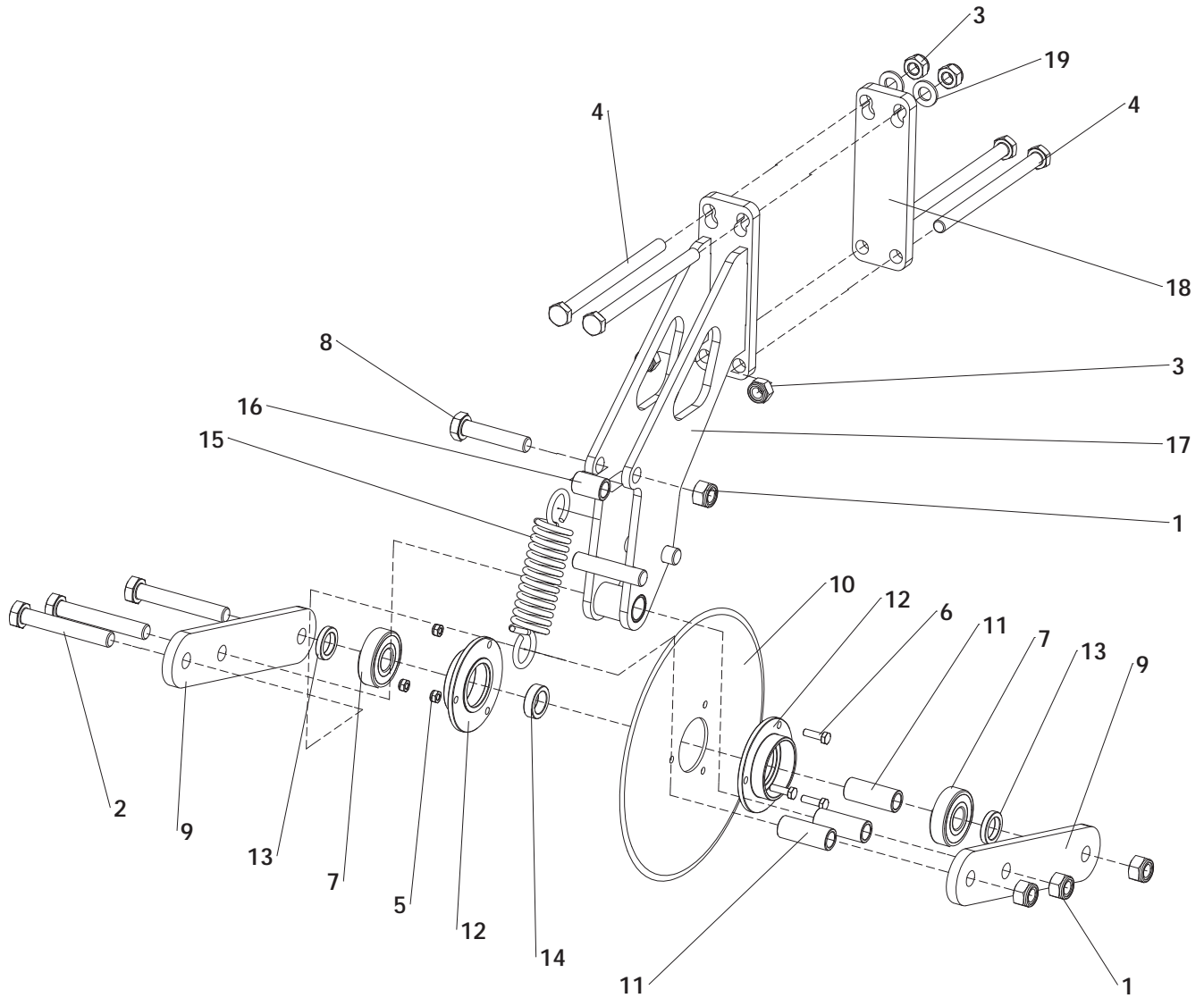


Coultter knife element

- Genesis 3 : 5 pieces
- Genesis 5 : 8 pieces
- Genesis 8 : 13 pieces
- Genesis 10 : 16 pieces

ITEM	PART NUMBER	DESCRIPTION	REMARKS	QUA
1	402.140.290	Distance bush Ø20/Ø14.2 L=29		1
2	402.140.500	Distance bush Ø20/Ø14.2 L=50		3
3	406.210.055	Distance bush Ø30/Ø20.5 L=5.5		2
4	406.210.090	Distance bush Ø30/Ø20.5 L=9		1
5	406.310.040	Ring		2
6	410.520.190	Bearing block		2
7	468.032.502	Disc Ø250/ 3mm		1
8	468.102.600	Arm		2
9	468.121.700	Lock plate		1
10	470.083.100	Pivot frame coulter		1
11	472.451.700	Support bracket		1
12	523.060.320	Linch pin Ø6		1
13	575.041.270	Spring		1
14	713.200.150	Bearing 6304-LLU		2
15	802.121.700	Bolt M12 x 170 - ISO 4014		4
16	802.140.650	Bolt M14 x 65 - ISO 4014		1
17	802.140.900	Bolt M14 x 90 - ISO 4014		3
18	804.060.200	Bolt M6 x 20 - ISO 4017		3
19	830.060.060	Self Lock Nut M6 - ISO 10511		3
20	830.120.120	Self Lock Nut M12 - ISO 10511		4
21	830.140.140	Self Lock Nut M14 - ISO 10511		4
22	880.060.100	Grease nipple M6 DIN 71412A		1
	222.153.000	Coulter kit	Amount for 1 piece	

Quantity per coulter knife element

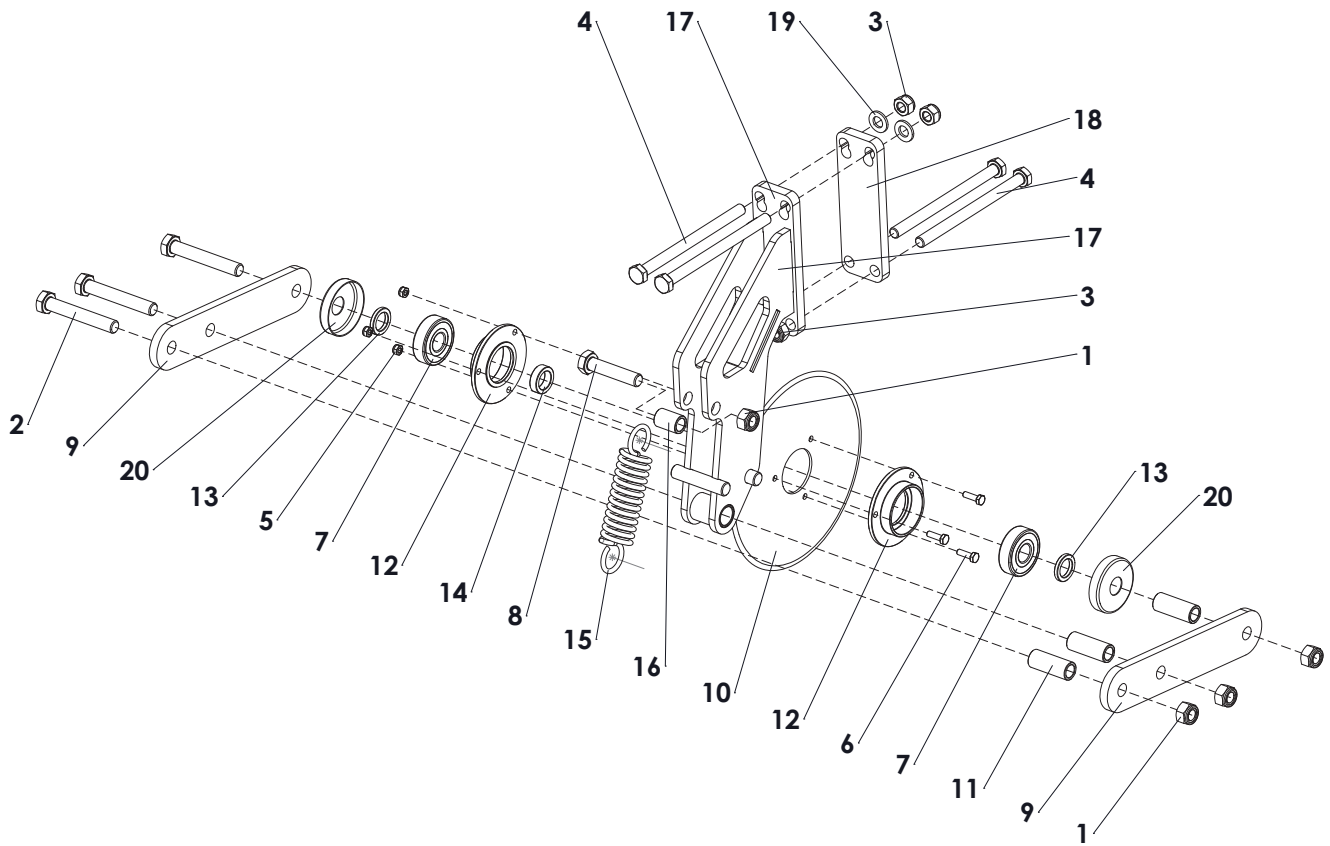


Coultter knife element

- Genesis 3 : 5 pieces
- Genesis 5 : 8 pieces
- Genesis 8 : 13 pieces
- Genesis 10 : 16 pieces

ITEM	PART NUMBER	DESCRIPTION	REMARKS	QUA
1	830.140.140	Self Lock Nut M14 - ISO 10511		4
2	802.140.900	Bolt M14 x 90 - ISO 4014		3
3	830.120.120	Self Lock Nut M12 - ISO 10511		4
4	802.121.700	Bolt M12 x 170 - ISO 4014		4
5	830.060.060	Self Lock Nut M6 - ISO 10511		3
6	804.060.200	Bolt M6 x 20 - ISO 4017		3
7	713.200.150	Bearing 6304-LLU		2
8	802.140.650	Bolt M14 x 65 - ISO 4014		1
9	468.102.600	Arm		2
10	468.032.502	Disc Ø250/ 3mm		1
11	402.140.500	Distance bush Ø20/Ø14.2 L=50		3
12	410.520.190	Bearing block		2
13	406.210.055	Distance bush Ø30/Ø20.5 L=5.5		2
14	406.210.090	Distance bush Ø30/Ø20.5 L=9		1
15	575.041.270	Spring		1
16	402.140.290	Distance bush Ø20/Ø14.2 L=29		1
17	470.083.450	Support bracket		1
18	468.121.700	Lock plate		1
19	864.120.030	Washer M12 - ISO 7089		2
	222.153.010	Fixed coultter kit	Amount for 1 piece	

Quantity per coultter knife element

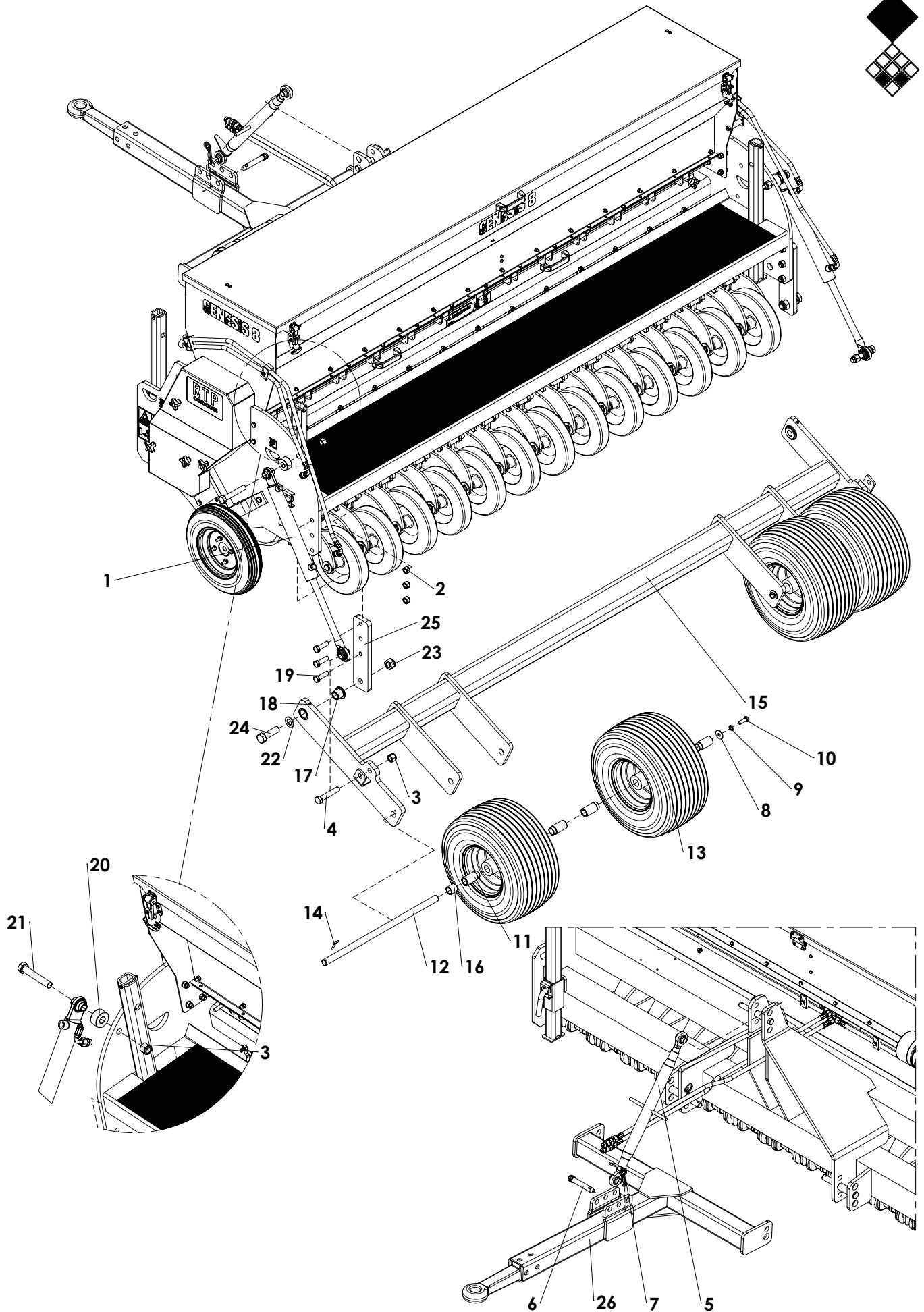


## Couler knife element

Genesis 3 : 5 pieces  
 Genesis 5 : 8 pieces  
 Genesis 8 : 13 pieces  
 Genesis 10 : 16 pieces

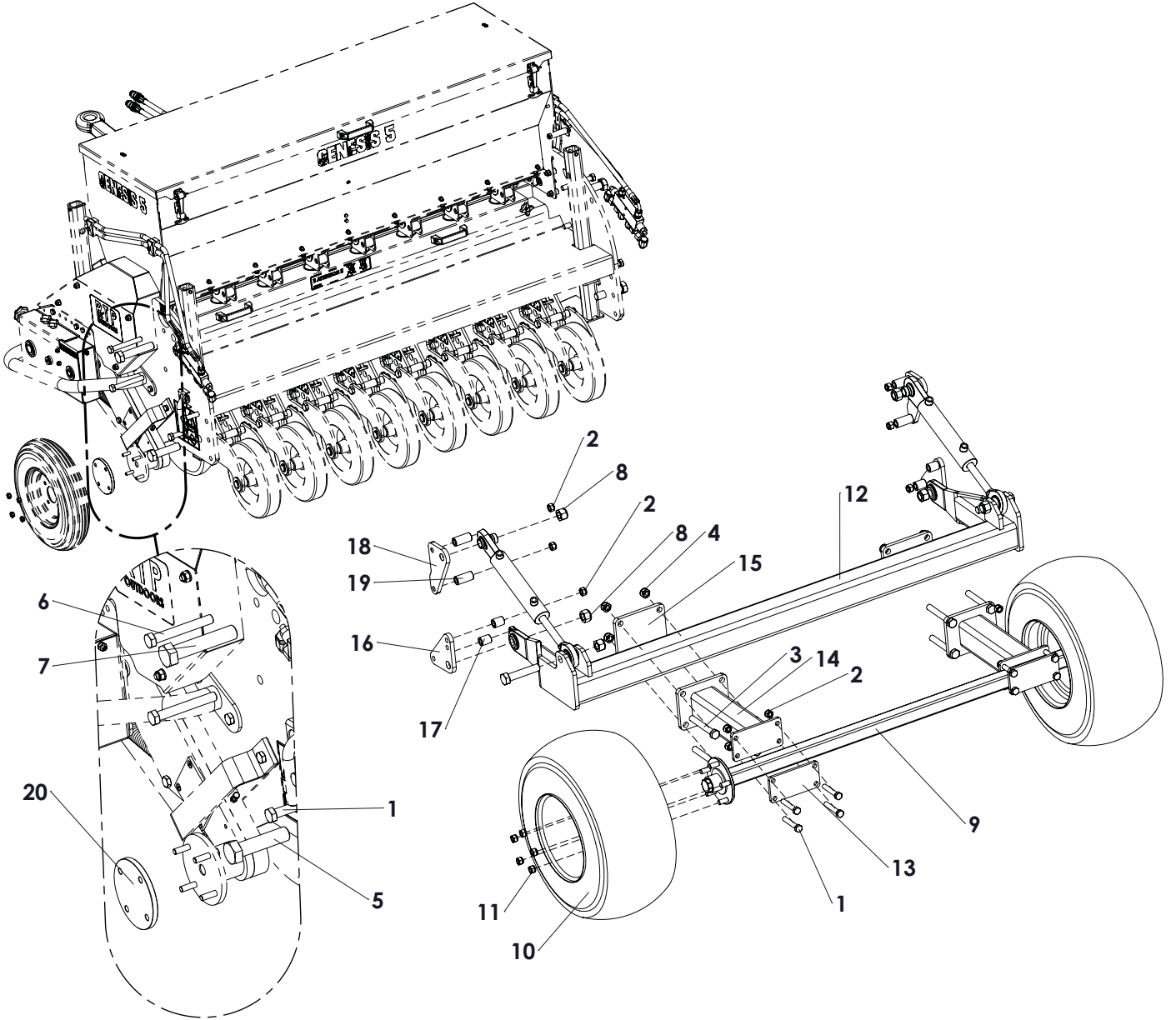
ITEM	PART NUMBER	DESCRIPTION	REMARKS	QUA
1	830.140.140	Self Lock Nut M14 10.9 - ISO 10511		4
2	802.140.900	Bolt M14 x 90 - ISO 4014		3
3	830.120.120	Self Lock Nut M12 - ISO 10511		4
4	802.121.700	Bolt M12 x 170 - ISO 4014		4
5	830.060.060	Self Lock Nut M6 - ISO 10511		3
6	804.060.200	Bolt M6 x 20 - ISO 4017		3
7	713.200.150	Bearing 6304-LLU		2
8	802.140.650	Bolt M14 x 65 - ISO 4014 - 10.9		1
9	468.102.600	Arm		2
10	468.032.202	Disc Ø220/ 3mm		1
11	402.140.500	Distance bush Ø20/Ø14.2 L=50		3
12	410.520.190	Bearing block		2
13	406.210.045	Distance bush		2
14	406.210.090	Distance bush Ø30/Ø20.5 L=9		1
15	575.041.270	Spring		1
16	402.140.290	Distance bush Ø20/Ø14.2 L=29		1
17	470.083.300	Support bracket		1
18	468.121.700	Lock plate		1
19	864.120.030	Washer M12 - ISO 7089		2
20	468.010.120	Dust cover		2
	222.153.016	Fixed coulter kit	Amount for 1 piece	

Quantity per coulter knife element

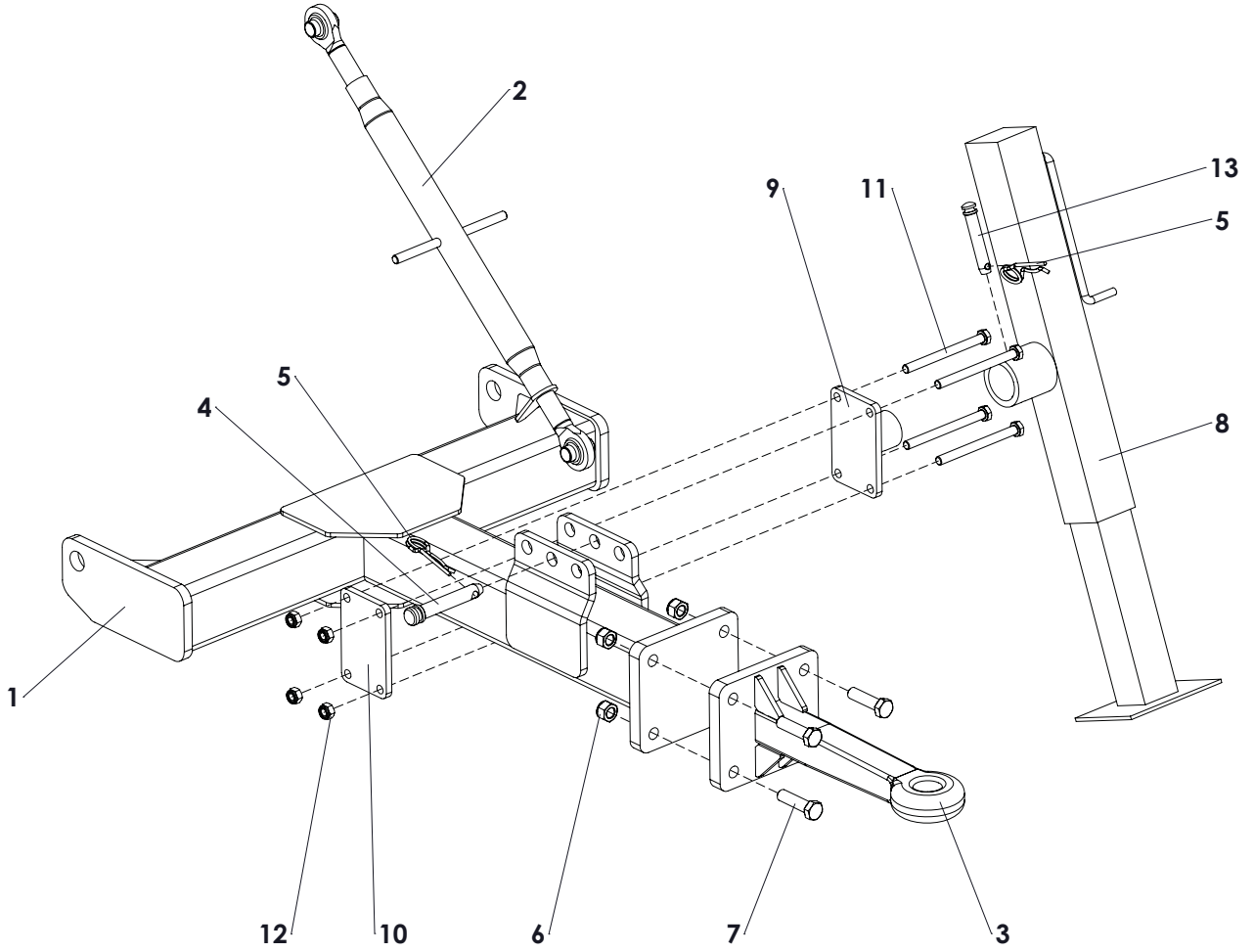




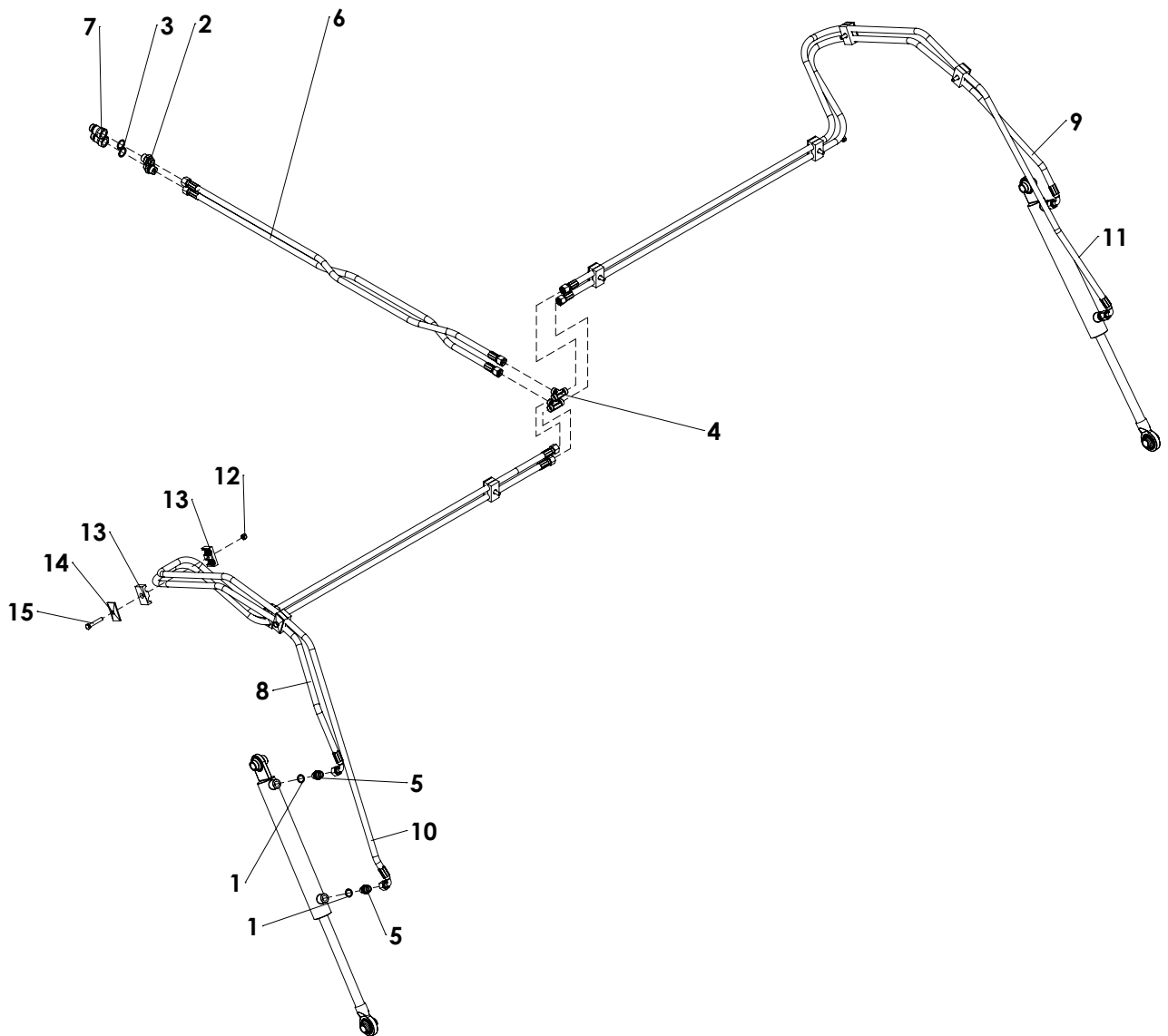
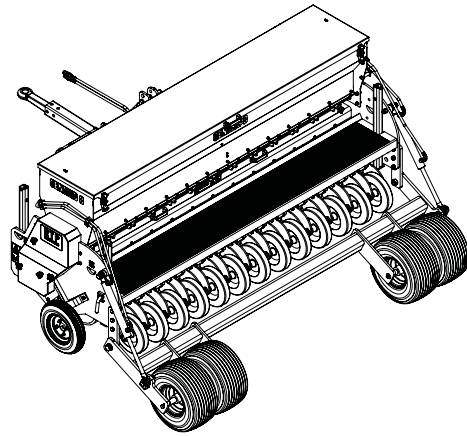
ITEM	PART NUMBER	DESCRIPTION	REMARKS	Genesis 5	Genesis 8
1	534.253.000	Hydraulic cilinder		2	2
2	830.160.160	Self Lock Nut M16 - ISO 10511		6	6
3	840.190.230	SL Nut 3/4"-16 UNF		4	4
4	808.191.000	Hex Bolt 3/4-16 L=4 UNF	Genesis 8	0	2
	808.190.830	Hex Bolt 3/4-16 3.25"	Genesis 5	2	0
5	478.257.970	Toplink		1	1
6	521.191.120	Top Link Pin		1	1
7	523.051.000	R-clip Round 5, DIN 11024		1	1
8	864.120.031	Large washer M12 - DIN 9021		2	2
9	866.120.020	Spring Washer M12 - DIN 127		2	2
10	804.120.350	Bolt M12 x 35 - ISO 4017		2	2
11	404.250.700	Distance Bush Wheel		8	8
12	2499188	Wheel shaft		2	2
13	511.542.236	Wheel Complete		4	4
14	424.060.480	Lock Pin		2	2
15	494.177.060	Bogy frame	Genesis 5	1	0
	494.263.060	Bogy frame	Genesis 8	0	1
16	406.250.502	Distance bush Ø32/Ø25 L=50	Genesis 5	2	0
	406.250.320	Distance bush Ø32/Ø25,2 L=32	Genesis 8	0	2
17	404.240.320	Collar bush Ø50/Ø24 L=32		2	2
18	880.060.100	Grease nipple M6 DIN 71412A		2	2
19	802.160.552	Bolt M16 x 55 class 10.9		6	6
20	412.210.250	Distance bush		2	2
21	808.191.140	HFBOLT 0.75-16x4.5x1.75-C		2	2
22	864.240.044	Washer M24 - ISO 7089		2	2
23	830.240.240	Self Lock Nut M24 - ISO 10511		2	2
24	802.240.800	Bolt M24 x 80 - ISO 4014 class 10.9		2	2
25	470.203.352	Strip		2	2
26	494.063.072	Drawbar Bogy	Genesis 5	1	0
	462.217.950	Drawbar Bogy	Genesis 8	0	1
	222.153.002	Bogy kit Genesis 5	Complete		
	222.248.000	Bogy kit Genesis 8	Complete		



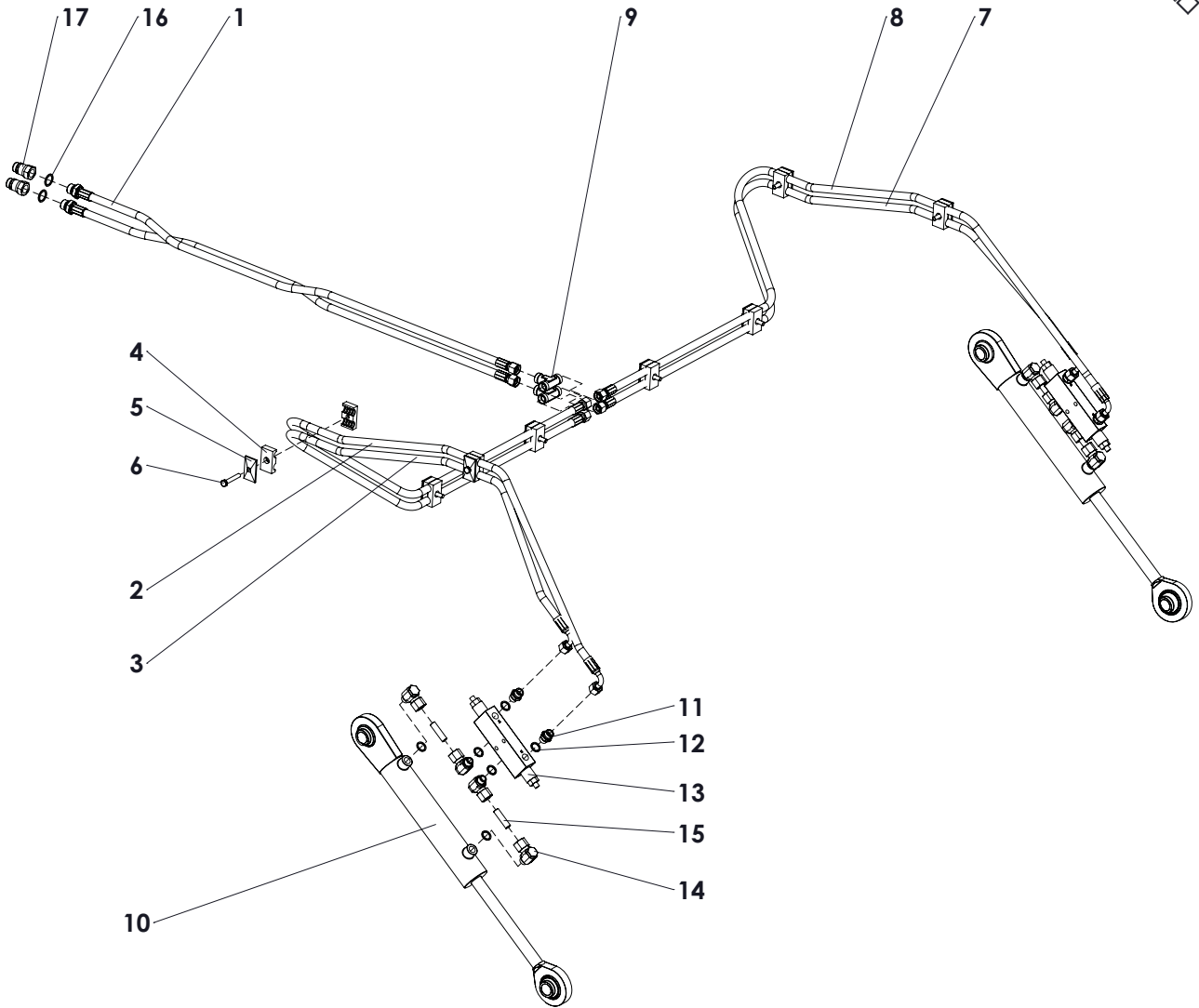
ITEM	PART NUMBER	DESCRIPTION	REMARKS	Genesis 5	Genesis 8
1	802.160.900	Bolt M16 x 90 - ISO 4014		8	8
2	830.160.160	Self Lock Nut M16 10.9 - ISO 10511		16	16
3	802.201.500	Bolt M20 x 150 - ISO 4014		8	8
4	830.200.200	Self Lock Nut M20 Din 985 h=17		8	8
5	808.010.040	Hex Bolt 1"-8x4.0" UNC - ANSI B18.2.1 Grade 5.2 (8.8)		2	2
6	802.161.200	Bolt M16 x 120 - ISO 4014		4	4
7	808.010.051	Hex Bolt 1"-8x5" UNC - ANSI B18.2.1		2	2
8	838.010.220	Self Lock Nut 1 inch UNC - DIN 985		4	4
9	519.050.915	Wheel shaft 50x50 L=1500		1	0
	519.050.921	Wheel shaft 50x50 L=2200		0	1
10	511.660.305	Wheel 26x12 inch complete		2	2
11	844.160.160	Wheel Nut M16		10	10
12	494.501.840	Bogy frame Genesis 5		1	0
	494.502.760	Bogy frame Genesis 8		0	1
13	464.102.000	Clamp strip		2	2
14	462.153.750	Swingarm		2	2
15	468.152.008	Mounting plate		2	2
16	468.151.750	Mounting plate		2	2
17	406.170.380	Distance bush Ø30/Ø16.5 L=38		4	4
18	468.152.130	Cylinder contra plate		2	2
19	406.170.640	Distance bush Ø30/Ø16.5 L=64		4	4
20	519.010.130	Spacer		1	1



ITEM	PART NUMBER	DESCRIPTION	REMARKS	QUA
1	462.217.810	Drawbar Bogy	Genesis 5	1
	462.217.450	Drwabar Bogy	Genesis 8	1
2	478.257.970	Toplink		1
3	470.203.900	Towing hitch		1
4	521.191.120	Top Link Pin		1
5	523.051.000	R-clip Round 5, DIN 11024		2
6	830.160.160	Self Lock Nut M16 10.9 - ISO 10511		4
7	802.160.600	Bolt M16 x 60 - ISO 4014 - 10.9		4
8	460.705.550	Spindle		1
9	460.140.100	Mounting hub		1
10	468.012.140	Mounting Plate		1
11	802.121.400	Bolt M12 x 140 - ISO 4014		4
12	830.120.120	Self Lock Nut M12 - ISO 10511 Class 10.9		4
13	521.161.000	Top link pin Cat. 0 - 16.1 x 100		1
14	541.171.850	Hose NSK10-3/8" L=1850 1xPGLO1018 + 1xPN108		1

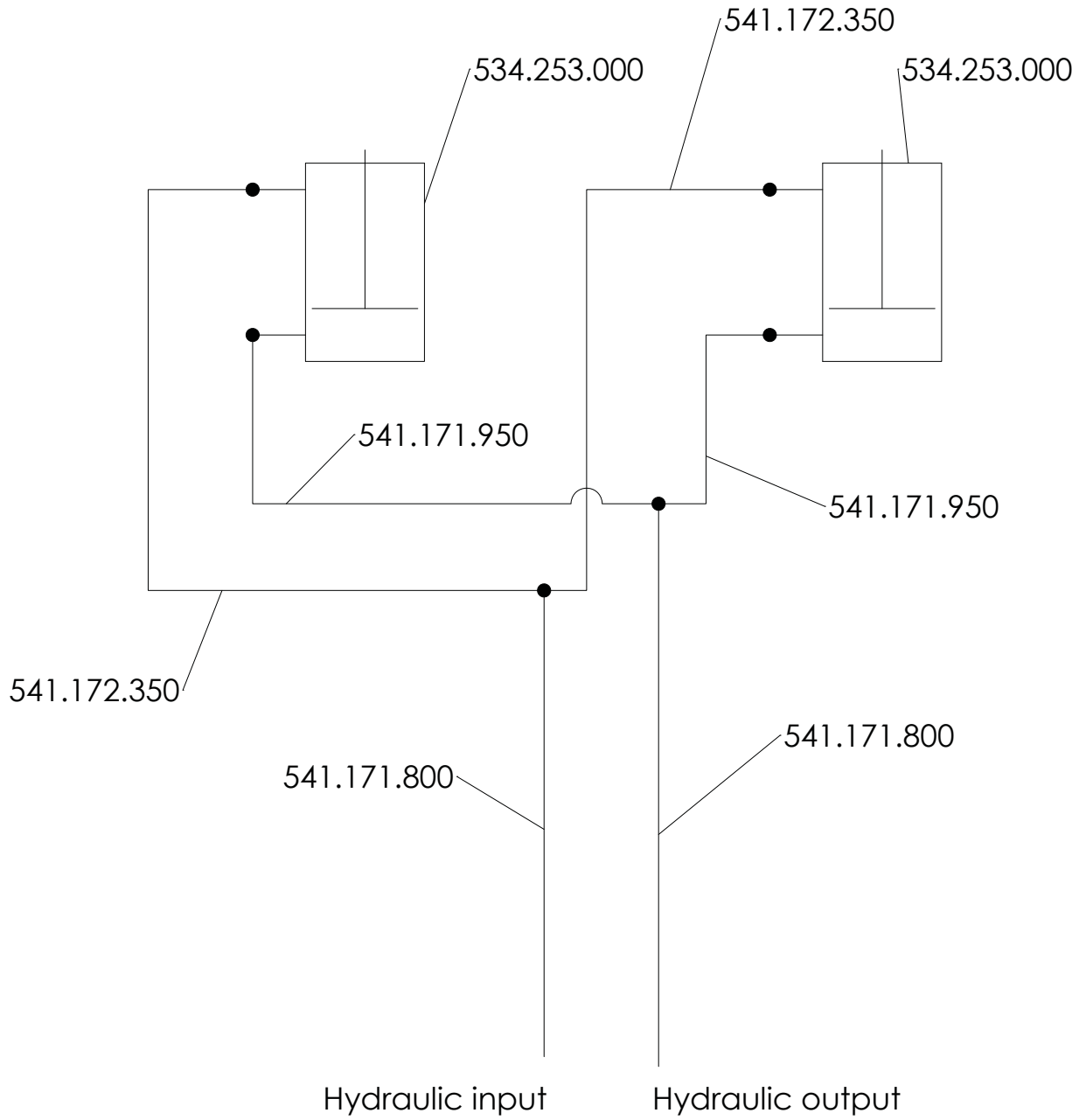


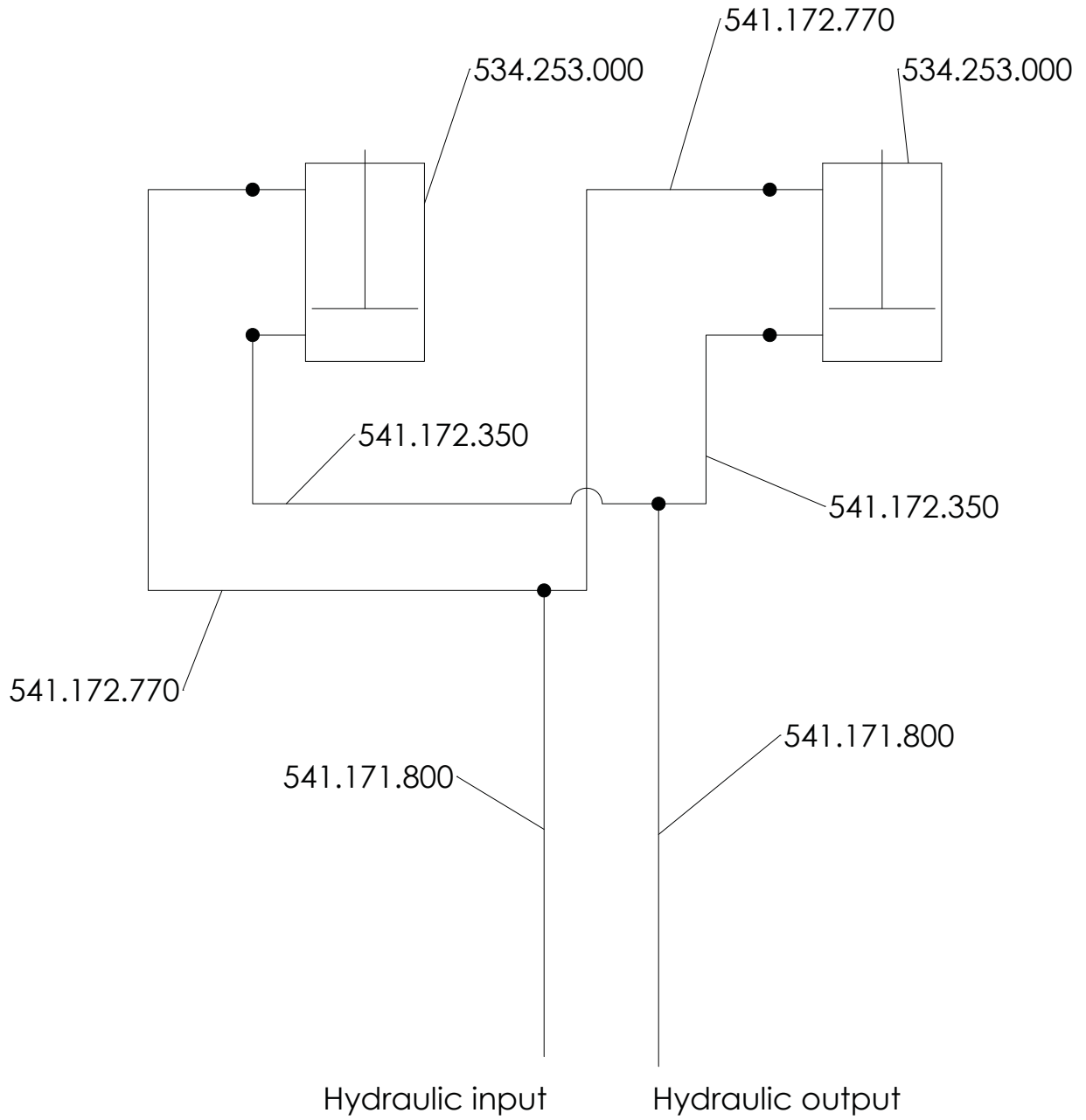
ITEM	PART NUMBER	DESCRIPTION	REMARKS	Genesis 5	Genesis 8
1	874.170.020	Copper washer 3_8		4	4
2	544.130.402	Nipple BSP 1_2" x pipe 12 (M18)		2	2
3	874.210.020	Copper washer 1_2		2	2
4	544.124.125	T-Connector 12x12x12		2	2
5	544.170.120	Nipple BSP 3_8" x pipe 12 (M18)		4	4
6	541.171.850	Hose NSK10-3/8" L=1850 2xPGLO101		2	2
7	545.210.800	Quick connector male 1/2"		2	2
8	541.172.350	Hose NSK10-3/8" TL=2450 1x PGLO1018 + 1xPGLO101890	Genesis 8	0	1
	541.171.950	Hose NSK10-3/8" TL=1950 1x PGLO1018 + 1xPGLO101890	Genesis 5	1	0
9	541.172.350	Hose NSK10-3/8" TL=2450 1x PGLO1018 + 1xPGLO101890	Genesis 8	0	1
	541.171.950	Hose NSK10-3/8" TL=1950 1x PGLO1018 + 1xPGLO101890	Genesis 5	1	0
10	541.172.770	Hose NSK10-3/8" TL=2770 1x PGLO1018 + 1xPGLO101890	Genesis 8	0	1
	541.172.350	Hose NSK10-3/8" TL=2450 1x PGLO1018 + 1xPGLO101890	Genesis 5	1	0
11	541.172.770	Hose NSK10-3/8" TL=2770 1x PGLO1018 + 1xPGLO101890	Genesis 8	0	1
	541.172.350	Hose NSK10-3/8" TL=2450 1x PGLO1018 + 1xPGLO101890	Genesis 5	1	0
12	830.080.080	Self Lock Nut M8 - ISO 10511		8	8
13	547.150.150	Hose clamp double 15mm		16	16
14	547.300.510	Cover plate hose clamp 2x15 - 2x18		8	8
15	802.080.500	Bolt M8 x 50 - ISO 4014		8	8

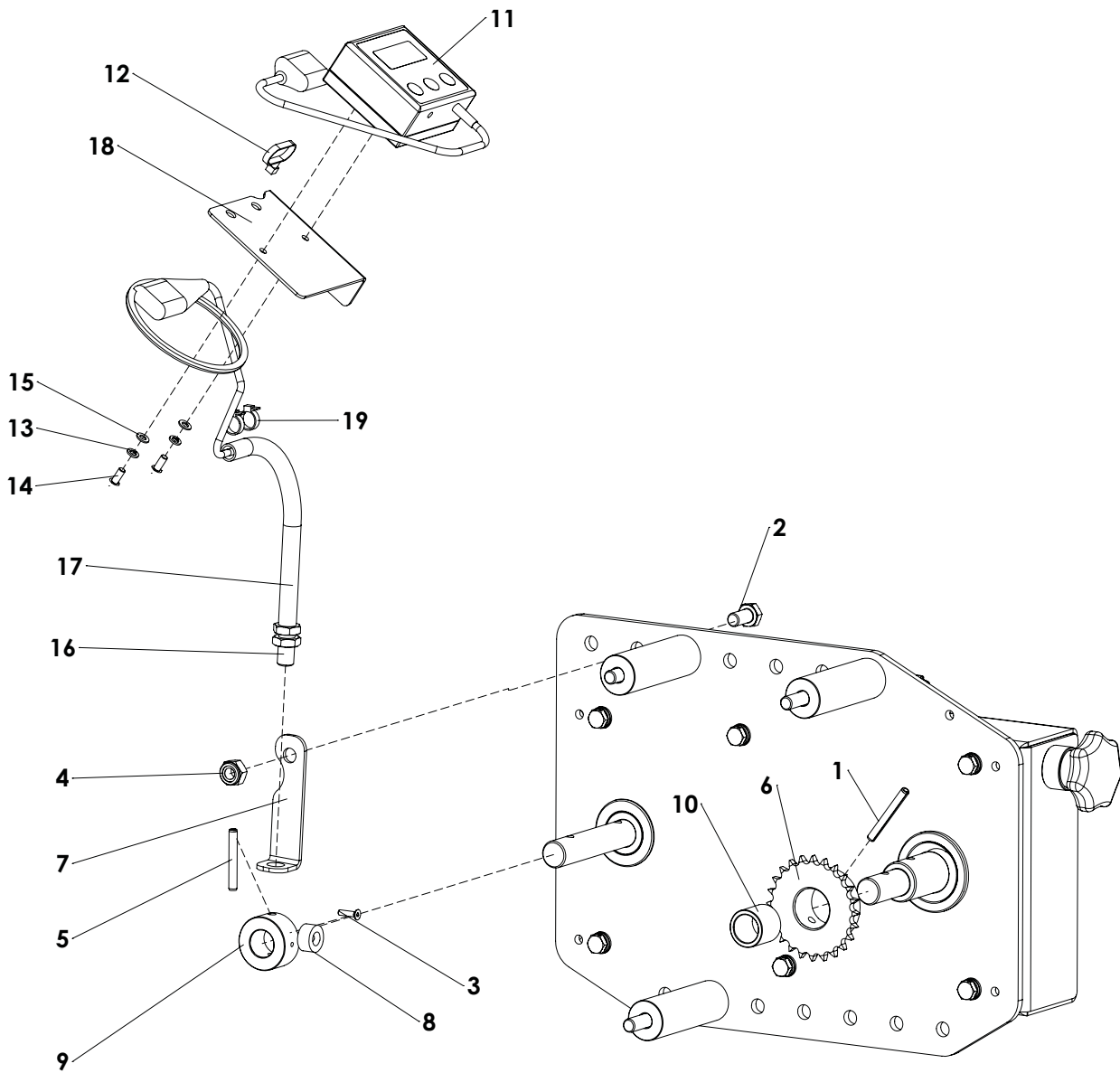




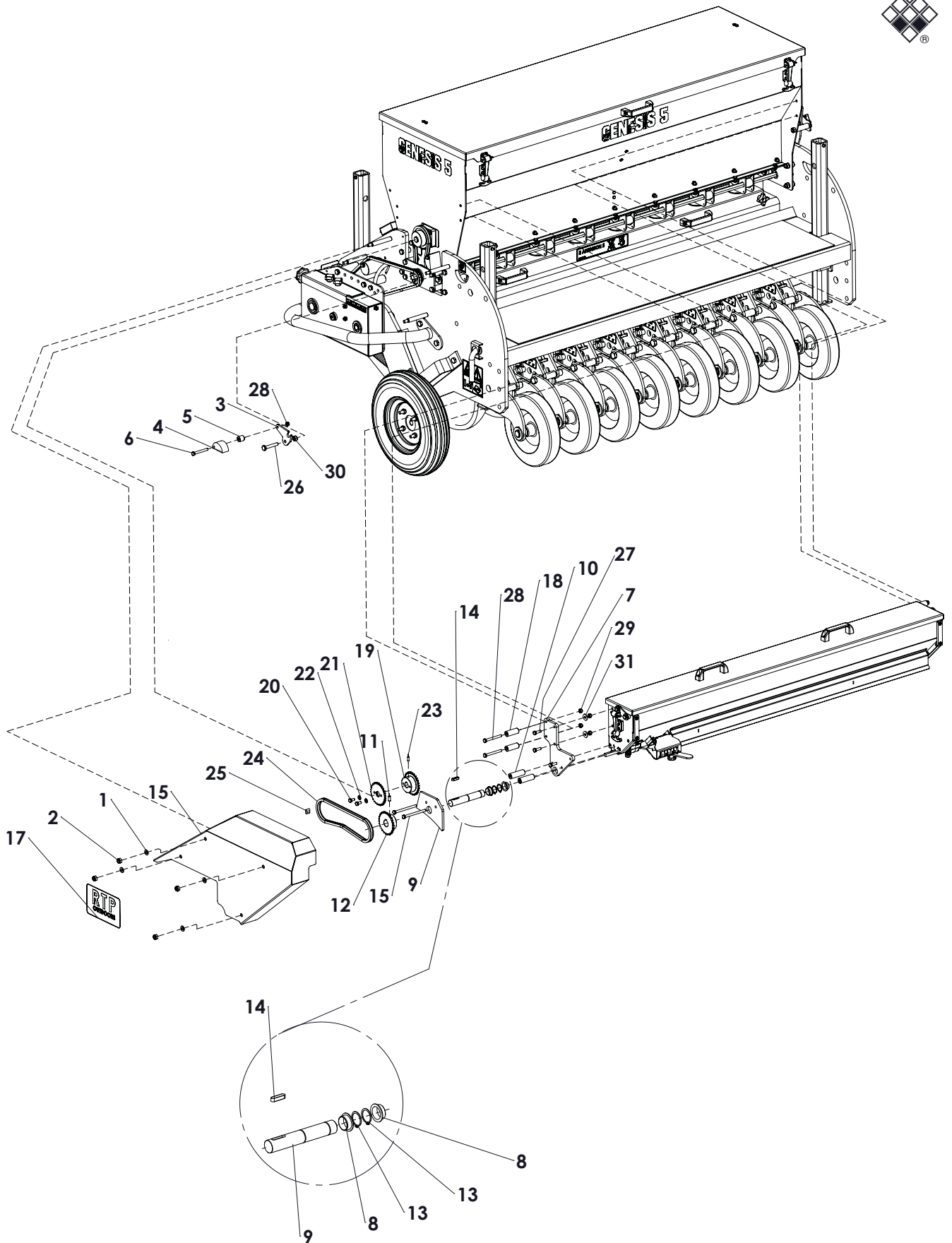
ITEM	PART NUMBER	DESCRIPTION	REMARKS	Genesis 5	Genesis 8
1	541.171.850	Hose NSK10-3/8" L=1850 1xPGLO1018 + 1xPN108		2	2
2	541.171.950	Hose NSK10-3/8" TL=1950 1xPGLO1018 + 1x PGLO101890		1	0
	541.172.350	Hose NSK10-3/8" TL=2450 1xPGLO1018 + 1x PGLO101890		0	1
3	541.171.950	Hose NSK10-3/8" TL=1950 1xPGLO1018 + 1x PGLO101890		1	0
	541.172.350	Hose NSK10-3/8" TL=2450 1xPGLO1018 + 1x PGLO101890		0	1
4	547.150.150	Hose clamp double 15mm		16	16
5	547.300.510	Cover plate hose clamp 2x15 - 2x18		8	8
6	802.080.500	Bolt M8 x 50 - ISO 4014		8	8
7	541.171.950	Hose NSK10-3/8" TL=1950 1xPGLO1018 + 1x PGLO101890		1	0
	541.172.350	Hose NSK10-3/8" TL=2450 1xPGLO1018 + 1x PGLO101890		0	1
8	541.171.950	Hose NSK10-3/8" TL=1950 1xPGLO1018 + 1x PGLO101890		1	0
	541.172.350	Hose NSK10-3/8" TL=2450 1xPGLO1018 + 1x PGLO101890		0	1
9	544.154.150	T-Connector 15x15x15		2	2
10	534.250.492	Hydraulic cylinder 25-50 Stroke=200		2	2
11	544.170.120	Nipple BSP 3_8" x pipe 12 (M18)		4	4
12	874.170.020	Copper washer 3_8		12	12
13	536.502.100	Double equalising valve 3/8"		2	2
14	544.123.122	L-connector G3/8-12mm		8	8
15	542.120.045	Tube 12 x 45		4	4
16	874.210.020	Copper washer 1_2		2	2
17	545.210.800	Quick connector male 1/2"		2	2





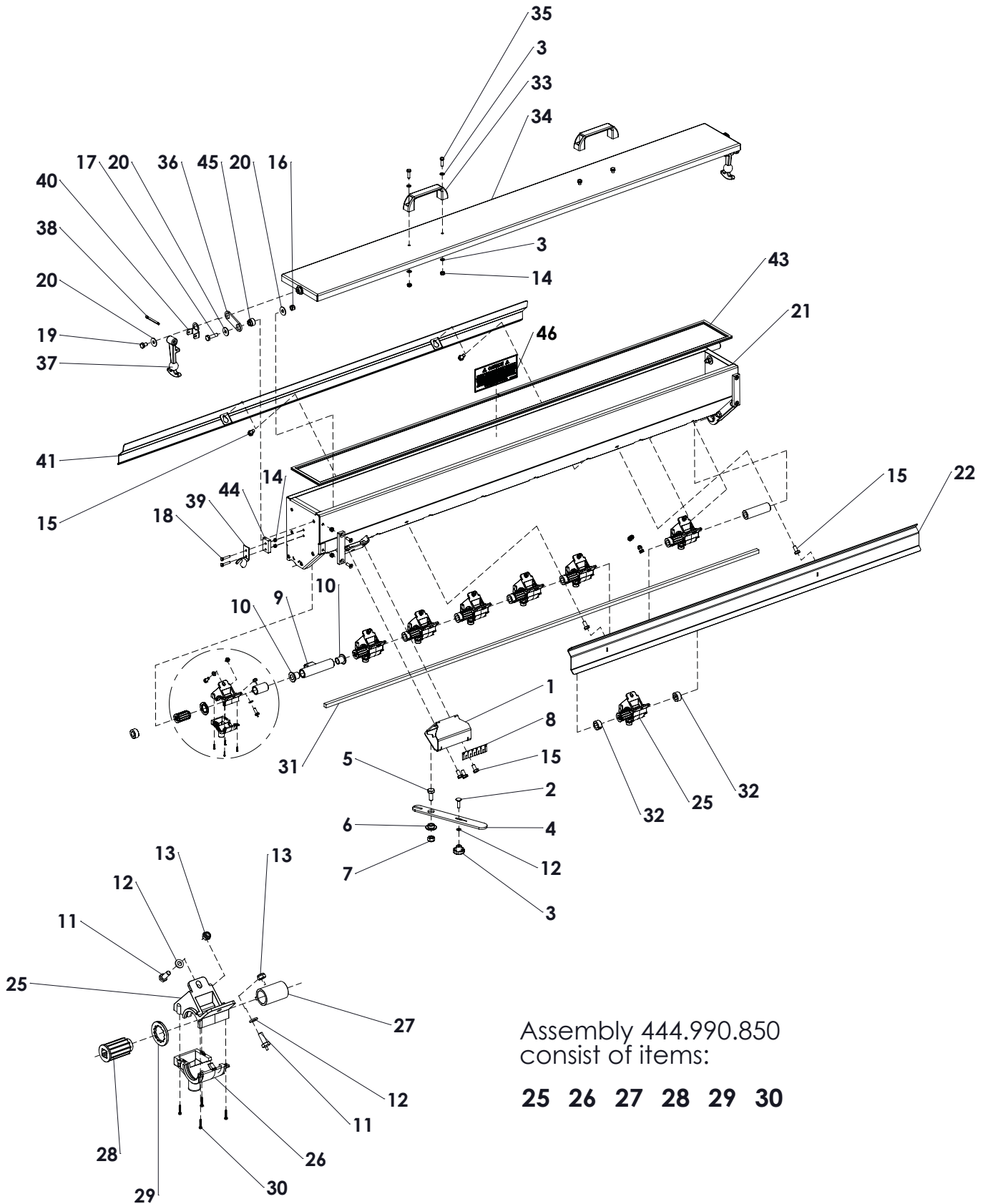






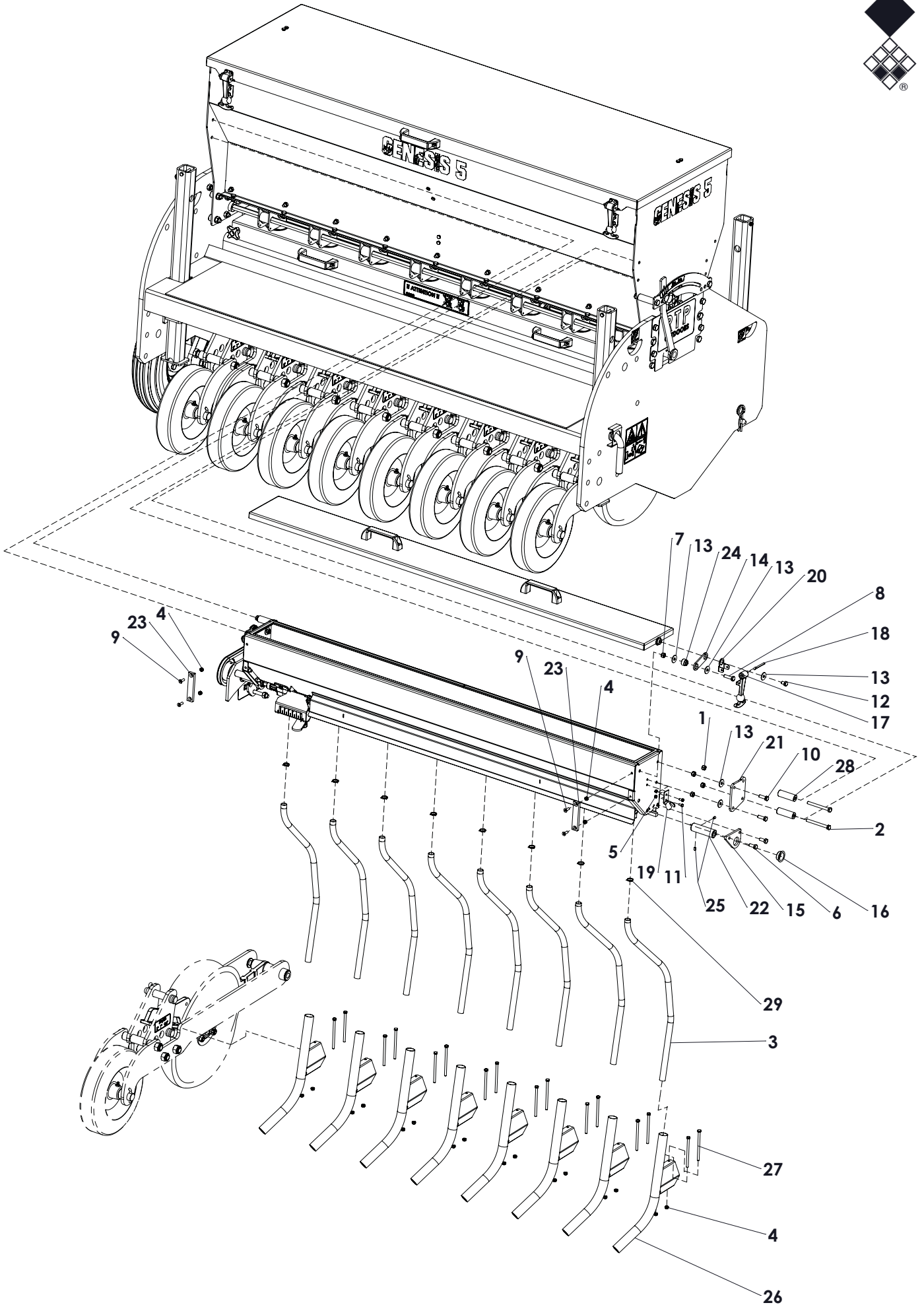
**General remark:**  
**All part ammounts on this page are for both Genesis 5 and 8**

ITEM	PART NUMBER	DESCRIPTION	REMARKS	QUA
1	864.100.030	Washer M10 - ISO 7089		4
2	830.100.100	Self Lock Nut M10 - ISO 10511		5
3	468.080.900	Tensioner plate		1
4	444.300.600	Chain Tensioner		1
5	402.090.200	distance bush Ø20-Ø8,5 L=20		1
6	802.080.650	Bolt M8 x 65 - ISO 4014		1
7	468.102.150	Mount plate		1
8	732.250.120	Bearing Ø25 h=11.5		2
9	468.081.550	Bearing Plate		1
10	402.090.640	distance bush Ø20-Ø8,5 L=64		2
11	818.080.201	Set screw M8 x 20 - DIN 916		1
12	635.000.903	Sprocket 3/8" (06B) simplex 28Z Ø25		1
13	870.025.120	Circlip d=25 - DIN 471		2
14	884.080.320	Key 8x7x32 - DIN 6885		1
15	802.080.100	Bolt M8 x 100 - ISO 4014		2
16	456.840.410	Cover genesis with small seed box		1
17	922.260.414	Label RTP Outdoors white		1
18	402.090.522	distance bush Ø20-Ø8,5 L=52		2
19	635.000.905	Sprocket 3/8" (06B) simplex 28Z Ø20 double chain		1
20	804.080.160	Bolt M8 x 16 - ISO 4017		2
21	635.000.089	Plate wheel simplex DIN 8187 3/8" x 7/32" 28Z Ø20		1
22	864.080.030	Washer M8 - ISO 7089		2
23	818.060.160	Set screw M6 x 16 Din 913		1
24	631.000.722	Chain 3/8" 38 shackles		1
25	638.090.090	Chain connector 3_8 inch 6B Simplex		1
26	802.100.600	Bolt M10 x 60 - ISO 4014		1
27	804.080.250	Bolt M8 x 25 - ISO 4017		3
28	804.080.750	Bolt M8 x 75 - ISO 4017		2
29	830.080.080	Self Lock Nut M8 - ISO 10511		5
30	830.100.100	Self Lock Nut M10 - ISO 10511		5
31	864.080.024	Large washer M8 - DIN 9021		2

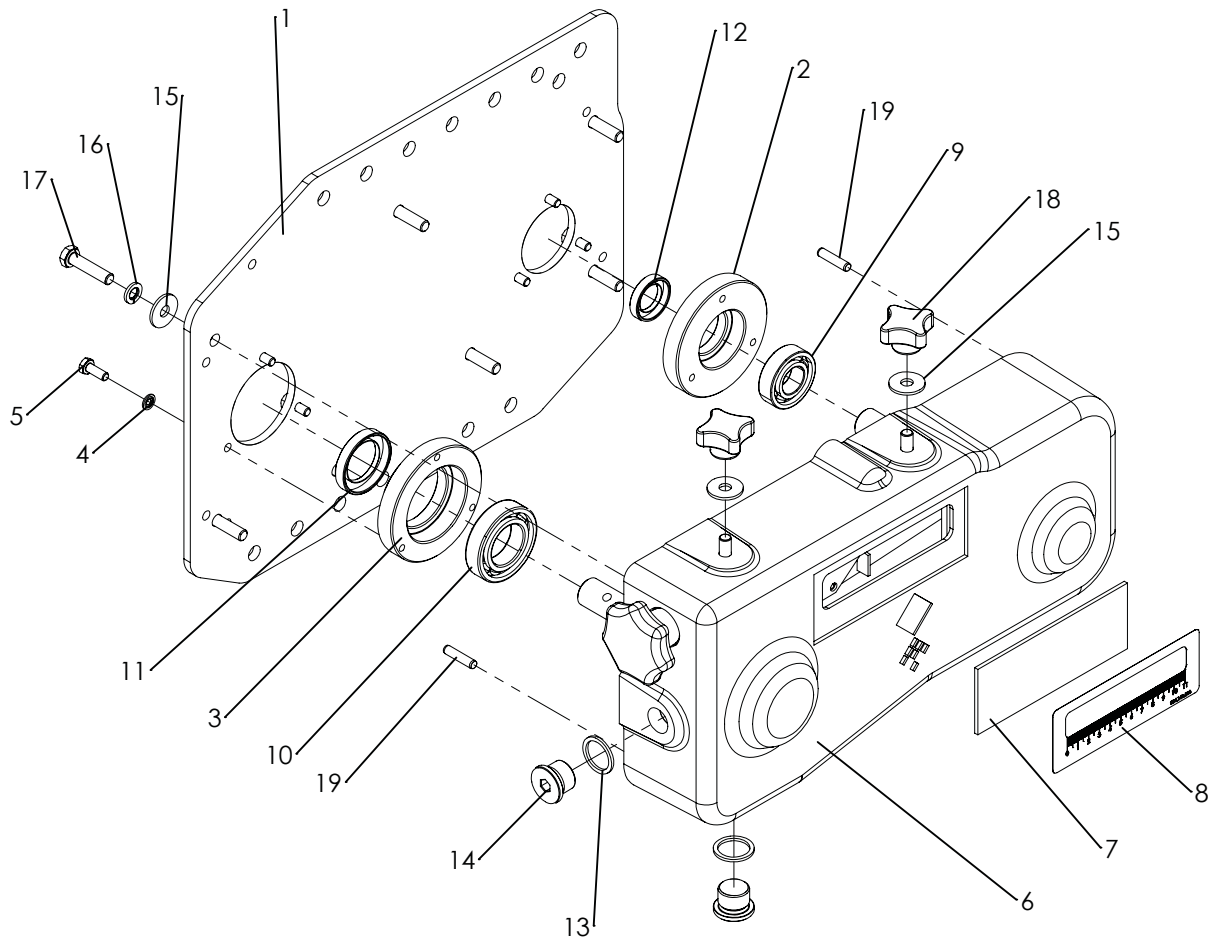




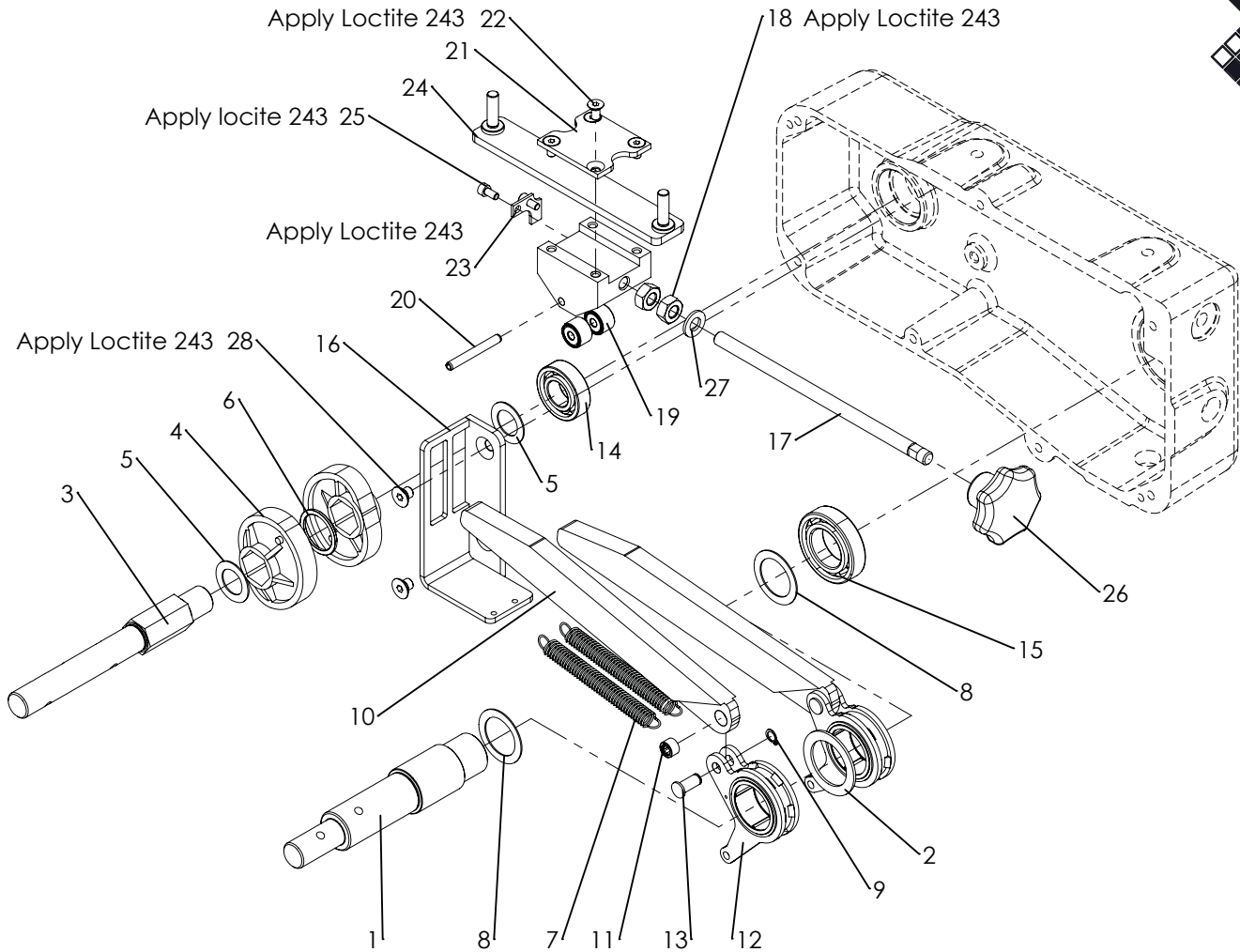
ITEM	PART NUMBER	DESCRIPTION	REMARKS	Genesis 5	Genesis 8
1	466.031.180	Adjustment plate small seeder		1	1
2	820.060.250	MH Bolt M6 x 25 ISO 8677		1	1
3	836.060.200	Knob M6 x 32mm		1	1
4	468.052.350	Adjustment handle		1	1
5	804.100.250	Bolt M10 x 25 - ISO 4017		1	1
6	404.100.100	Pivot bush		1	1
7	830.100.100	Self Lock Nut M10 - ISO 10511		1	1
8	922.340.017	Gauge decall Small seed system		1	1
9	476.042.105	Adjuster weldment		1	1
10	732.140.210	Bearing bush		2	2
11	804.060.160	Bolt M6 x 16 - ISO 4017		16	26
12	864.060.030	Washer M6 - ISO 7089		25	35
13	830.060.060	Self Lock Nut M6 - ISO 10511		24	40
14	830.050.050	Self Lock Nut M5 - ISO 10511		4	4
15	804.080.160	Bolt M8 x 16 - ISO 4017		7	
16	830.080.080	Self Lock Nut M8 - ISO 10511		1	1
17	804.080.300	Bolt M8 x 30 - ISO 4017		1	1
18	804.050.250	Bolt M5 x 25 - ISO 4017		2	2
19	804.080.120	Bolt M8 x 12 - ISO 4017		1	1
20	864.080.024	Large washer M8 - DIN 9021		3	3
21	469.029.147	Weldment hopper small seeds box 8 elements	Genesis 5	1	
	468.029.240	hopper small seed box 13 elements	Genesis 8		1
22	456.122.007	Cover front 8 master		1	1
23	456.094.007	Cover front 13 2nd		0	1
24	444.990.850	Small seed cup		8	13
25	444.990.851	small seed cup upper body		1	1
26	444.990.852	Small seed cup lower body		1	1
27	444.990.854	Small seed blocker		1	1
28	444.990.853	Small seeds wheel metric		1	1
29	444.990.855	Gap closing wheel		1	1
30	860.250.120	Pan Thread Forming Screw For Plastic 2,3 x 12		4	4
31	472.109.160	driveshaft ■ 10 8 elements	Genesis 5	1	
	472.109.248	driveshaft ■ 10 13 elements	Genesis 8		1
32	868.140.120	Adjusting ring Ø14 DIN705		13	24
33	444.151.250	Handle		2	2
34	456.149.016	weldment cover small seed box 8 elements	Genesis 5	1	
	456.244.016	Weldment cover hopper 13 elements	Genesis 8		1
35	804.060.200	Bolt M6 x 20 - ISO 4017		4	4
36	468.040.740	Hinge plate		1	1
37	490002	Rubber lock		1	1
38	882.050.450	Cotter Pin 5 x 45 - DIN 94		1	1
39	590.650.000	Bracket for latch		1	1
40	468.020.370	lock plate rubber		1	1
41	456.142.008	cover back 8 elements		1	1
42	456.093.008	cover back 13 2nd	Genesis 8		1
43	446.109.290	Rubber U-seal 1-4mm L=3500	Genesis 5	1	
	446.109.290	Rubber U-seal 1-4mm L=5015	Genesis 8		1
44	444.080.380	Spacer rubber lock		1	1
45	406.090.140	distance bush Ø20-16-Ø8,5 L=14.5		1	1
46	924.280.000	Decal seed hopper		1	1



ITEM	PART NUMBER	DESCRIPTION	REMARKS	Genesis 5	Genesis 8
1	830.080.080	Self Lock Nut M8 - ISO 10511		5	5
2	804.080.800	Bolt M8 x 80 - ISO 4017		2	2
3	555.140.600	PVC hose clear 14x18mm L=600		8	13
4	830.060.060	Self Lock Nut M6 - ISO 10511		20	36
5	830.050.050	Self Lock Nut M5 - ISO 10511		4	4
6	804.080.200	Bolt M8 x 20 - ISO 4017		2	2
7	830.080.080	Self Lock Nut M8 - ISO 10511		4	4
8	804.080.300	Bolt M8 x 30 - ISO 4017		2	2
9	816.060.200	Bolt M6 x 20 - DIN 7991		4	4
10	804.080.250	Bolt M8 x 25 - ISO 4017		2	2
11	804.050.100	Bolt M5 x 10 - ISO 4017		2	2
12	804.080.120	Bolt M8 x 12 - ISO 4017		1	1
13	864.080.024	Large washer M8 - DIN 9021		5	5
14	468.040.740	Hinge plate		1	1
15	468.060.890	bearingplate		1	1
16	732.250.120	Bearing Ø25 h=11.5		1	1
17	490002	Rubber lock		1	1
18	882.050.450	Cotter Pin 5 x 45 - DIN 94		1	1
19	590.650.000	Bracket for latch		1	1
20	468.020.370	lock plate rubber		1	1
21	468.051.010	Mount plate		1	1
22	476.250.800	Shaft end tube		1	1
23	444.080.960	spacer cover Small seeds box		2	2
24	406.090.140	distance bush Ø20-16-Ø8,5 L=14.5		2	2
25	818.060.080	Set screw M6x8		1	1
26	478.338.253	Droppertube		8	13
27	802.061.000	Bolt M6 x 100- ISO 4014		16	32
28	402.090.590	distance bush Ø20-Ø8,5 L=59	Genesis 5	2	
	402.090.640	distance bush Ø20-Ø8,5 L=64	Genesis 8		2
29	896.160.220	Spring hose clamp		8	13

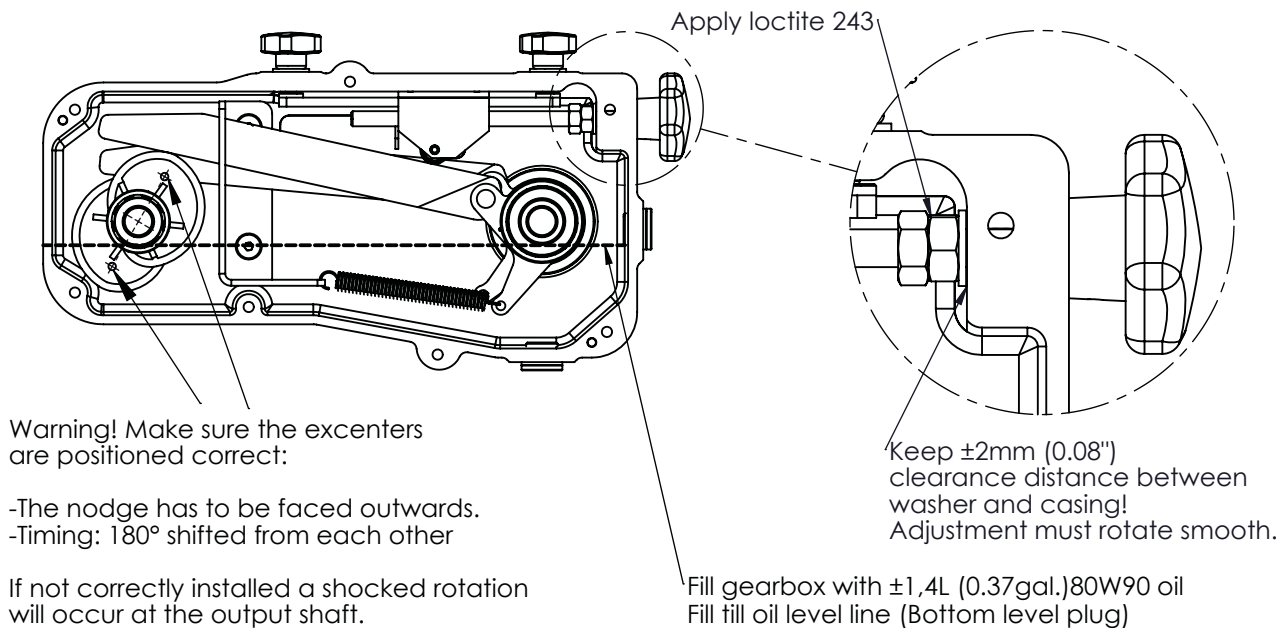


ITEM	PART NUMBER	DESCRIPTION	REMARKS	QUA
1	468.064.060	Lid plate		1
2	434.210.850	Bearing hub Ø42		1
3	434.230.850	Bearing hub Ø55		1
4	874.060.020	Bonded seal ring M6		6
5	804.060.160	Bolt M6 x 16 - ISO 4017		6
6	448.380.800	Casted gearbox housing		1
7	444.021.380	Window		1
8	934.140.510	Gauge decall		1
9	711.200.120	Bearing 6004		2
10	711.300.132	Bearing 6006		2
11	762.300.080	Oil seal 30-45-8		1
12	762.200.070	Oil seal 20-32-7		1
13	874.210.020	Copper washer 1_2		2
14	549.210.200	Blind plug G1/2		2
15	864.080.024	Large washer M8 - DIN 9021		9
16	866.080.020	Spring Washer M8 - DIN 127		7
17	804.080.350	Bolt M8 x 35 - ISO 4017		7
18	836.080.402	Closed Knob M8 - Din 6335		2
19	876.060.260	Parallel pin ISO 8734 - 6 x 26		2
	623.200.400	Gearbox complete		

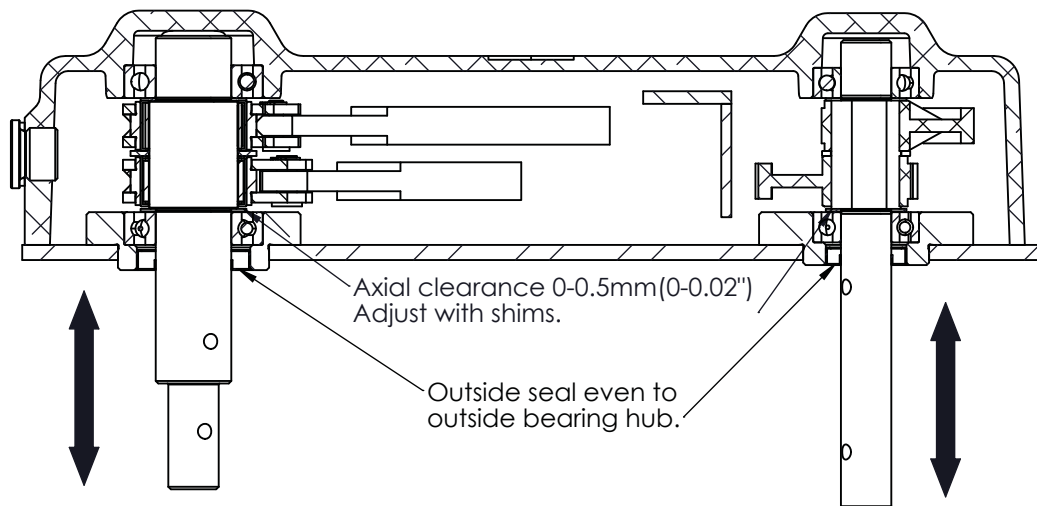


ITEM	PART NUMBER	DESCRIPTION	REMARKS	QUA
1	422.351.382	Shaft		1
2	444.020.500	Washer		1
3	422.242.020	Shaft		1
4	444.200.730	Excenter		2
5	868.032.100	Shim Ø20xØ32x1.0 DIN988	Quantity depending on clearance	
6	406.280.030	Spacer		1
7	575.010.800	Spring		2
8	868.042.100	Shim Ø30xØ42x1.0 DIN988	Quantity depending on clearance	
9	870.008.080	Circlip d=8 - DIN 471		2
10	464.152.702	Rocker strip		2
11	721.080.080	Bearing HK0808		2
12	442.200.980	Rocker arm assembly		2
13	418.080.200	Pin		2
14	711.200.120	Bearing 6004		1
15	711.300.132	Bearing 6006		1
16	470.120.550	Guide		1
17	852.102.100	Threaded rod M10x210		1
18	826.100.100	Nut M10 - DIN 934		2
19	721.060.120	Roller bearing		2
20	878.060.500	Roll Pin 6 x 50 - ISO 8752		1
21	468.040.530	Lock plate		1
22	816.060.122	Bolt M6 x 12 - DIN 7991		4
23	468.020.490	Indicator		1
24	468.061.620	Slider bracket		1
25	814.050.100	DIN 912 M5 x 10 --- 10C		2
26	836.100.630	Knob M10 with set screw		1
27	864.100.030	Washer M10 - ISO 7089		1
28	816.080.100	Bolt M8 x 10 - DIN 7991		2

**Timing, Spindle adjustment and Oil level**

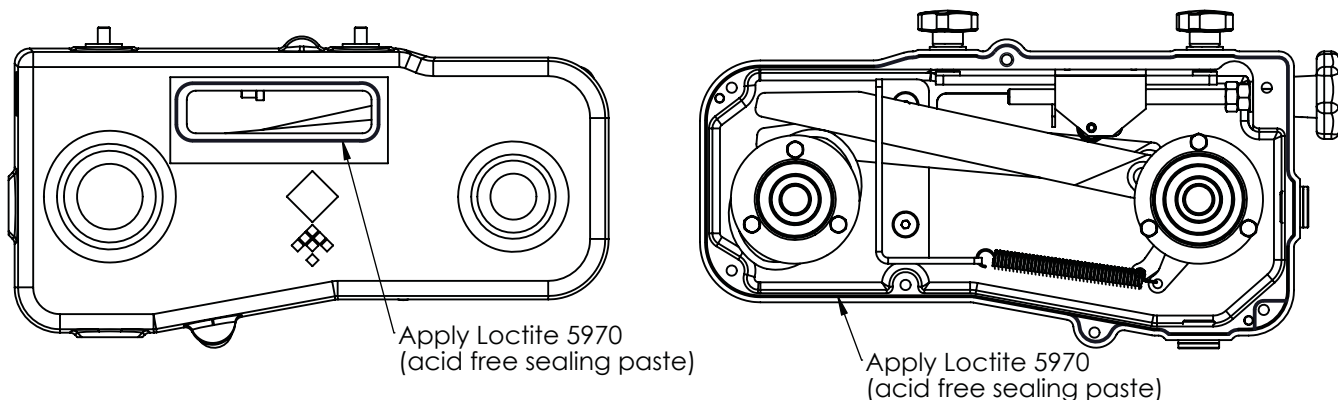


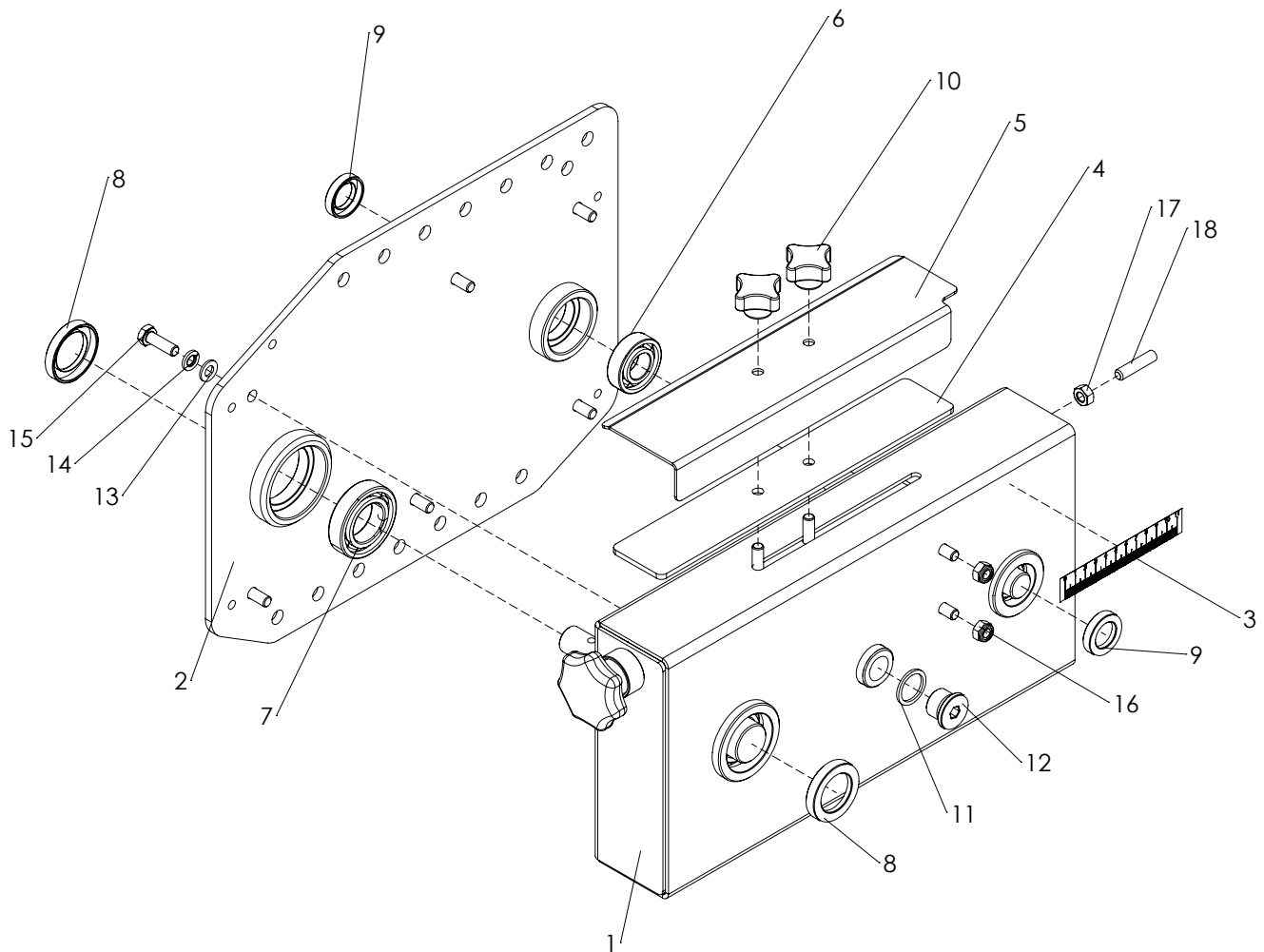
**Axial clearance**



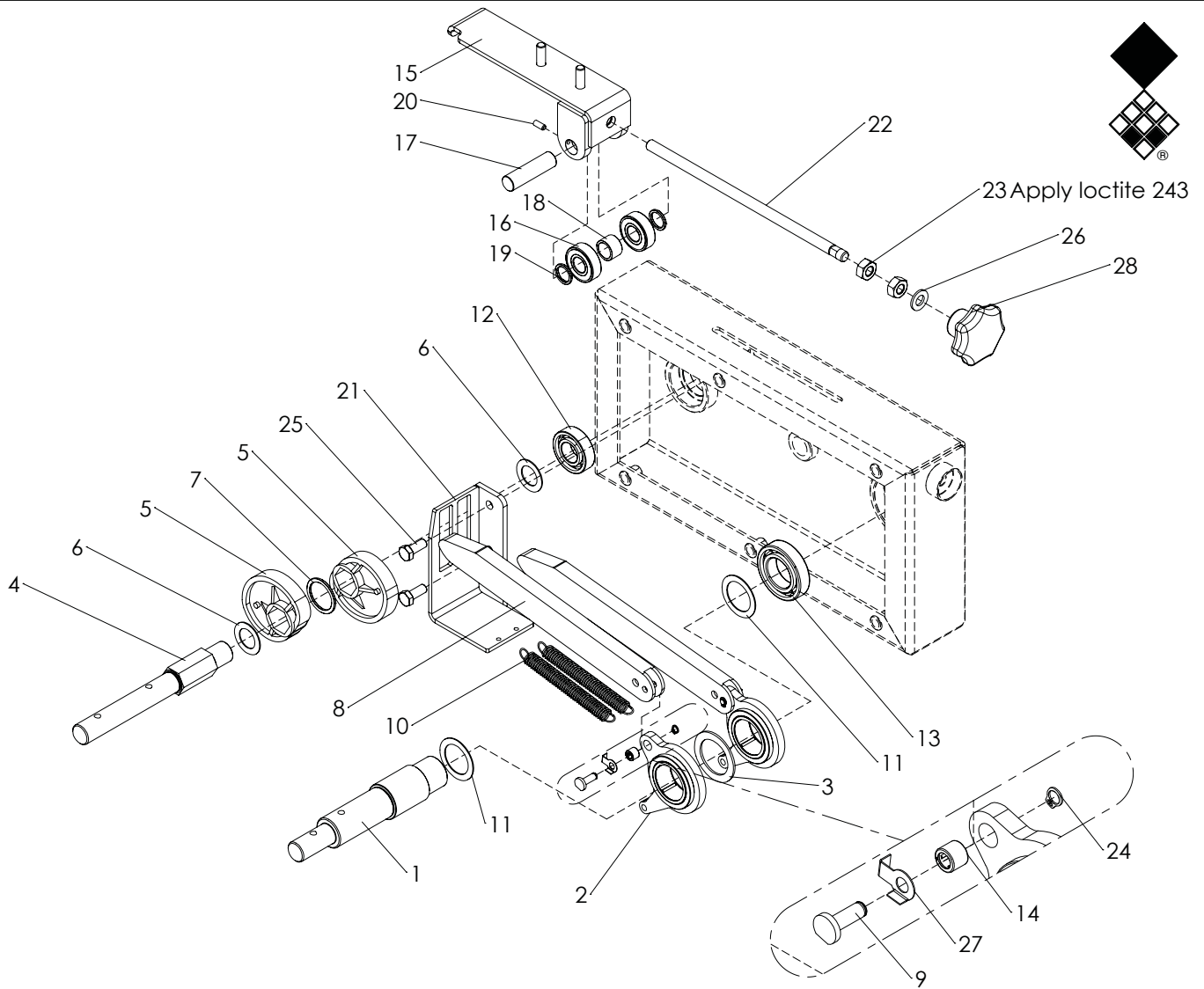
**Sealing plan**

1. Put sealing paste (Loctite 5970) on the gearbox housing according to the closed line as shown on the pictures below.
2. Make sure to put sealing paste around the threaded holes.
3. Make sure to clean the edges from excess sealant.





ITEM	PART NUMBER	DESCRIPTION	REMARKS	QUA
1	470.034.052	Gearbox housing		1
2	470.064.004	Gearbox lid		1
3	922.340.014	Gauge decall		1
4	444.032.900	Slider seal		1
5	468.022.900	Indicator		1
6	711.200.120	Bearing 6004		1
7	711.300.132	Bearing 6006		1
8	762.300.080	Oil seal 30-45-8		2
9	762.200.070	Oil seal 20-32-7		2
10	836.080.402	Closed Knob M8 - Din 6335		2
11	874.210.020	Copper washer 1_2		1
12	549.210.200	Blind plug G1/2		1
13	864.080.030	Washer M8 - ISO 7089		6
14	866.080.020	Spring Washer M8 - DIN 127		6
15	804.080.250	Bolt M8 x 25 - ISO 4017		6
16	830.080.080	Self Lock Nut M8 - ISO 10511		2
17	826.080.080	Nut M8 - DIN 934		1
18	818.080.350	Set screw M8x35 - DIN 913		1
	623.246.405	Gearbox complete		

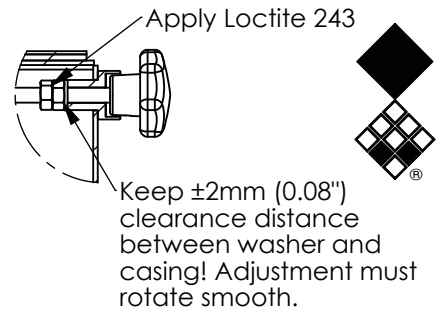
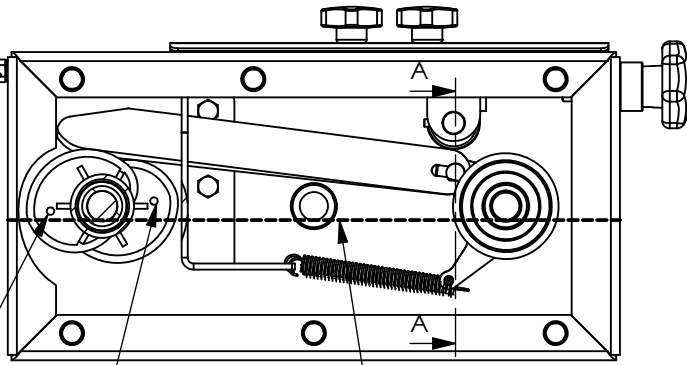


ITEM	PART NUMBER	DESCRIPTION	REMARKS	QUA
1	422.351.382	Shaft		1
2	478.019.101	Pivot point		1
3	444.020.500	Washer		1
4	422.242.020	Shaft		1
5	444.200.730	Excenter		2
6	868.032.100	Shim Ø20xØ32x1.0 DIN988	Quantity depending on clearance	
7	406.280.030	Spacer		1
8	464.152.600	Swing arm		2
9	418.060.190	Pin		2
10	575.010.800	Spring		2
11	868.042.100	Shim Ø30xØ42x1.0 DIN988	Quantity depending on clearance	
12	711.200.120	Bearing 6004		1
13	711.300.132	Bearing 6006		1
14	721.060.080	Bearing HK0608		2
15	470.041.980	Slider bracket		1
16	713.150.110	Bearing 6202-LLU		2
17	414.150.550	Shaft		1
18	406.150.132	Bush		1
19	406.150.020	Bush		2
20	818.050.120	Set screw M5 x 12 - DIN 913		2
21	470.041.190	Guide		1
22	852.102.500	Threaded rod M10x250		1
23	826.100.100	Nut M10 - DIN 934		2
24	870.006.070	Circlip d=6 - DIN 471		2
25	804.080.200	Bolt M8 x 20 - ISO 4017		2
26	864.100.030	Washer M10 - ISO 7089		1
27	874.060.240	Lock washer		2
28	836.100.630	Knob M10 with set screw		1

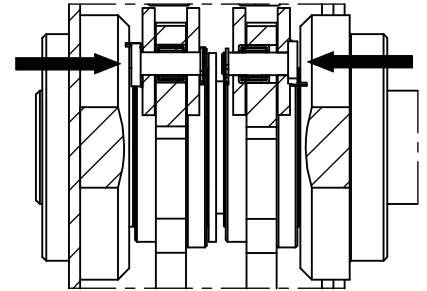


**Timing, Spindle adjustment and Grease level**

Adjust till max. output is 4:1



**SECTION A-A**  
Place pins from correct side and fold lock plate.

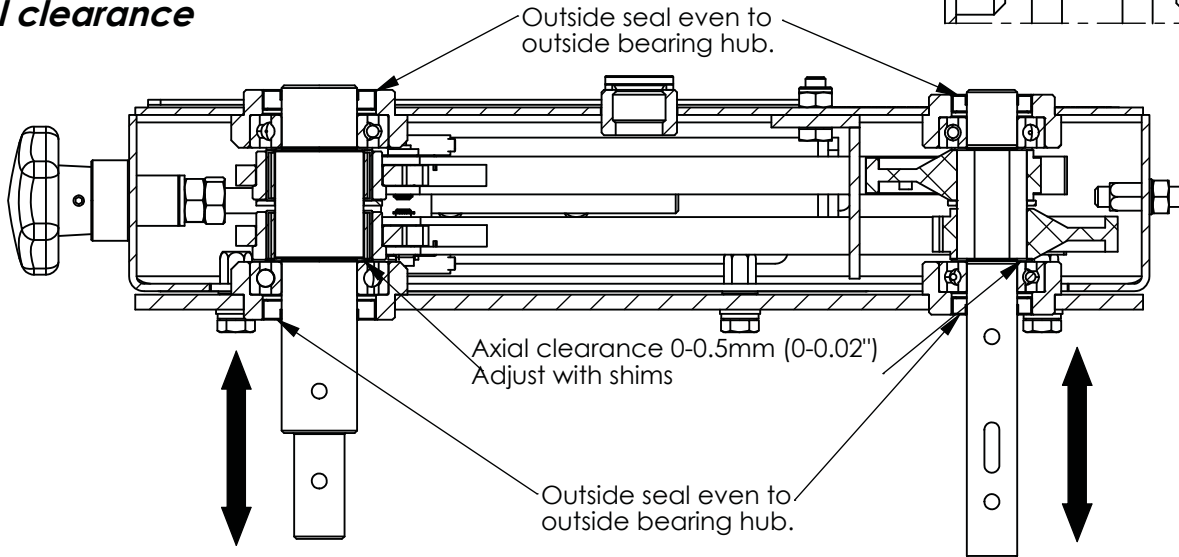


Warning! Make sure the excenters are positioned correct: Fill gearbox with  $\pm 2.8\text{kg}$  (6.17lbs.) EP0 grease  
Fill till level line (Bottom level plug)

- The nodge has to be faced outwards.
- Timing:  $180^\circ$  shifted from each other.

If not correctly installed a shocked rotation will occur at the output shaft.

**Axial clearance**



**Sealing plan**

1. Place sealing paste (Loctite 5970) on gearbox housing as shown in the pictures below. When the guide (1) is removed also apply sealant to the bolts.
2. Place gearbox lid on gearbox housing.
3. Fill bolt holes with silicone sealing before mounting the bolts of the gearbox lid.
4. Make sure to clean the edges of excess sealant.

